



ORDER EARLY. EARN BIG.

WE'RE THAT KIND OF SEED COMPANY.



Order early using our farm-friendly, flexible financing and earn Promise+ points for stuff you want!



PROMISE+ REWARDS

YOUR EARLY ORDER. OUR THANKS. IT'S THAT SIMPLE.

When you commit to order seed before December 15, we'll thank you for putting your trust in us with Promise+ Points redeemable for valuable merchandise.

EASY AS 1-2-3:

- 1** Sign an early order commitment by December 15, 2021.
- 2** Pick your payment method:
 - 0% financing with your local bank plus a financing rebate
 - Cash, including a cash discount based on payment date
 - John Deere Financing
- 3** Bask in our gratitude! Earn Promise+ points based on your commitment level.



View the
Promise+ Points
level your order
will earn you.
Use your phone's
camera to scan the
QR code.

EARN BONUS POINTS

Loyalty Bonus: earn an extra Promise+ point when you commit at level 3 or higher AND plant 100% of your corn and soybean acres with us.

Tier Jumper: earn bonus point(s) with a year-over-year commitment level increase. Earn one point for each tier you jump (maximum of 5 points) over your historic-high level.

ORDER DEADLINE	FINANCING REBATE
September 15, 2021	3%
Sept 16 - Nov 15, 2021	2%
Nov 16 - Dec 15, 2021	1%

MILWAUKEE® TOOL SET

SET INCLUDES:

- 2735-20 - LED work light
- 2853-20 - 1/4in hex impact driver
- 2821-20 - Sawzall reciprocating saw
- 2730-20 - 6 1/2in circular saw
- 2804-20 - 1/2in hammer drill/driver
- M18 & M12 Multi-voltage charger
- 2 - M18 Redlithium XC5.0 batteries

1
POINT
ITEMS

WEBER® PROPANE GRILL



- Genesis II S-335 model
- 3 burner - 39,000 BTU/hour Input
- Sear zone
- Side burner



DYNA-GLO® FORCED AIR HEATER

- Kerosene forced air heater
- 400,000 BTU
- Comfort control thermostat
- LED temperature display
- Auto overheat shut-off device
- Shutdown protection system
- 12in solid wheels



TRAEGER® PELLET GRILL



- Innonwood 650® model
- WiFIRE® technology
- Ironwood® D2 Direct Drive
- TurboTemp®
- Double side-wall insulation
- Pellet sensor



PETERSON FARMS SEED | HOWA™ 1500 RIFLE

LIMITED
QUANTITY

- .308 Caliber, 22" threaded and capped barrel
- Hogue® pillar-bedded overmolded stock & recoil pad
- Sub MOA accuracy guaranteed
- Gray Cerakote barrel & action
- Includes Diamond 4-16 x 44 Scope
- Lifetime warranty



TORO® MOWER



- 30" wide mowing deck
- 2 point height-of-cut
- Dual Force™ cutting system
- Personal Pace® with traction assist



YAMAHA® GENERATOR



- EF2400iSHC model
- Maximum AC output of 2400 watts
- 12-volt DC output
- Battery charging cables included



POLARIS® XT PRO LODGE BY OTTER®



- Otter® fish house for Polaris® Ranger
- 26.5 sq. ft. (67 L x 59.5 W x 78.5 H)
- Spacious enough for 2 people
- Otter Thermal-Tec
- Cover included
- Front entry door with dual coil zippers
- Insulated corners for complete coverage



TRENCH WHEELS FROM RUST SALES, INC.



Drain problem areas with your choice of either:

Convex steel wheels

- Create deep, narrow trenches
- For ATVs and light UTVs

- OR -

Pneumatic wheels

- Provide greater floatation
- For heavier UTVs

Videos at: trenchwheels.com

JOHN DEERE® TOOL CHEST



Top Half:

- H-G model
- 6 drawers
- Gas struts lid support
- 600lb total drawer load capacity



Bottom Half:

- AC-4624CH-G model
- 10 drawers
- 24.6" cabinet depth for longer tools
- Dual drawer slides on deep drawers
- 1200lb total drawer load capacity



2
POINT
ITEMS

BERETTA® SPORTING GUN



- 12 gauge
- A400 Xcel model
- Clay pigeon sporting gun
- Blue anodized engraved receiver

LIMITED
QUANTITY

FLOE® CARGO UTILITY TRAILER



- Cargo Max 8-57 model
- Net Weight: 290lbs

- Bed Size: 97" L x 54" W x 12-13.5" H
- Tires: 12", 5.30-C
- Cargo Weight: 1800lbs



DJI® DRONE KIT + TRAINING



- DJI™ Mavic 2 Pro w/case
- 20 MP Hasselblad camera
- 4K 10-bit HDR
- Up to 35 minutes flight time
- Apple iPad 128GB, Wi-Fi + Cellular
- Includes group training at PFS with Nolan Berg

HOPPER WALKER® FROM RUST SALES, INC.



- Dual motor 12VDC remote control swing hopper mover
- 2 remote controls and grip tires for uneven ground
- For more product specifications: www.hopperwalker.com

BANKS® HUNTING BLIND



*Metal stand not included

- Stump 4 Vision Series model
- Whitetail Properties Pro Hunter edition

Comes completely assembled and includes:

1 captain's chair, 1 stump chair, storage shelf, wall insulation, floor mat, bow hanger, camo curtains, bi-pod and anchor kit.



3
POINT
ITEMS

POLARIS® YOUTH ATV

Outlaw
Model



OR

Sportsman
Model



Your choice of ATV:

- 2 Wheel drive
- 4-stroke single cylinder
- 112cc

Both ATVs Include:

- Safety flag
- Adjustable speed limit
- 1 Color-matched youth helmet



PRIMO® UTILITY TRAILER



- UT82x12-LP model
- Net Payload: 2365lbs
- Bed Size: 82" x 144"

- Tires: 15" ST205/75R15 LRC radial tires
- 3500lb torsion axle (rated 2990#)

PERTEN® MOISTURE TESTER



- AM Farm 5200 model
- Superior accuracy
- Moisture & specific weight measurements
- 10-second analysis
- Touch screen operation

Perten
a BuckleUp company

4

POINT
ITEMS

TORO® ZERO TURN LAWN MOWER

- 54" Titan® MyRIDE® zero turn model
- MyRIDE® suspension system
- 26 horsepower Kohler® PRO
- 54" IronForged™ deck

TORO



KÄRCHER FLOOR SWEEPER

- KM 75/40 model
- Self-propelled
- Travels up to 2.8 mph
- AGM batteries
- Separate shelf charging system
- On-board filter to control dust



KÄRCHER

KÄRCHER HOT WATER PRESSURE WASHER



- 3.5 gpm @ 3000 psi
- 220v 1ph power
- Diesel/Kerosene fueled burner
- Auto start/stop feature
- 200' reel & 100' hose included
- High pressure soap line

KÄRCHER

3 YEAR LEASE REWARD

NEW FORD® F-150



Crew Cab 302A Package Includes:

- 10 way power heated front seats
- SYNC 3 with 8" touchscreen
- Sirius Satellite free for 6 months
- Power adjustable pedals
- Rear under seat storage
- Keyless entry pad
- Fordpass Connect for Auto Start app on smartphone

3 Year Lease
15,000 miles per year

**Requires a 5 point commitment for 3 consecutive years.*

Luther Family
Ford

5

POINT
ITEMS

KÄRCHER FLOOR SCRUBBER

- B 40 W model
- Self-propelled/Walk-behind (Roller)
- Travels up to 2.8 mph
- 10.6 gallon clean/dirty water capacity

KÄRCHER



POLARIS® SPORTSMAN 450 H.O.EPS



- 450 electronic power steering
- ProStar 500cc, 4-stroke SOHC single cylinder
- 33 horsepower
- True on-demand AWD/2WD

POLARIS
Think Outside

PJ® TILT TRAILER



- T6 model
- Net Payload: 10,580lbs
- Bed Size: 22' L x 82" W x 21" H
- Tires: 16", 235/80/R16 radial tires
- Hydraulic cushioned gravity tilt
- (2) 7,000lb Dexter Torflex torsion axle

CAN-AM® OUTLANDER 650 ATV

- 650 model
- 62 horsepower
- Tri-mode dynamic power steering
- Rotax 649.6cc V-twin, liquid cooled engine



can-am

6
POINT
ITEMS

SNO-WAY® PLOW



SNO-WAY
SNOW & ICE CONTROL EQUIPMENT

- 26 Series 2, straight plow
- Designed for 1/2 ton trucks
- 7' 6" welded steel blade
- Wireless remote to control plow and lights
- Patented Down Pressure® hydraulics system
- Patented Shock-Killer™ trip return system protects your equipment
- Easy to use, super fast drive-in mount

SD DRAIN® TILE OR SD DRAIN® DITCH SYSTEM FROM RUST SALES, INC



OR



- Plugs into your existing RTK GPS and newer tractor hydraulics
- Designs tile runs and controls plow for proper tile placement
- Optional slope sensor and external valve not included

- Plugs into your existing RTK GPS and newer tractor hydraulics
- Designs ditches and controls scrapers to make water flow
- Optional external valve not included

More information at www.sddrain.com

SEA-DOO SPARK® JET SKI



- Rotax® 900 ACE™ engine
- 90 horsepower
- 2up-seating capacity
- Electronic iBR®
- Includes trailer

SEA-DOO

SKI-DOO® RENEGADE SPORT SNOWMOBILE



- Rotax 600 EFI
- pDrive with slider shoes QRS
- SC-5M rear suspension
- RAS 3 front suspension

ski-doo

3 YEAR LEASE REWARD

BOBCAT® SKID STEER LOADER



- S64 T4 model
- 68.0 HP V2 Bobcat engine
- 74" heavy duty bucket
- Deluxe package
- Enclosed cab with HVAC

3 Year Lease
*Requires a 6 point commitment for 3 consecutive years.

Bobcat

UNI TUBE® FIELD LOADER

- 1537 model
- 7500 BpH
- Low clearance hopper
- Collapsible canvas hopper
- Electrical or hydraulic top drive
- 15" 2-ply chevron belt



Uni-Tube
by Universal Industries, Inc.

7
POINT
ITEMS

SNO-WAY® PLOW



SNO-WAY
SNOW & ICE CONTROL EQUIPMENT

- 29VHD Series 2, V Wing snow plow
- Designed for 3/4 and 1 ton trucks
- 9' 6" blade

- Wireless remote to control plow and lights
- Patented Down Pressure® hydraulics system
- MaxADJUST™ leveling system

3 YEAR LEASE REWARD

BOBCAT® SKID STEER LOADER

7
POINT
ITEMS

- T66 T4 model
- 74.0 HP V2 Bobcat engine
- 15.7" C-pattern rubber track
- 74" heavy duty bucket
- Deluxe package
- Enclosed cab with HVAC

3 Year Lease

*Requires a 7 point commitment for 3 consecutive years.



VITA SPAS® HOT TUB



- ENVIE 500 series
- Seating for 5-6 people
- 54 powerful jets



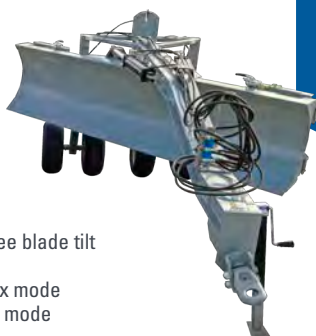
PERTEN® INFRAMATIC GRAIN ANALYZER



- IM 8800 NIR model
- Tests grain for moisture, protein and oil
- GPS to create protein maps of your fields
- Touch screen operation



B.I.L.® CENTER PIVOT BLADE

8
POINT
ITEMS

- CP1232 model
- 12' Blade
- 45 degree blade angle and 15 degree blade tilt
- Dual oscillating wheels
- Manually fold doors forward for box mode
- Manually fold doors back for blade mode

FUEL TRAILER



- Thunder Creek FST990 model
- 25 gpm pump
- 990 gallons
- 35' hose reel
- 7 guage tank
- Modular design



POLARIS® RANGER 1000 PREMIUM® EPS



- 3-person capacity
- 61 horsepower
- 1000 electronic power steering model
- 4-stroke twin cylinder engine
- AWD/2WD/VersaTrac mode



JOHN DEERE® SUB-COMPACT UTILITY TRACTOR

- 1025R model
- Powerful tier 4-compliant diesel engine
- 4WD power steering
- Hydrostatic transmission with Twin Touch™ foot controls
- Loader bucket included



9
POINT
ITEMS

MERIDIAN® HOPPER BIN



- GrainMax 3000 model
- Holds 3000 bushels
- Skid
- 3 site glasses
- Manway & 1808 aeration



PJ® FLATDECK TRAILER



- Gross weight: 25,000lbs
- 32' L x 102" W x 33" H
- (8) Tires: 16", 235/80/R16 radial
- 5' dove tail with flip over monster ramps (pictured above)
- (2) 12,000lb Dexter axles

MERIDIAN® SEED TENDER

- Seed Express 240 Basic model
- 240 units
- 6" x 19' conveyor
- Bumper hitch



10
POINT
ITEMS

POLARIS® RANGER 1000 XP® NORTHSTAR



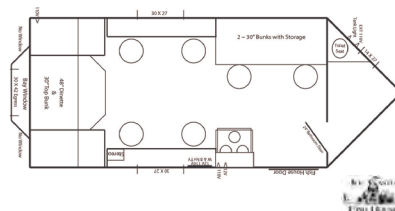
- 3-person capacity
- 82 horsepower
- 4-stroke twin cylinder DOHC
- AWD/2WD/VersaTrac turf mode
- Full cab system including heat/AC, winch and more!



ICE CASTLE® LIMITED



- 8' X 16'
- Air conditioner
- 6 fishing holes with lights
- Rear dinette with lift bed above
- Cedar interior
- Stove/Oven



MERIDIAN® HOPPER BIN



- GrainMax 4000 model
- Holds 4000 bushels
- Skid
- 3 site glasses
- Manway & 2408 aeration



JOHN DEERE® GATOR - FULLY LOADED

11

POINT
ITEMS

- 835R model
- 54 horsepower
- Crossover utility vehicle
- 3-person cockpit
- Fully enclosed cab for a quiet ride
- HVAC system
- Power steering



UNI-TUBE® FIELD LOADER

UniTube®
By Universal Industries, Inc.

- 1547 model
- Collapsible canvas hopper
- 10" diameter tubes
- 15" 2-ply chevron belt
- 26.5 HP Kohler field injected gas engine and hydraulic cooling package

POLARIS® RANGER 1000XP CREW
NORTHSTAR PREMIUM

12

POINT
ITEMS

- 6-person capacity, Premium Edition
- 82 horsepower
- High performance on-demand true AWD/2WD/VersaTrac turf mode
- 4-stroke twin cylinder DOHC
- Full cab system including heat/AC, winch and more!



POLARIS® GENERAL XP-4 DELUXE



- 4-person capacity
- 100 horsepower
- ProStar 1000 4-stroke twin cylinder DOHC
- On-demand true AWD/2WD/VersaTrac turf mode
- Ride Command package



AMERICAN WHIRLPOOL® POWERPOOL

13

POINT
ITEM

- MB4 model
- Dimensions: 168" x 90" x 50"
- Seating for 9 people
- 27 stainless steel jets
- 2 MAAX Force swim jets
- 3.5" underwater light
- LED illuminated swimlane
- Cover included (Steps sold separately)
- Starter chemicals included
- Set-up and delivery included



MERIDIAN® SEED TENDER

14

POINT
ITEM

- Seed Express 375RT model
- 375 units
- 6 function wireless remote
- 8" x 21' conveyor
- Bumper hitch





3104 164th Ave SE • Harwood, ND • PetersonFarmsSeed.com • 866-481-7333