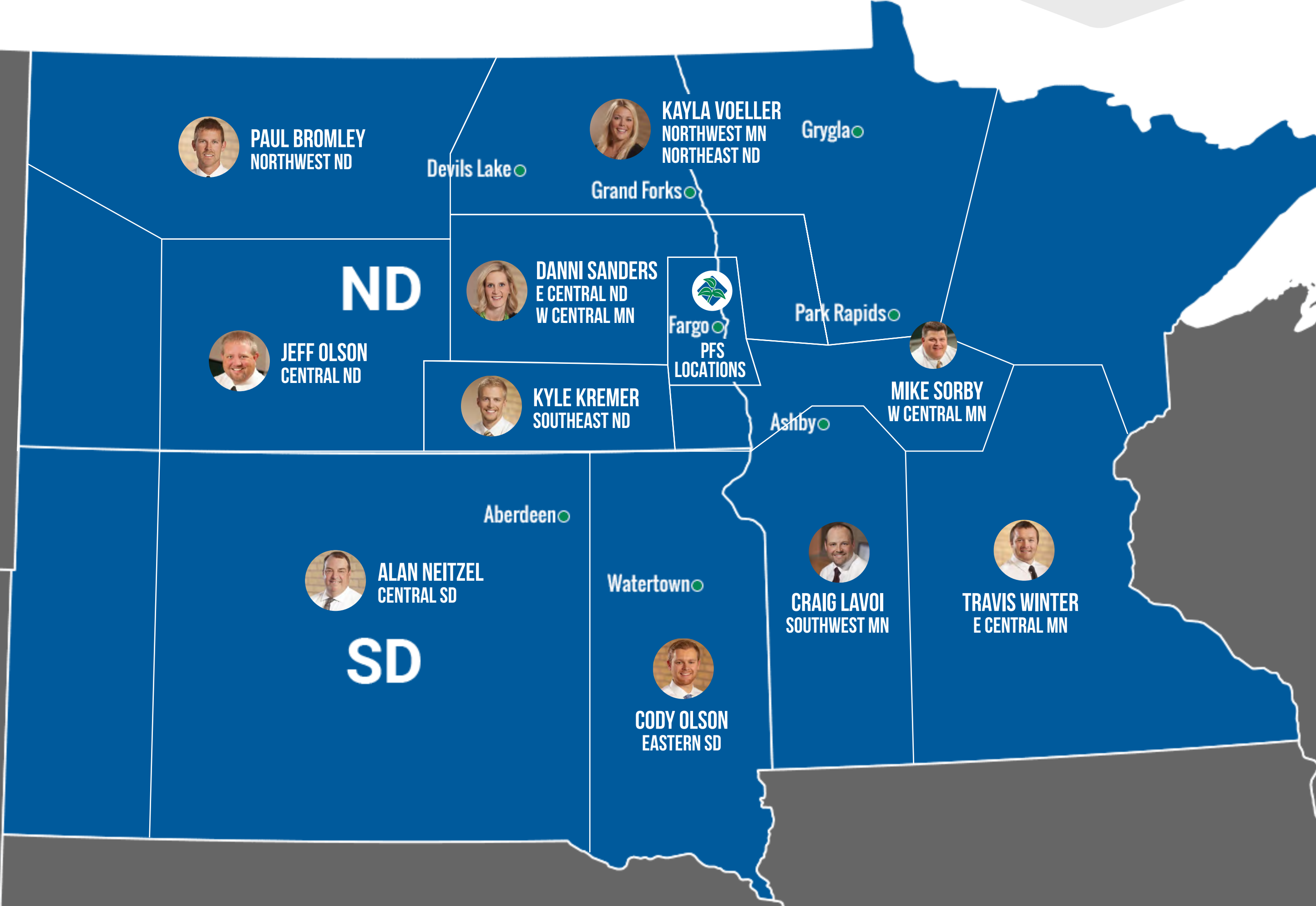


CLICK ON AN AREA OF THE MAP TO SEE GDU INFORMATION FOR THE WEEK OF JUNE 29



WEEK OF JUNE 29, 2021

CODY OLSON EASTERN SD



WEEKLY NOTES

Corn is in V9-V10 and soybeans are close to canopy.

Many places got a half inch to 2 inches of rain, which really made the plants look healthy.

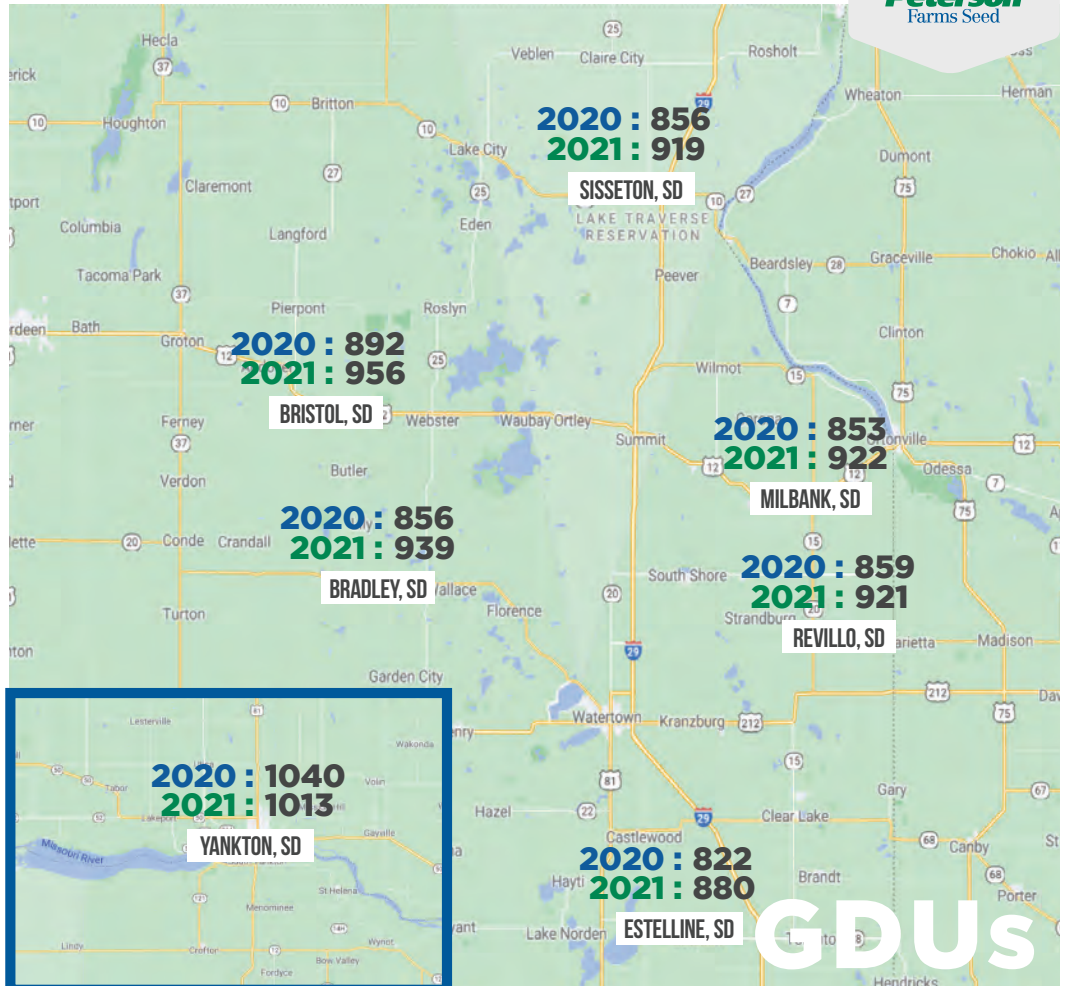
We haven't seen much for bugs yet.



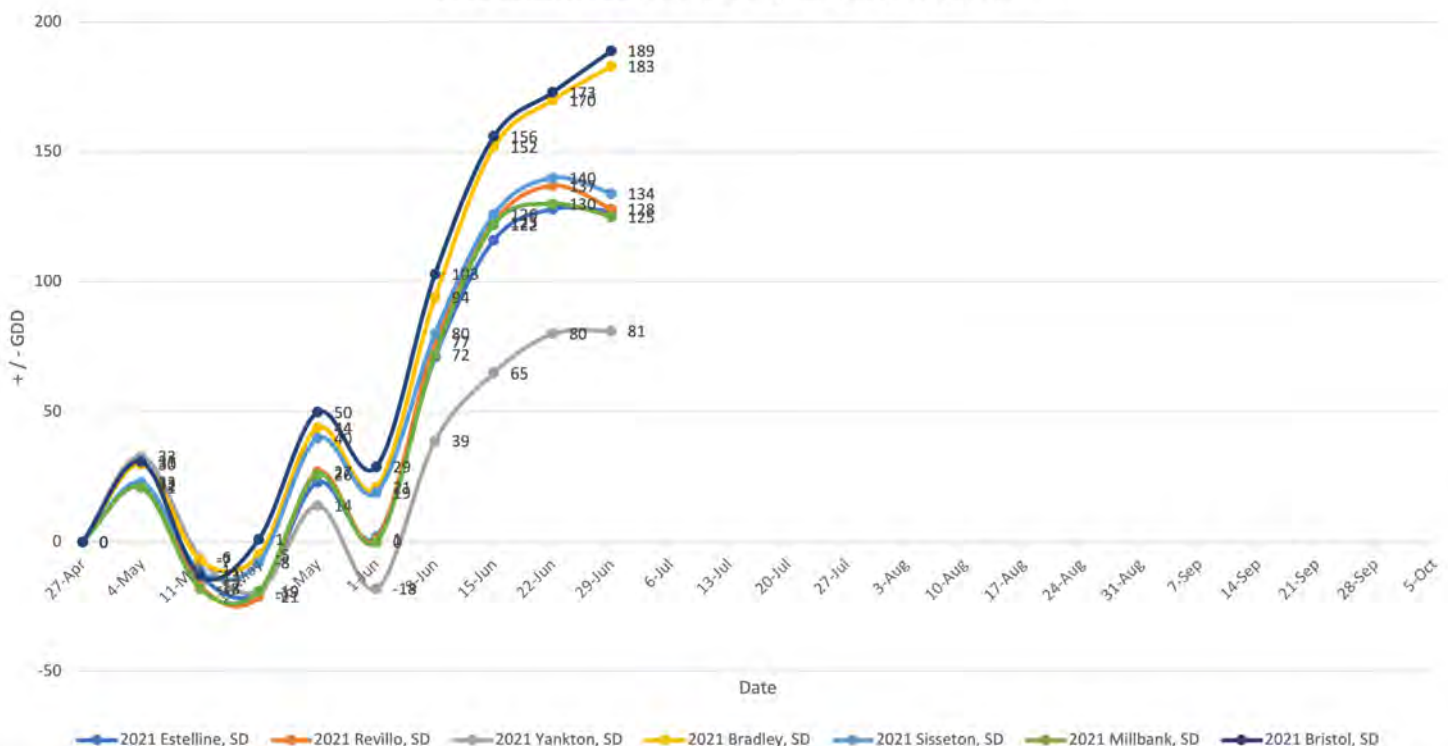
CODY OLSON

605-929-5688

CODYO@PETERSONFARMSSEED.COM



2021 Eastern South Dakota Departure From Normal



WEEK OF JUNE 29, 2021

JEFF OLSON CENTRAL ND



WEEKLY NOTES

Our area's corn shot up about 6 inches overnight it seems!

Soybeans have shown a little progress, but are very slow. The soybeans are starting to flower.

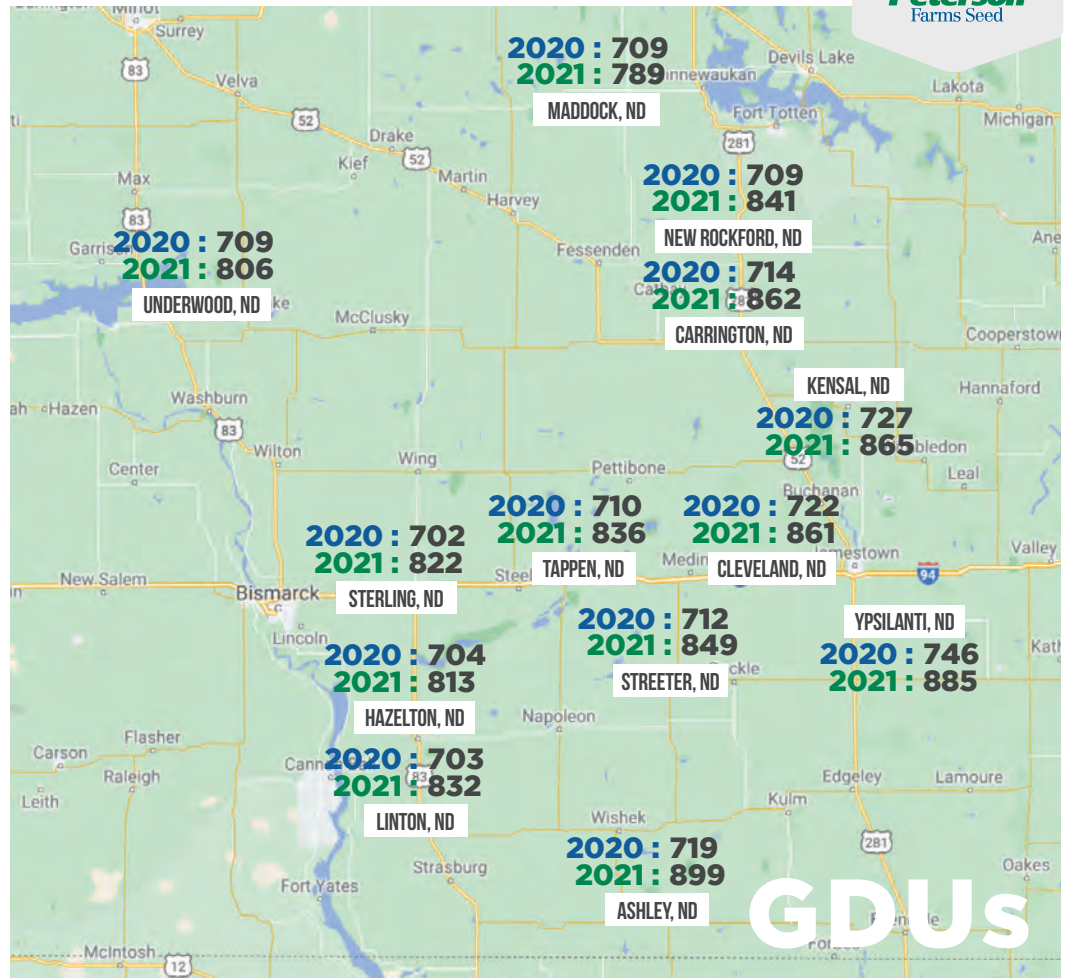
We had spotty showers over the weekend that helped stressed crops.



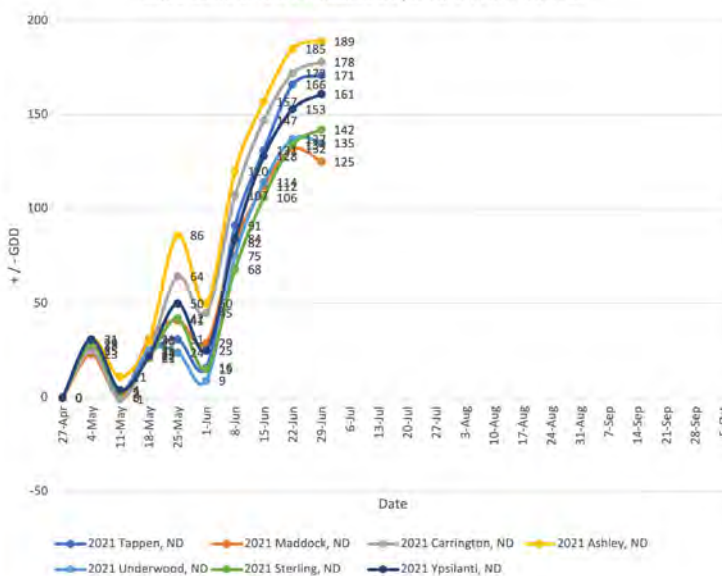
JEFF OLSON

701-659-3246

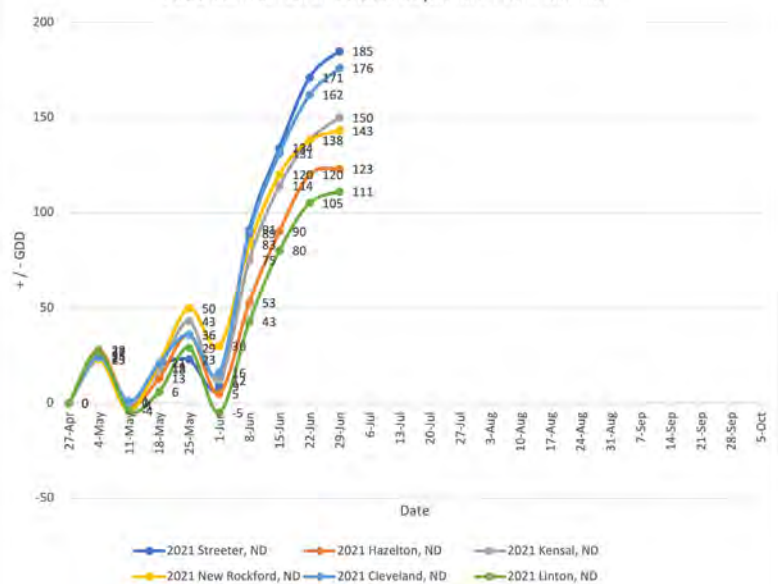
JEFF@PETERSONFARMSSEED.COM



2021 Central North Dakota Departure From Normal



2021 Central North Dakota Departure From Normal



WEEK OF JUNE 29, 2021

MIKE SORBY WEST CENTRAL MN



WEEKLY NOTES

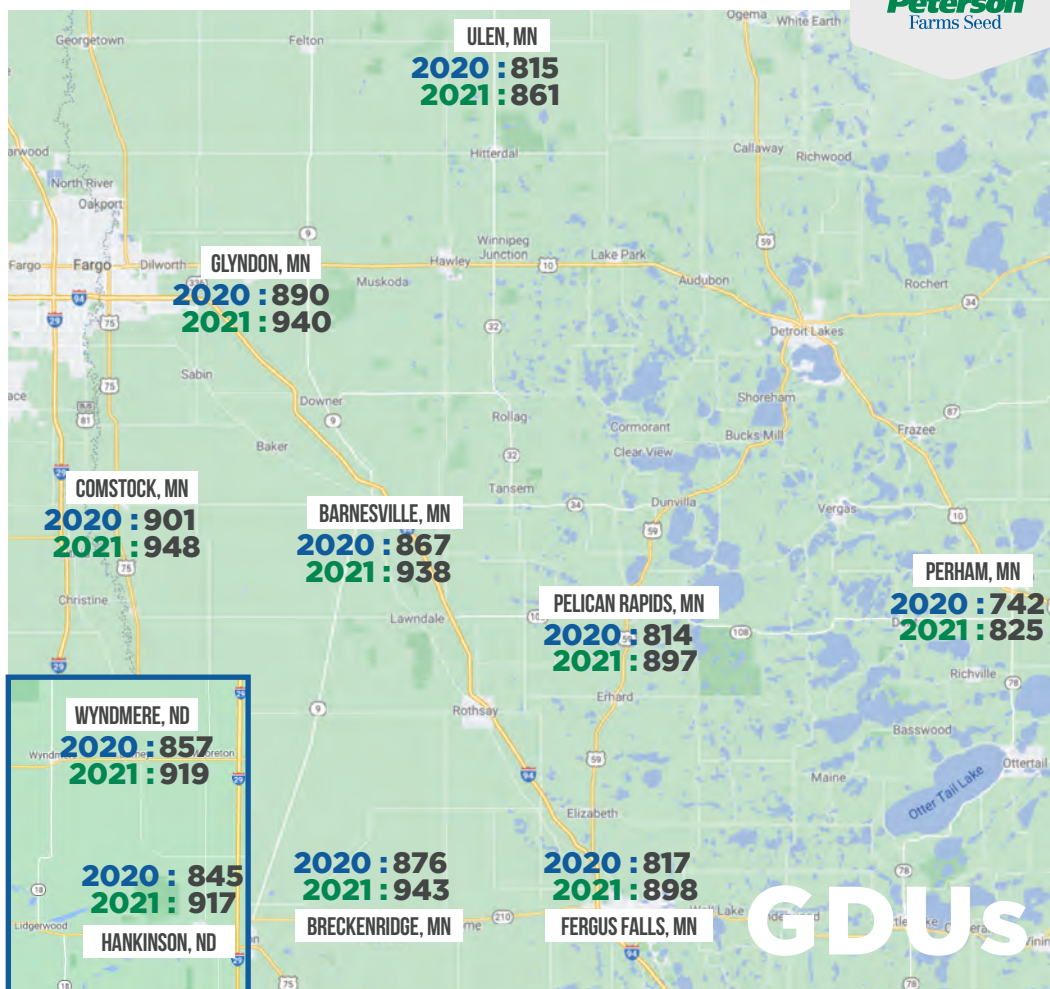
We received .4-.6" of rain over the weekend which was needed!

Both corn and the soybeans are coming along nicely now. But, do have some pretty bad IDC issues in some areas.

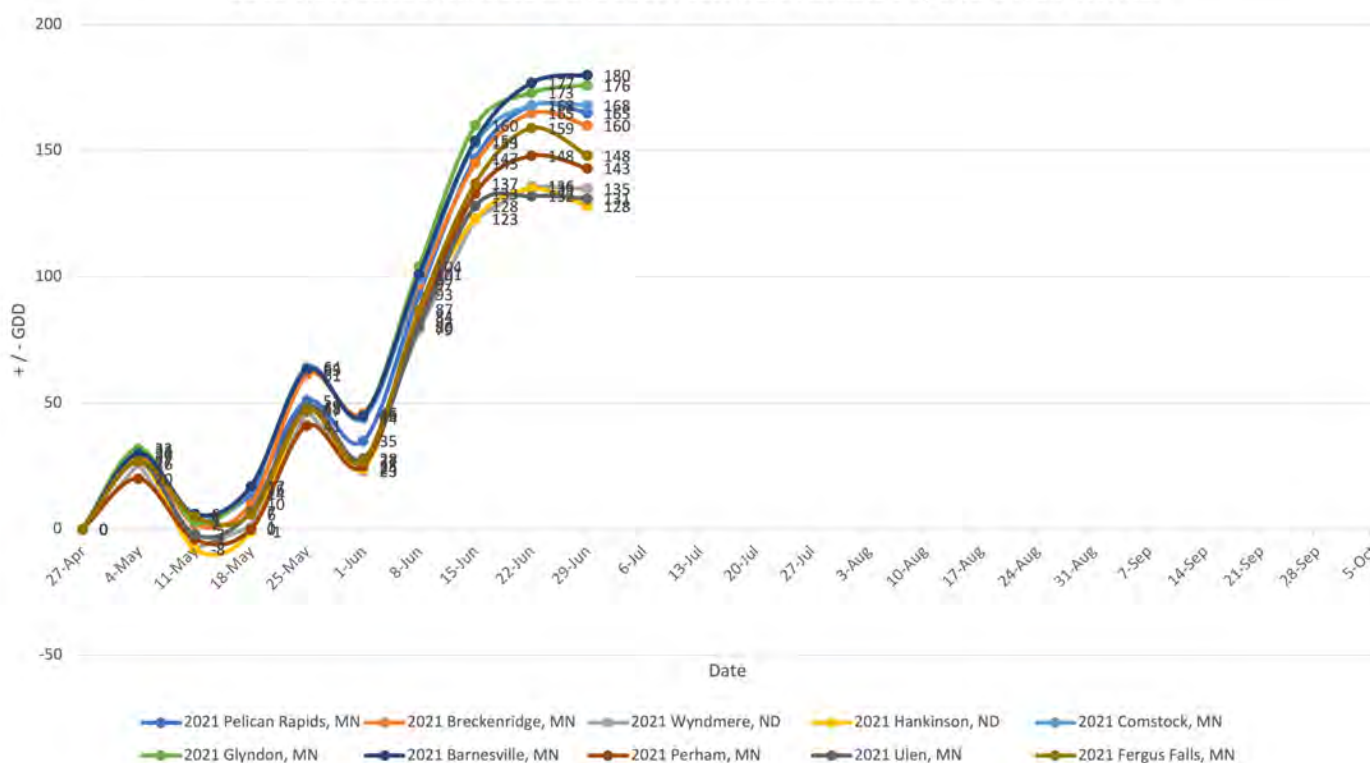


MIKE SORBY

701-238-3914
MIKES@PETERSONFARMSSEED.COM



2021 West Central Minnesota and South East North Dakota Departure From Normal



WEEK OF JUNE 29, 2021

PAUL BROMLEY NORTHWEST ND



WEEKLY NOTES

Grasshoppers are a problem along some field borders. We've also got some bacterial blight showing up. Our early beans are flowering.

Most farmers in my area caught at least 1/2" of rain over the weekend to get us through another week.

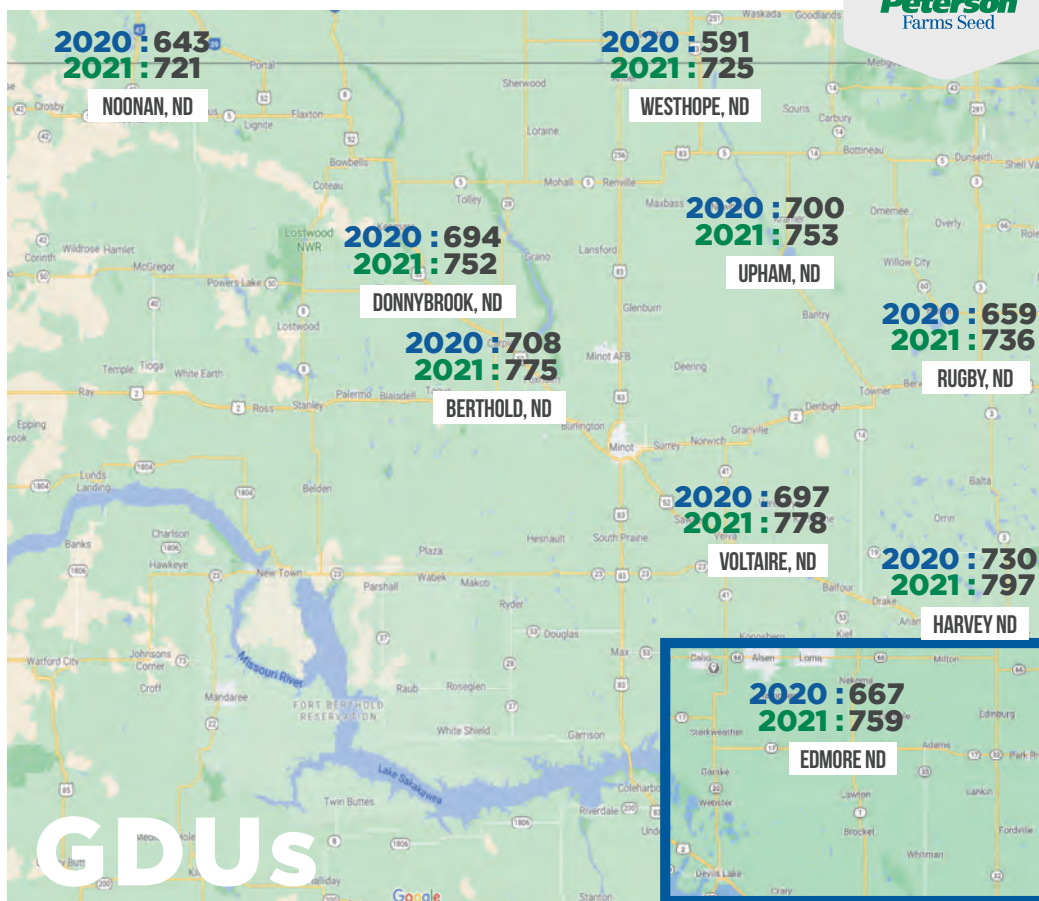
Lots of corn is showing the yellow "rapid growth" on the tops of plants.



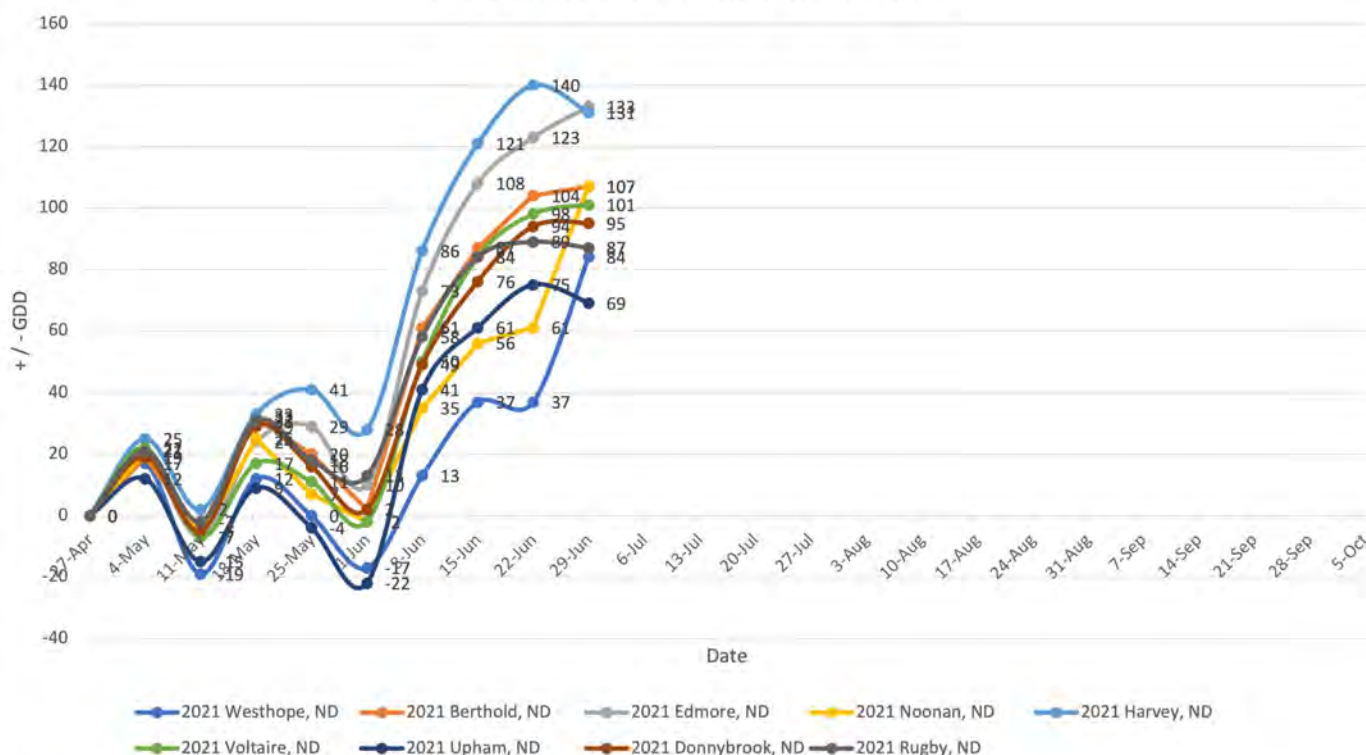
PAUL BROMLEY

701-399-6944

PAUL@PETERSONFARMSSEED.COM



2021 Central and Northwest North Dakota



WEEK OF JUNE 29, 2021

TRAVIS WINTER EAST CENTRAL MN



WEEKLY NOTES

Things are progressing well in my territory. Corn is still looking pretty dry in pockets but hanging on by a thread. We've got very little Goss's Wilt showing up!

My territory received some nice rains over the weekends but it was very spotty.

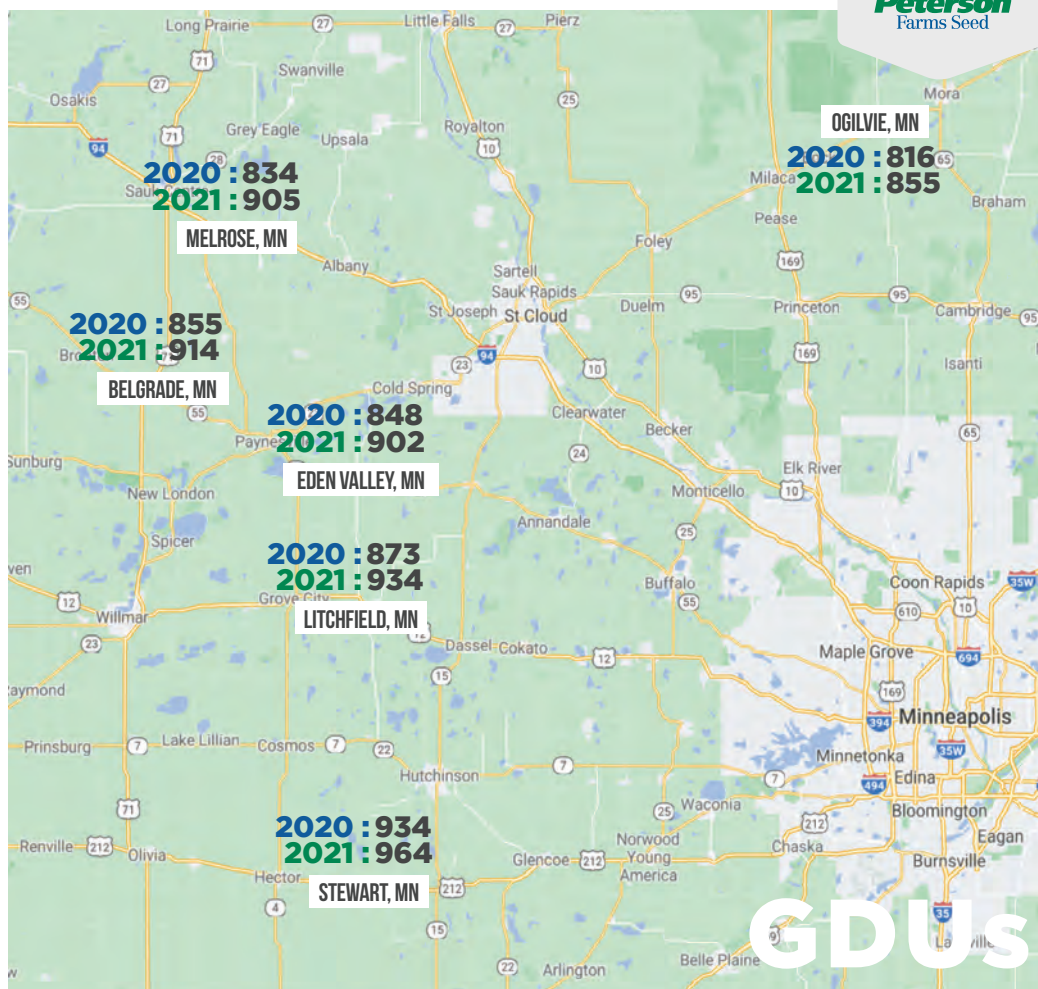
The soybeans are starting to take shape, with larger trifoliates starting to really fill in the rows. They are not showing near as much drought stress as the corn. We've got pockets of IDC, but not many other diseases or insects in the beans. Flowers are showing up all over.



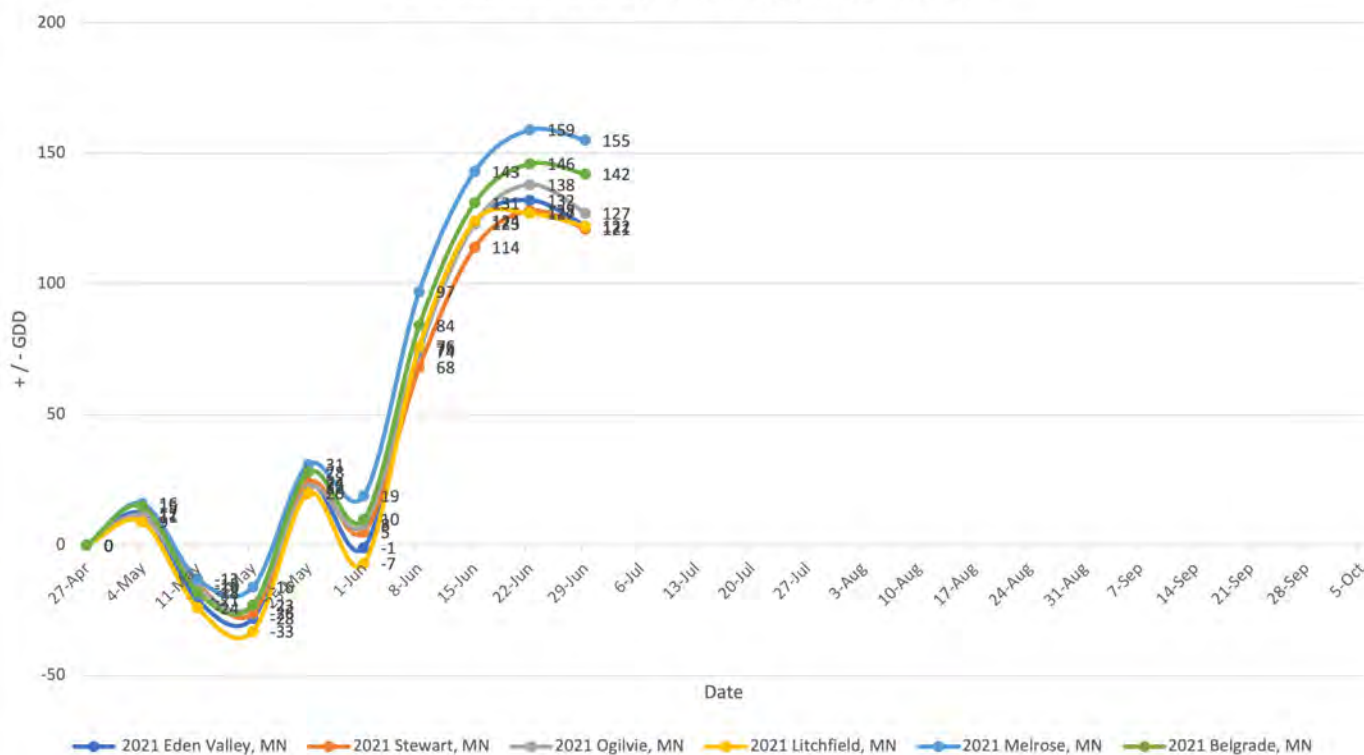
TRAVIS WINTER

320-290-4096

TRAVIS@PETERSONFARMSSEED.COM



2021 Central Minnesota Departure From Normal



WEEK OF JUNE 29, 2021

PFS RETAIL LOCATIONS



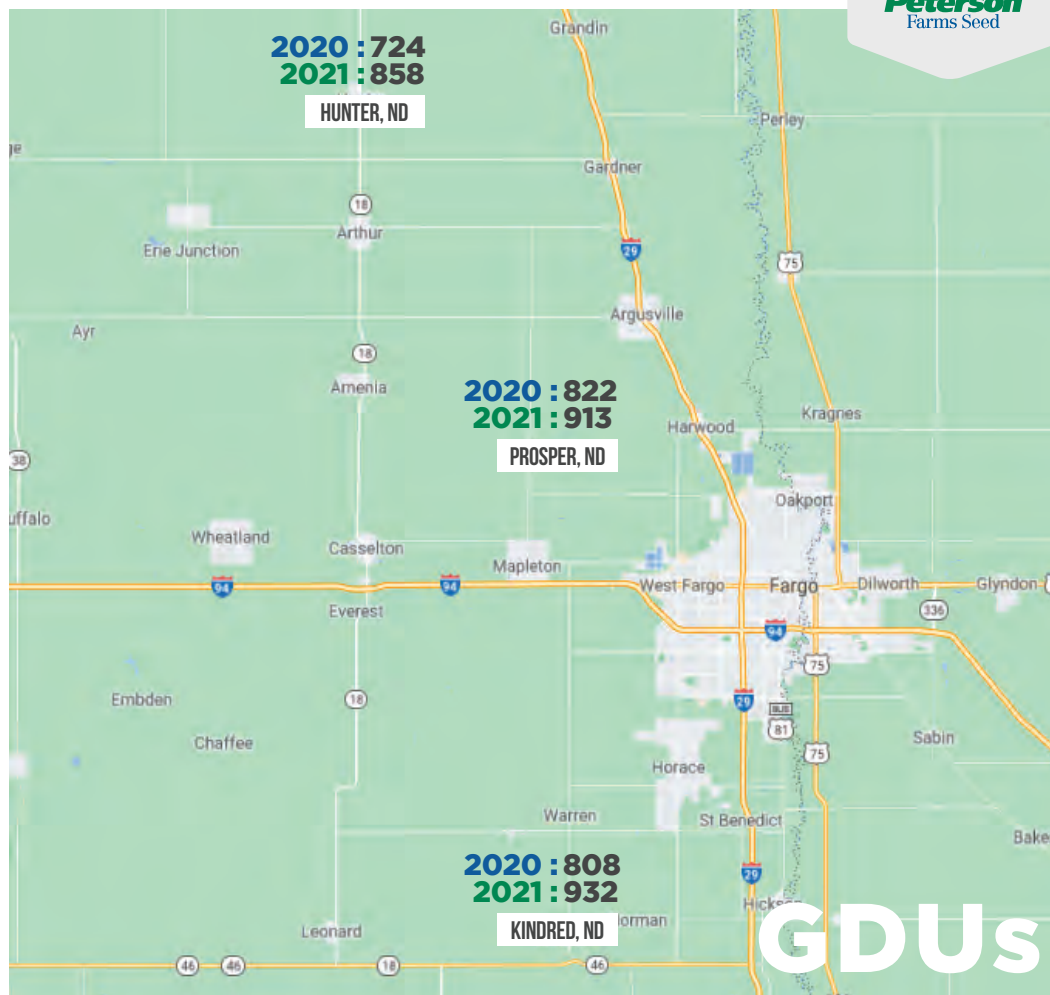
WEEKLY NOTES

Hunter: Things are looking pretty good for most of the area.

Corn is V7-V11 for the most part and nice and dark green - hopefully tapping into moisture for the next couple weeks.

Beans are showing some IDC in the usual bad spots but starting to slowly come out of it and most of them have started flowering. I have seen a few grasshoppers here and there with some edges of fields being sprayed. Overall the beans have really taken off the last couple weeks and are really growing. Another rain next week and we'll hold on to some great potential.

KINDRED: JADE ALBRECHT
TYLOR JOHNSON
PROSPER: MICHAEL SHUTT
DREW RODEN
HUNTER: KAEVIN KYLLO
TROY WIEGANDT
701-282-7476



2021 PFS Locations Departure From Normal

