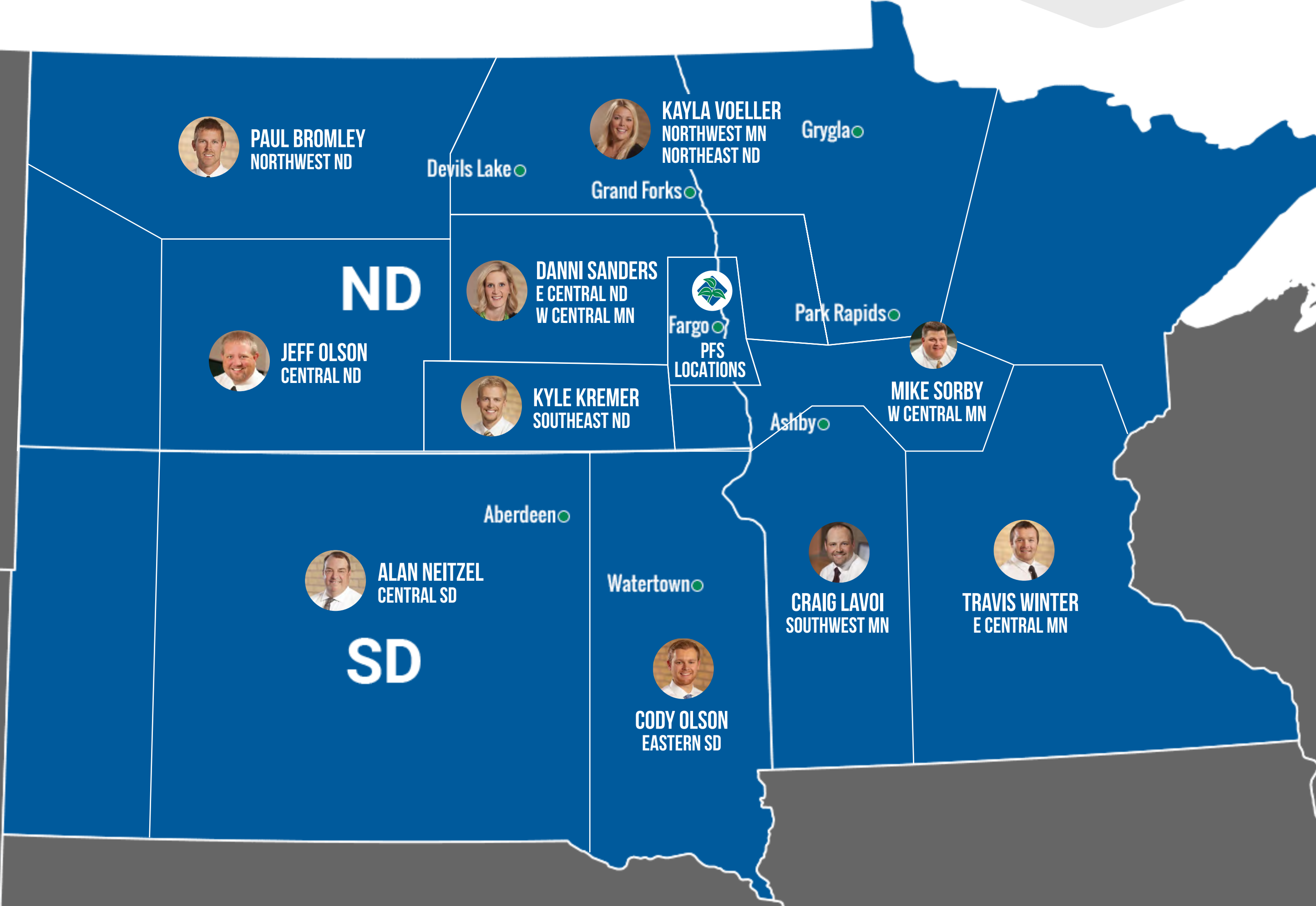


CLICK ON AN AREA OF THE MAP TO SEE GDU INFORMATION FOR THE WEEK OF JULY 13



WEEK OF JULY 13, 2021

DANNI SANDERS

EAST CENTRAL ND
WEST CENTRAL MN



WEEKLY NOTES

After the dry hot days and another dry, hot week ahead, farmers in my area are getting worried and really hurting for rain.

The beans seem to be handling the stress better. Pods are setting in many areas.

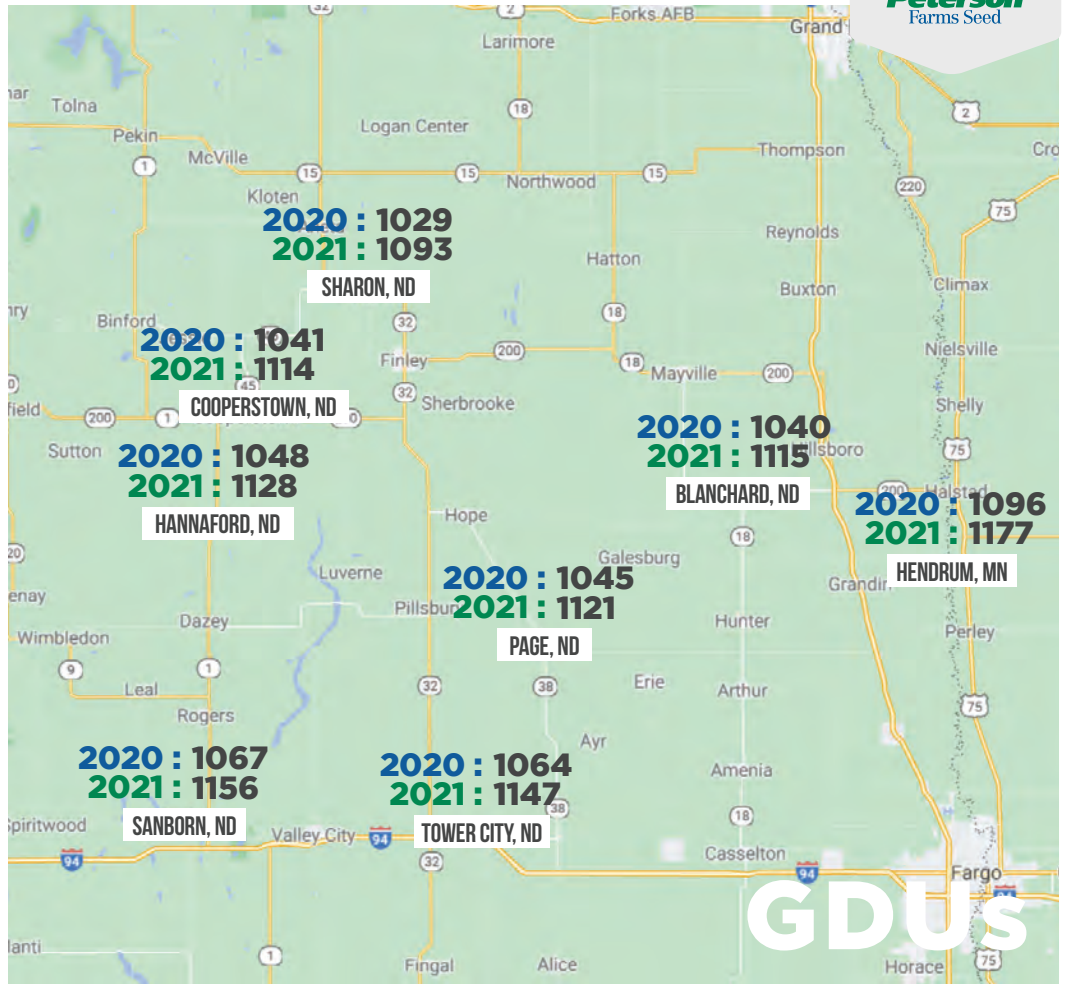
Corn is at a standstill. The areas that caught some rain last week are doing ok but those that didn't are struggling.



DANNI SANDERS

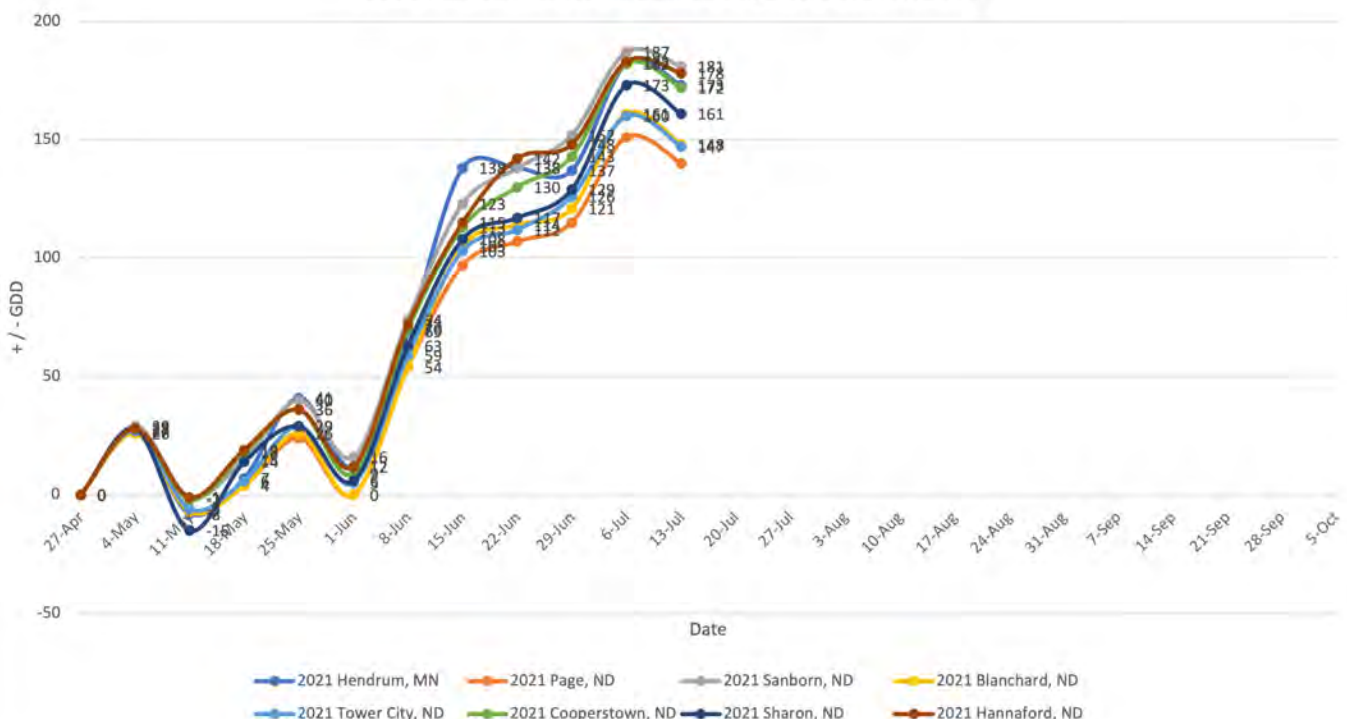
701-371-1712

DANNI@PETERSONFARMSSEED.COM



GDU

2021 East Central North Dakota Departure From Normal



WEEK OF JULY 13, 2021

JEFF OLSON CENTRAL ND



WEEKLY NOTES

Continued heat, continued lack of moisture. There are small areas of the territory that are in ok shape.

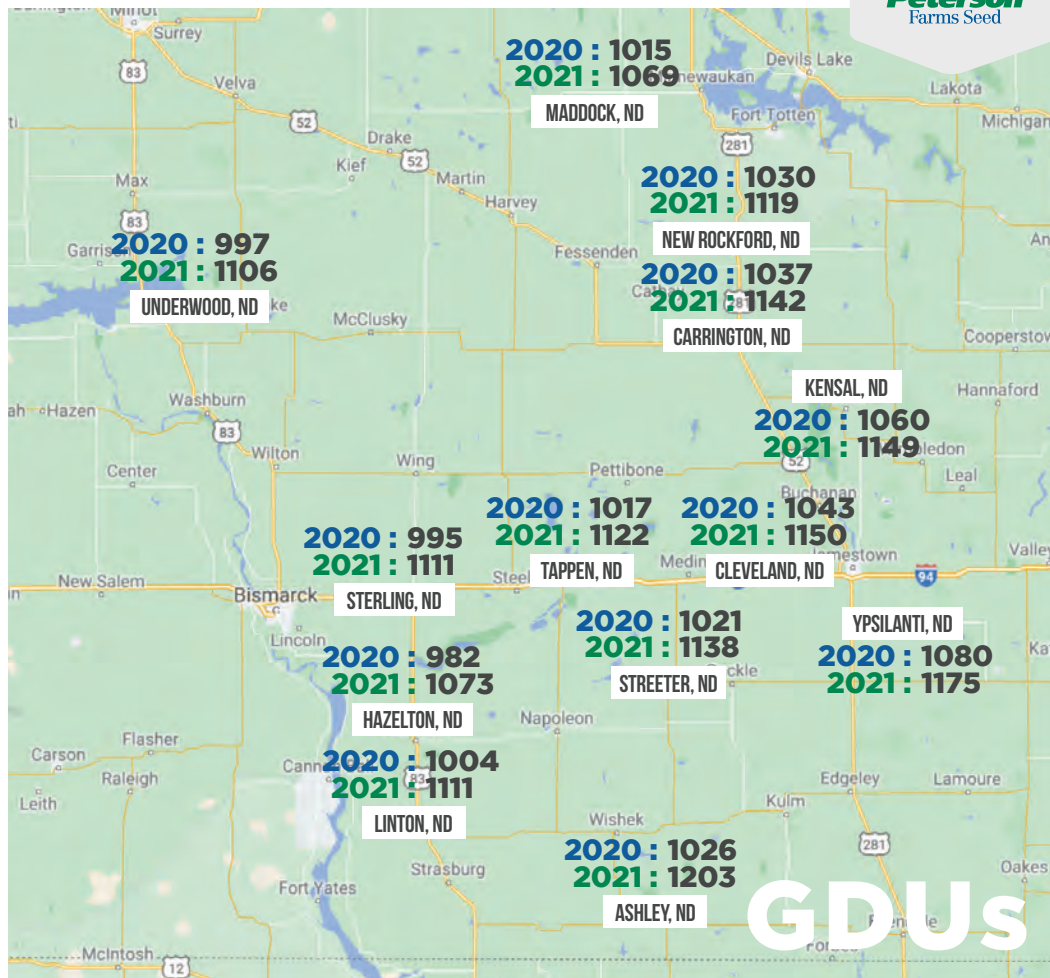
Small grains are turning prematurely, corn is tasseling or very near tassel and beans are mid flower right now.



JEFF OLSON

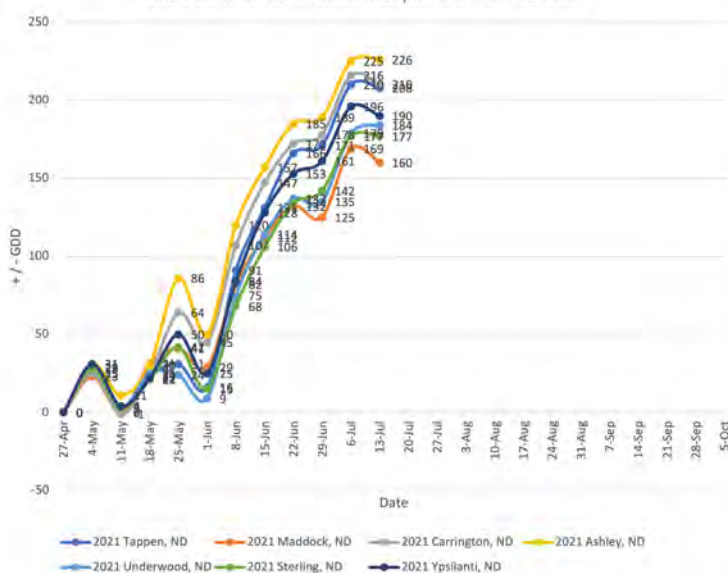
701-659-3246

JEFF@PETERSONFARMSSEED.COM

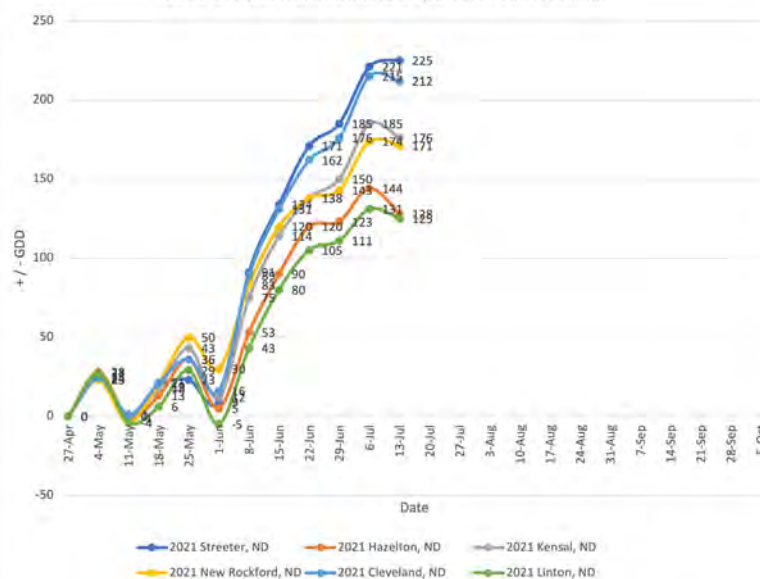


GDDs

2021 Central North Dakota Departure From Normal



2021 Central North Dakota Departure From Normal



WEEK OF JULY 13, 2021

KAYLA VOELLER

NORTHEAST ND
NORTHWEST MN



WEEKLY NOTES

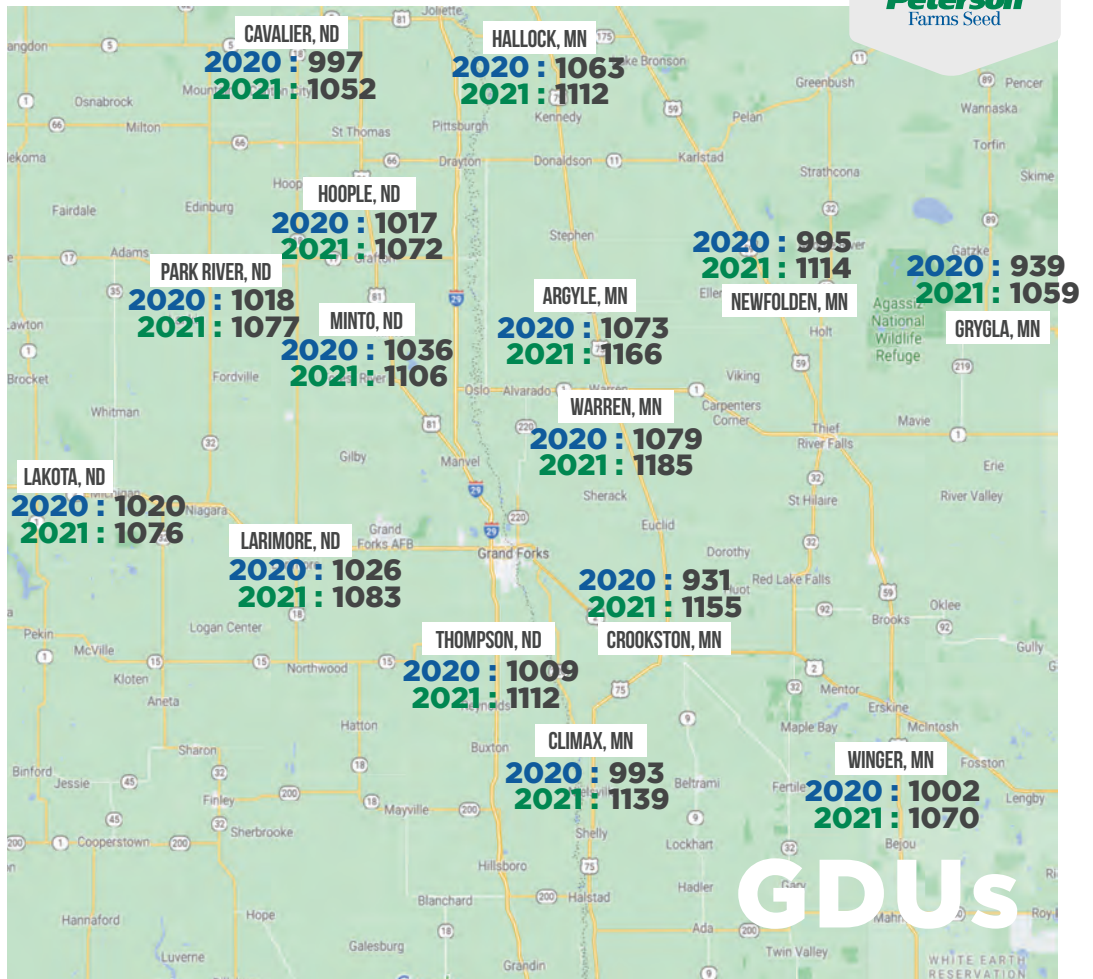
This will be a tough week with no rain in the forecast.

Crops are at a bit of a standstill and it's another round of 'hanging in there'.



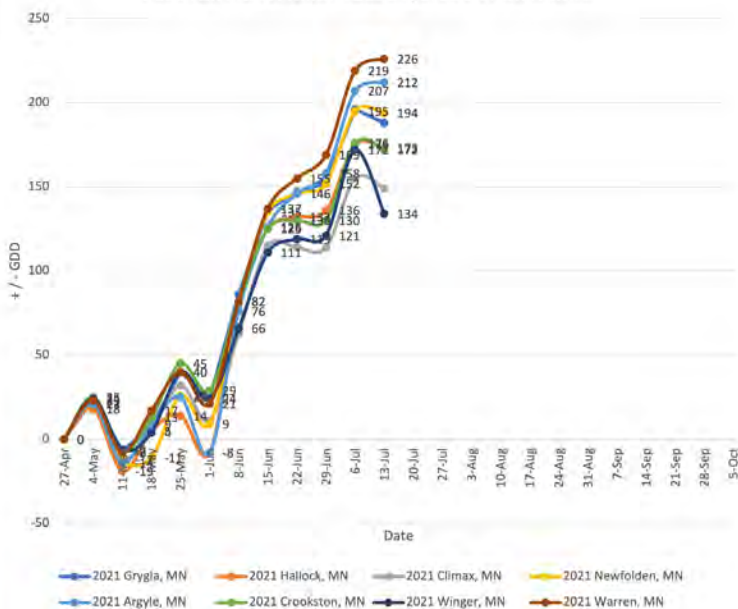
KAYLA
VOELLER

701-430-6820
KAYLA@PETERSONFARMSSEED.COM

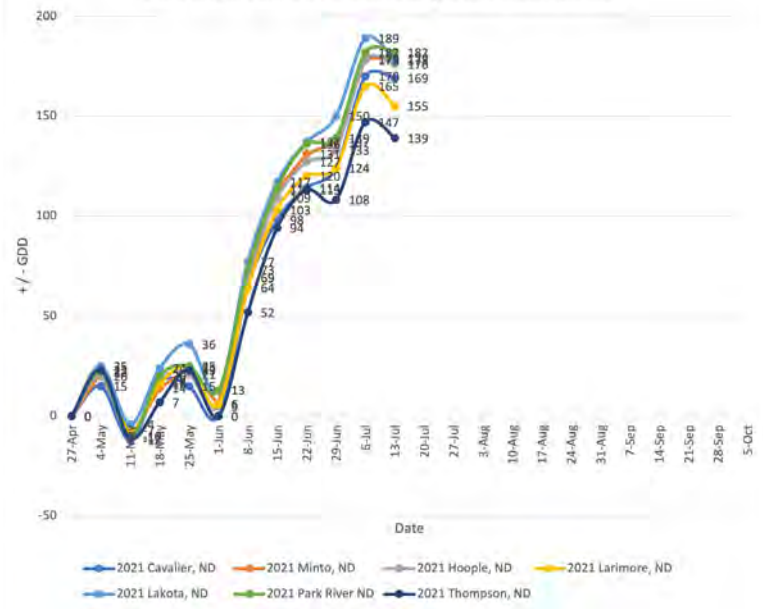


GDU

2021 Northwest Minnesota Departure From Normal



2021 North East North Dakota Departure From Normal



WEEK OF JULY 13, 2021

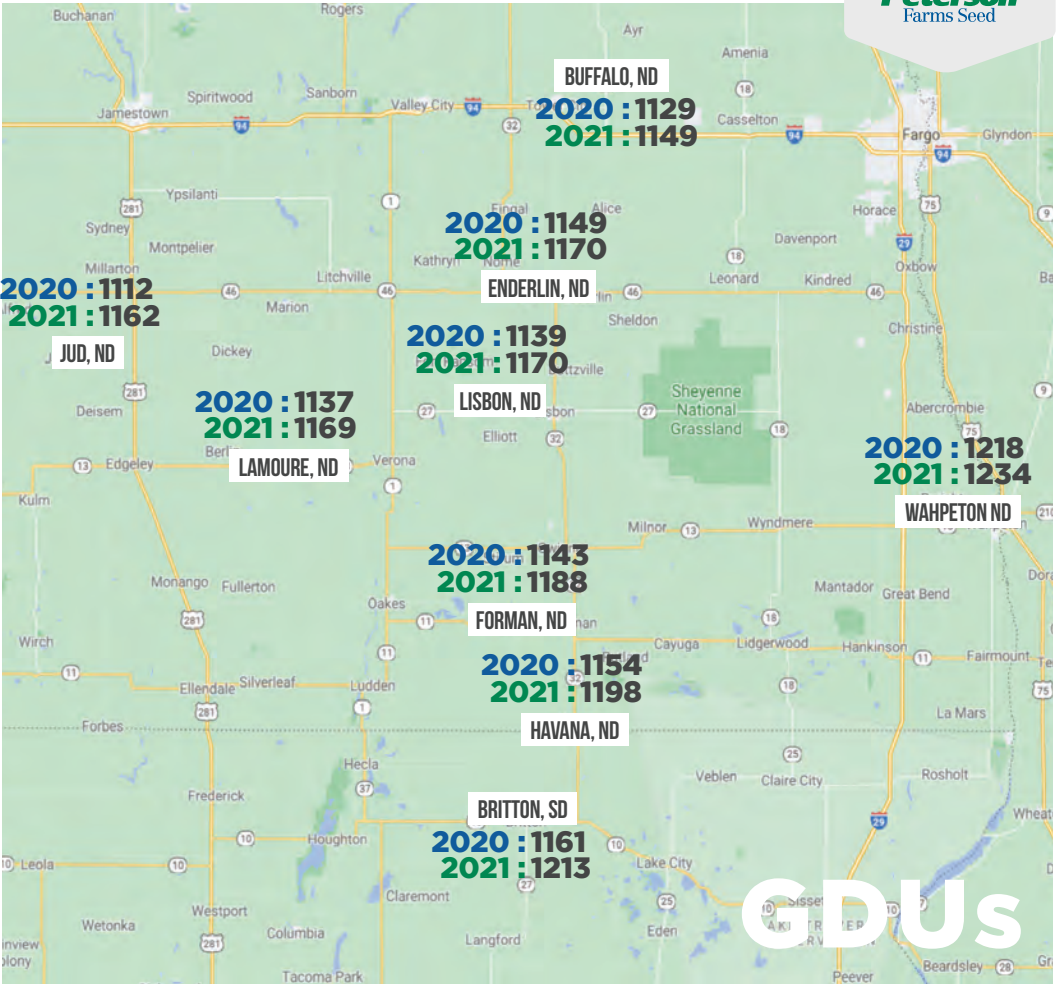
KYLE KREMER SOUTHEAST ND



WEEKLY NOTES

We saw the first tassels show up last weekend.

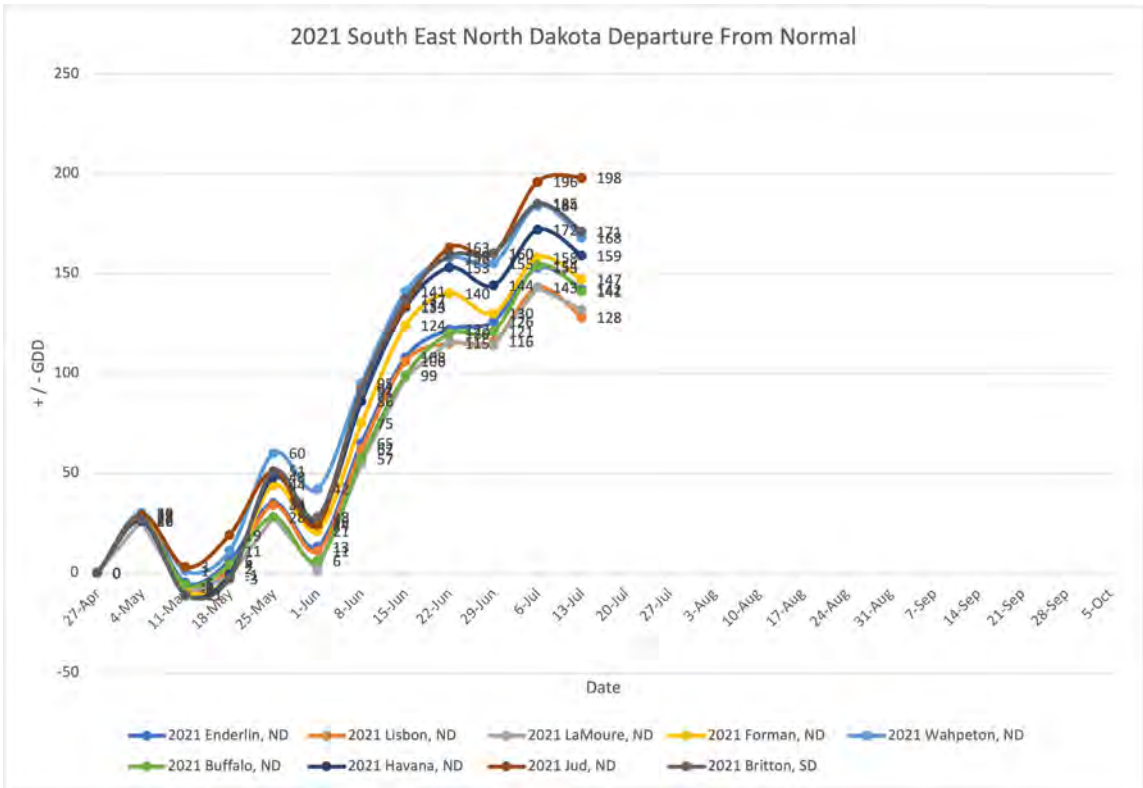
Farmers in the area are seeing some very promising flower clusters on soybeans, which is a good sign. A few pods are starting to show up, also.



KYLE KREMER

701-809-4490

KYLE@PETERSONFARMSSEED.COM



WEEK OF JULY 13, 2021

MIKE SORBY WEST CENTRAL MN



WEEKLY NOTES

Some areas look great and others need rain this week.

Lots of tassel showing and the soybeans range from flowering to 2" long pods.

I've seen a few aphids, so I'm encouraging my farmers to watch out for them and grasshoppers along the edges of fields.

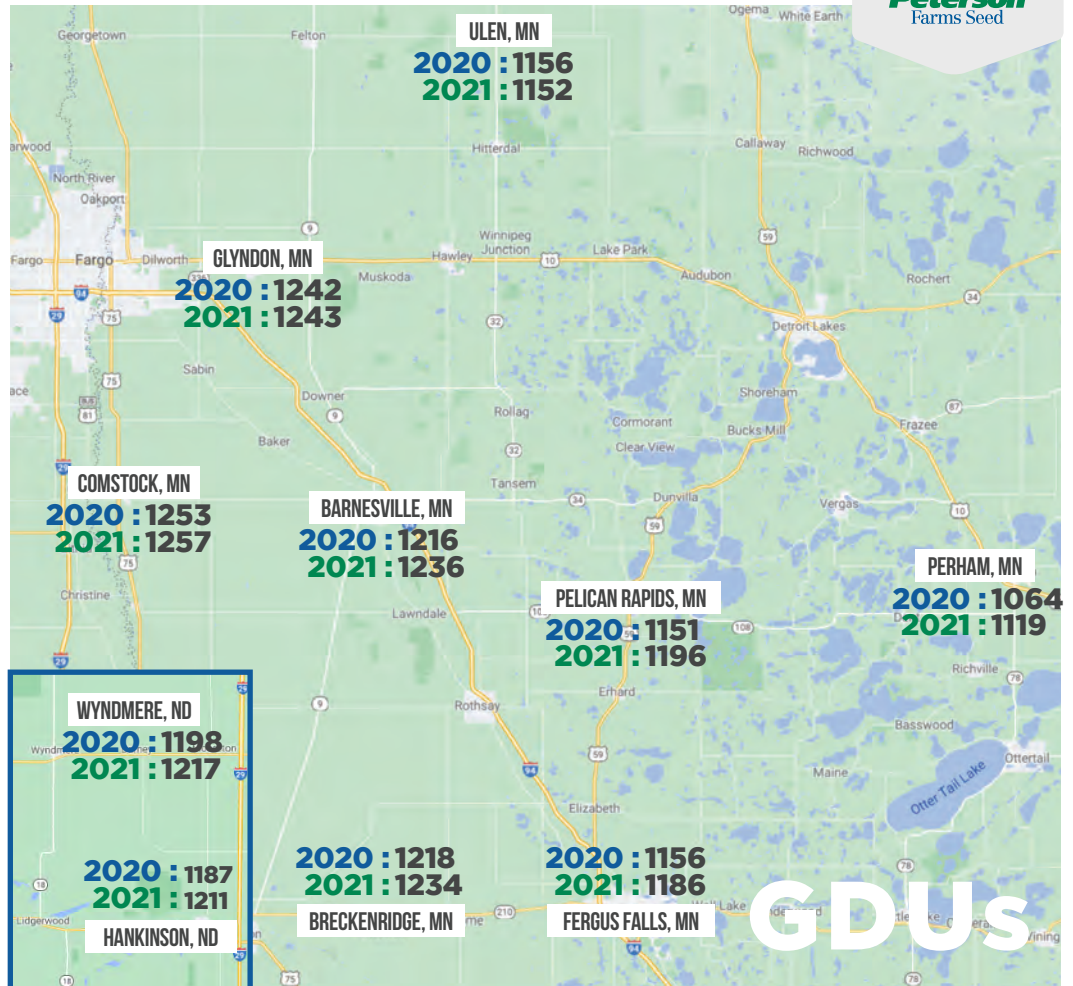
IDC has all but disappeared.



MIKE SORBY

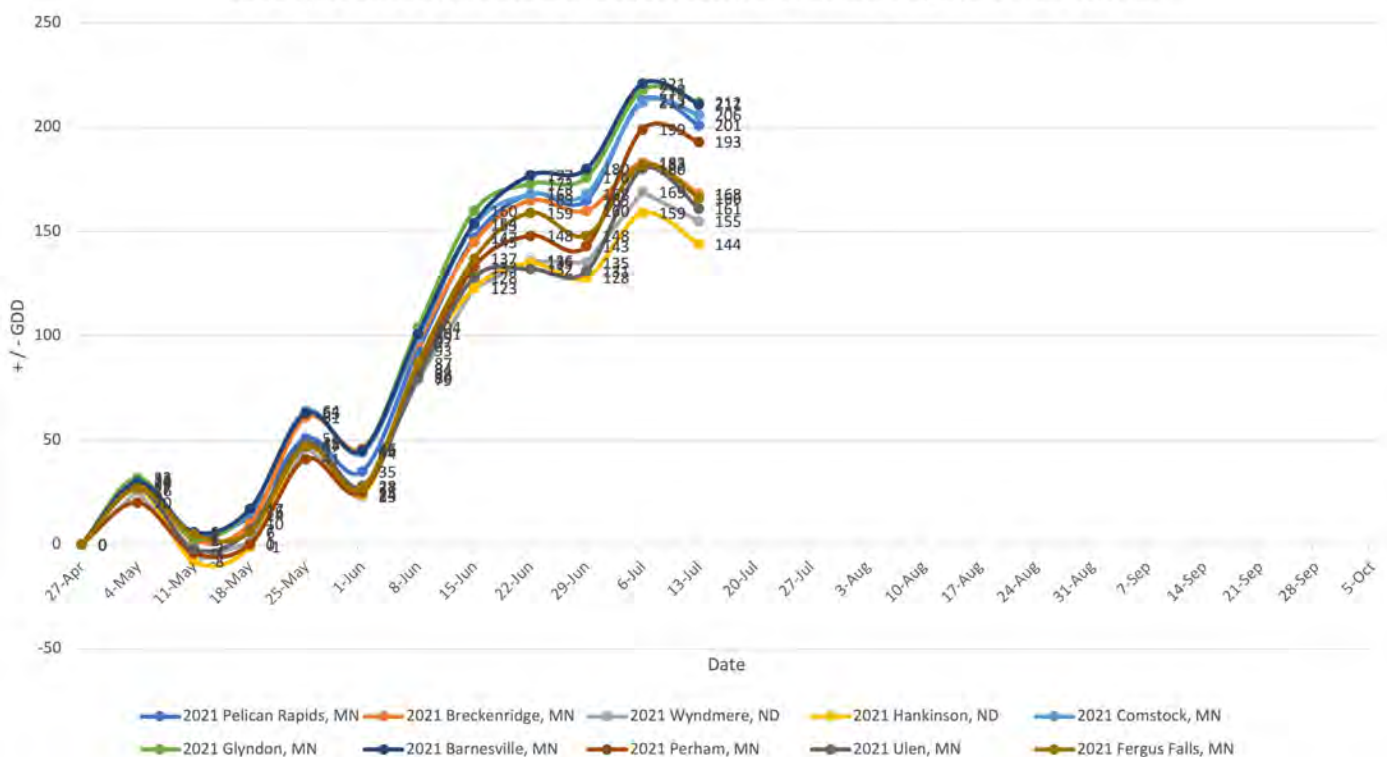
701-238-3914

MIKES@PETERSONFARMSSEED.COM



GDU

2021 West Central Minnesota and South East North Dakota Departure From Normal



WEEK OF JULY 13, 2021

PAUL BROMLEY NORTHWEST ND



WEEKLY NOTES

Crops are holding in suprisingly well considering the lack of moisture.

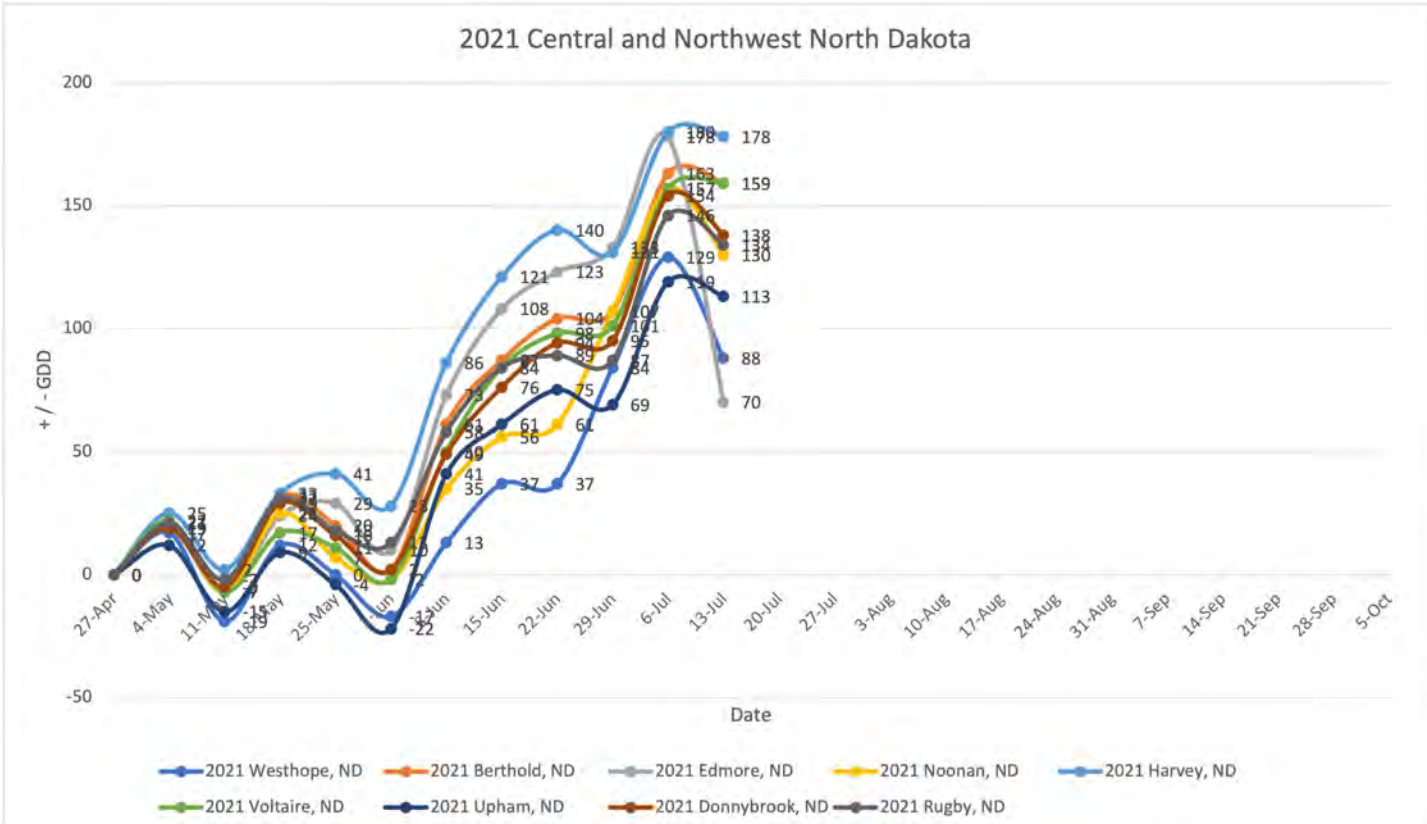
Aphids can be found about anywhere you look. We've seen no tasseling yet but it's getting close.

I've seen some soybeans with 3/16"-3/4" pods.

Aphids can be found about anywhere you look. We've seen no tasseling yet but it's getting close.



701-399-6944
PAUL@PETERSONFARMSSEED.COM



WEEK OF JULY 13, 2021

TRAVIS WINTER EAST CENTRAL MN



WEEKLY NOTES

We are seeing more and more corn shooting tassels. Coming up, it might be the weekend where a few start shedding pollen.

The corn crop seems to be holding pretty well from the shot of rain last week.

Soybeans are really closing the rows quickly. Beans continue to take the lack of moisture better than the corn.

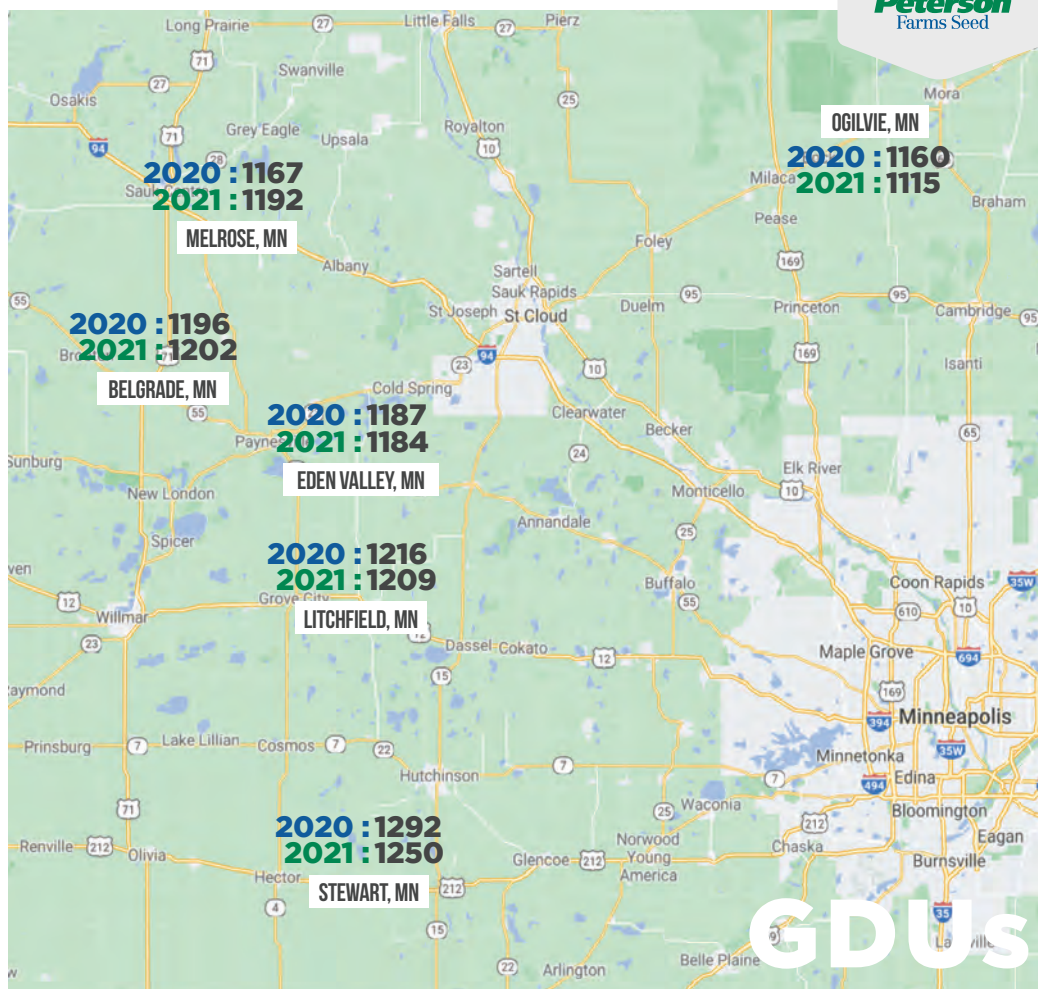
Rain continues to be the talk of the town.



TRAVIS WINTER

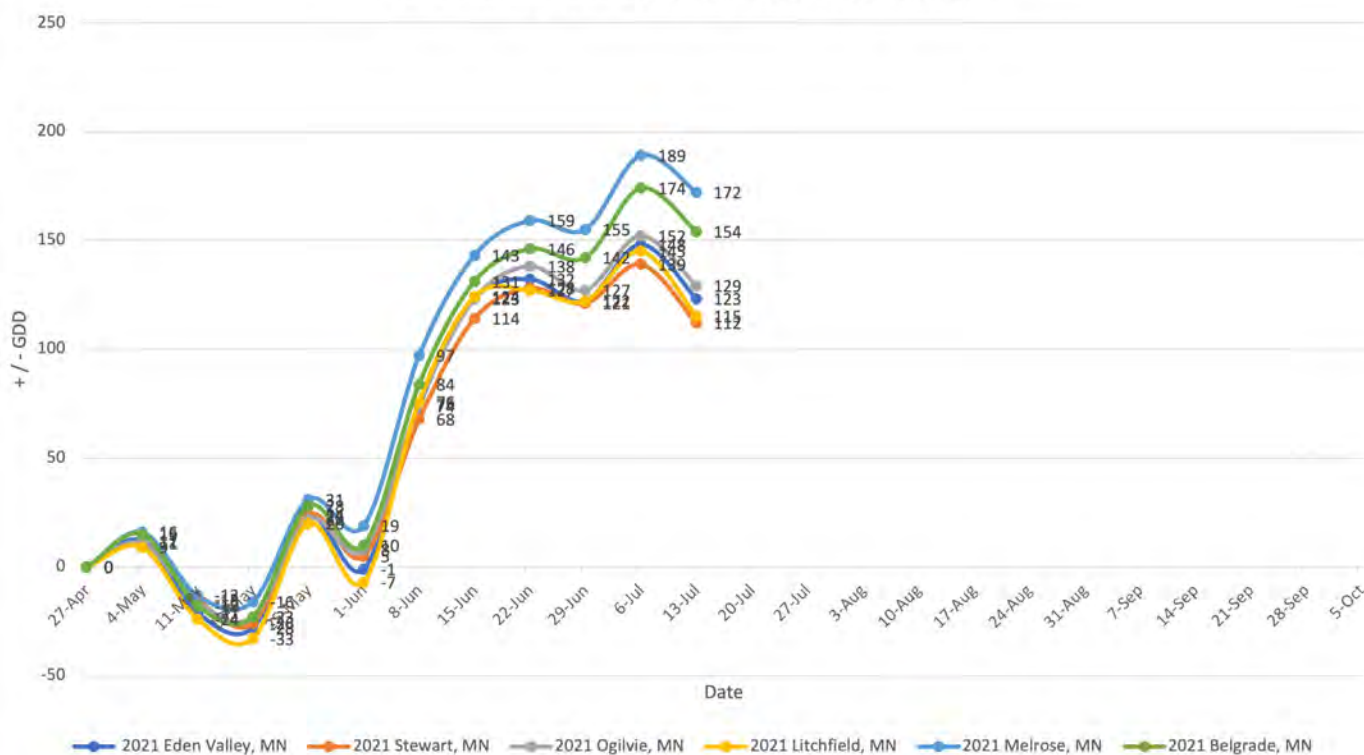
320-290-4096

TRAVIS@PETERSONFARMSSEED.COM



GDU

2021 Central Minnesota Departure From Normal



WEEK OF JULY 13, 2021

PFS RETAIL LOCATIONS

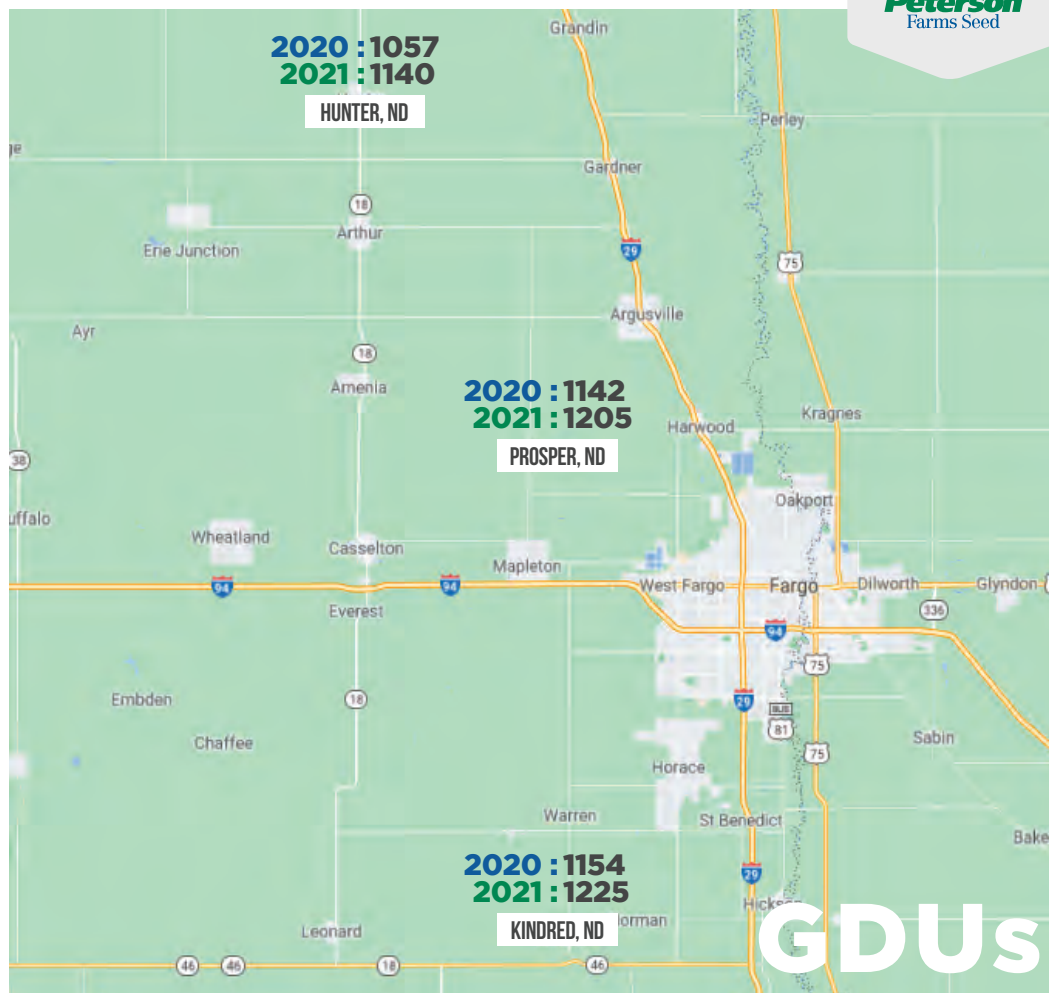


WEEKLY NOTES

Kindred: In the last week, a lot of fields have really turned around. We grew through the IDC in most areas and beans have really taken off. On the corn, we are finding some really nice ears but we are going to need more moisture for things to keep moving along. Our medium ground is doing really well. The light hilltops and the heavy clays are in tougher shape.

Prosper: Beans are starting to put pods on, with most at R2. Corn was looking really nice last week but the heat on the way will make some drought symptoms flare up again. We are finding some very large cracks in the fields - even in fields with 2x rain this year. Area wheat is filling in, but definitely with smaller kernel sizes than average. Farmers are expecting a harvest date in the first week of August.

KINDRED: JADE ALBRECHT
TYLOR JOHNSON
PROSPER: MICHAEL SHUTT
DREW RODEN
HUNTER: KAELIN KYLLO
TROY WIEGANDT
701-282-7476



2021 PFS Locations Departure From Normal

