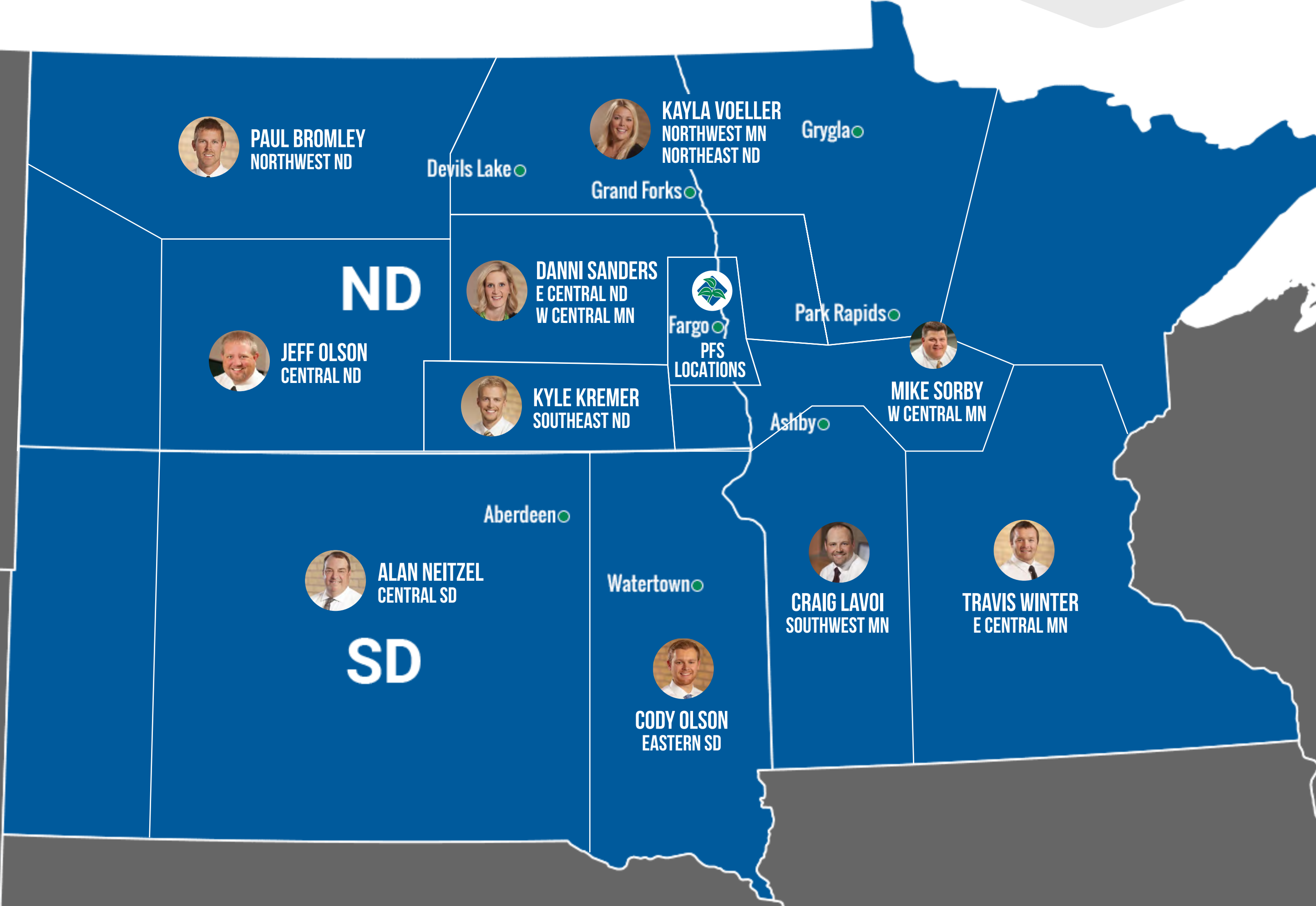


CLICK ON AN AREA OF THE MAP TO SEE GDU INFORMATION FOR THE WEEK OF JULY 20



WEEK OF JULY 20, 2021

JEFF OLSON CENTRAL ND



WEEKLY NOTES

Like a few other areas "Hanging On" is the theme of the week.

The hilltops are about toast but low areas are still hanging on pretty well.

Driving along the Interstate you can really see those areas that had 5-8" in June. There are pockets that still look nice, however, we are also seeing very uneven tassel with the variability of stand establishment this spring.

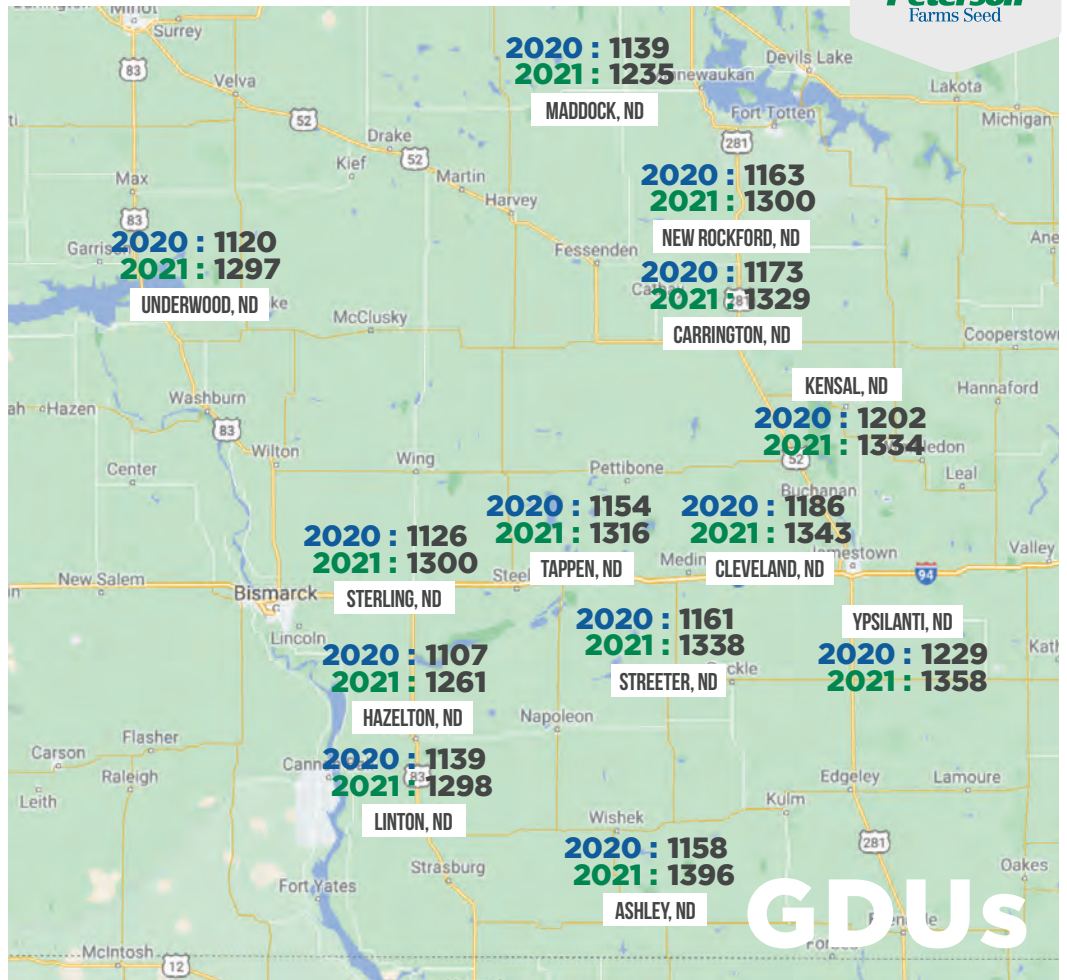
Soybeans look pretty good, all things considered, but will need rain soon to keep filling pods.



JEFF OLSON

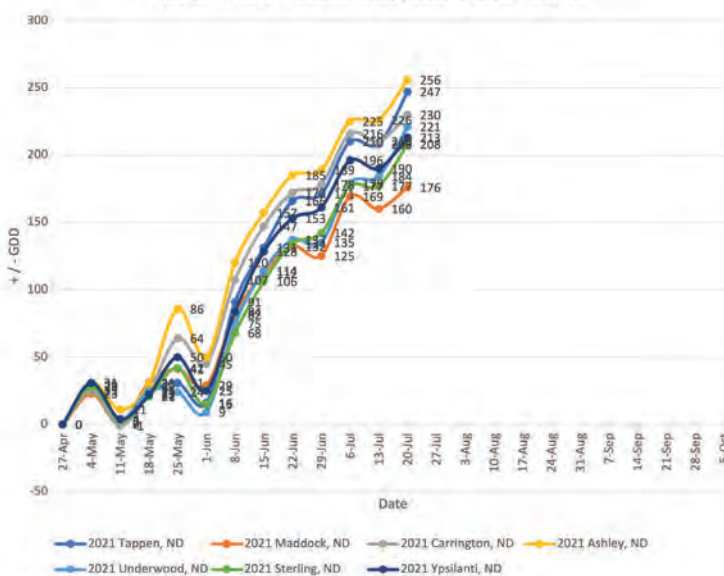
701-659-3246

JEFF@PETERSONFARMSSEED.COM

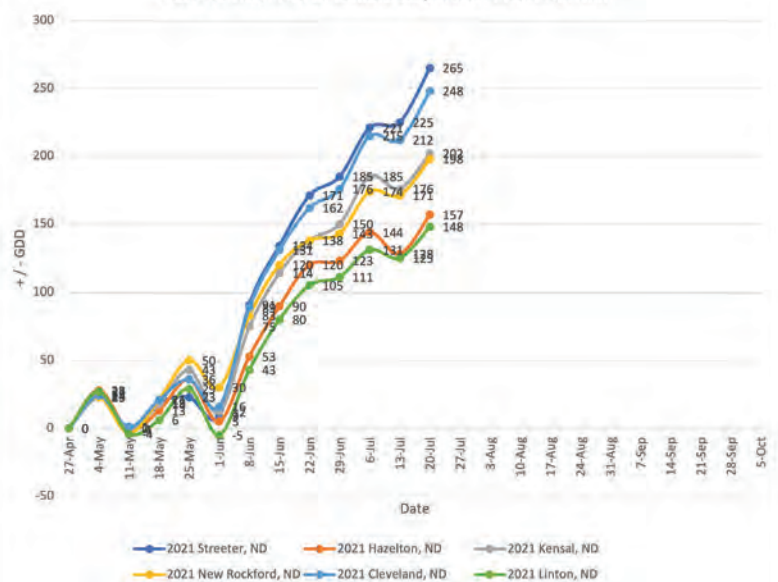


GDU

2021 Central North Dakota Departure From Normal



2021 Central North Dakota Departure From Normal



WEEK OF JULY 20, 2021

KAYLA VOELLER

NORTHEAST ND
NORTHWEST MN



WEEKLY NOTES

I've been out touring this week and I am feeling a bit better than last week, especially with the rain!

Tassels are showing all over on the corn and beans are starting to fill in.

Grasshoppers still seem to be a bit of an issue and aphids are just starting show up but not at any threshold yet.

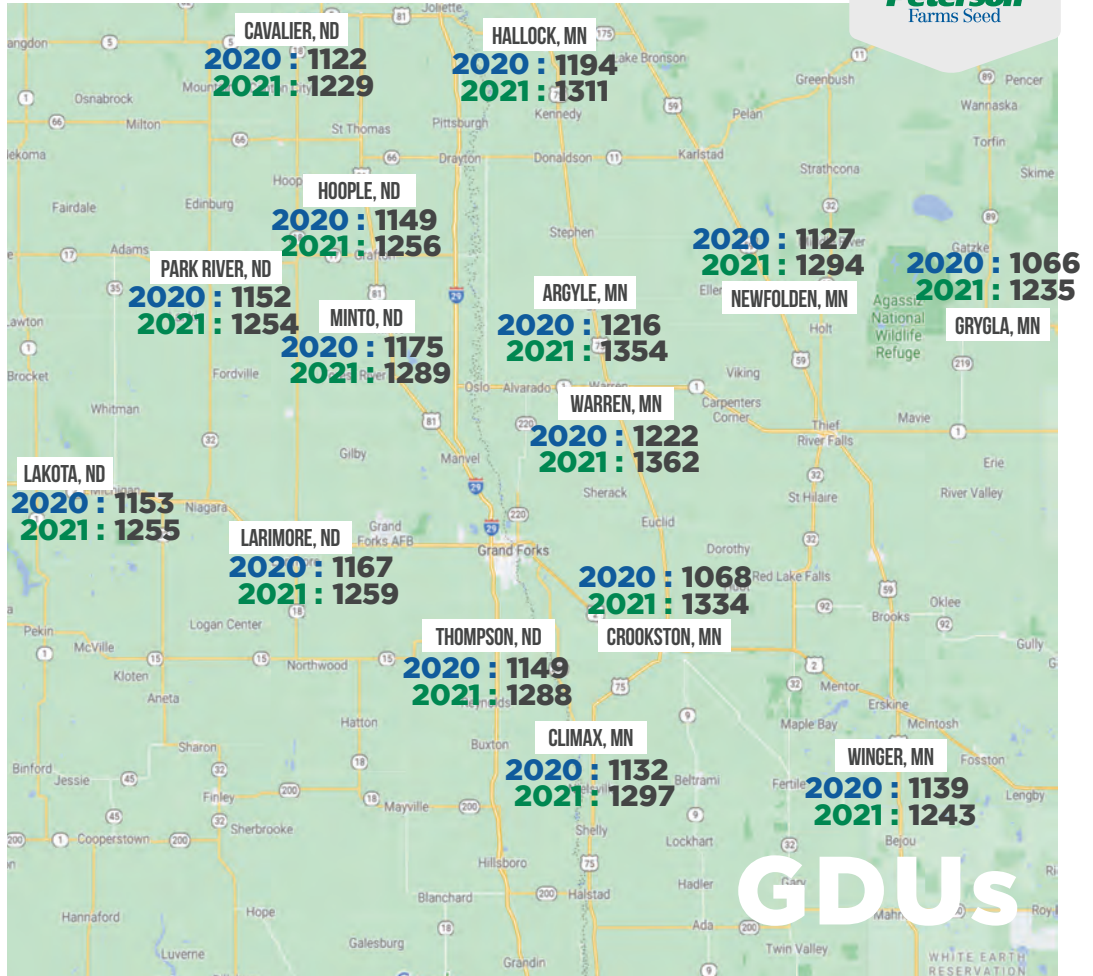
The smoke and haze is helping keep temperatures down, which is a positive.



KAYLA
VOELLER

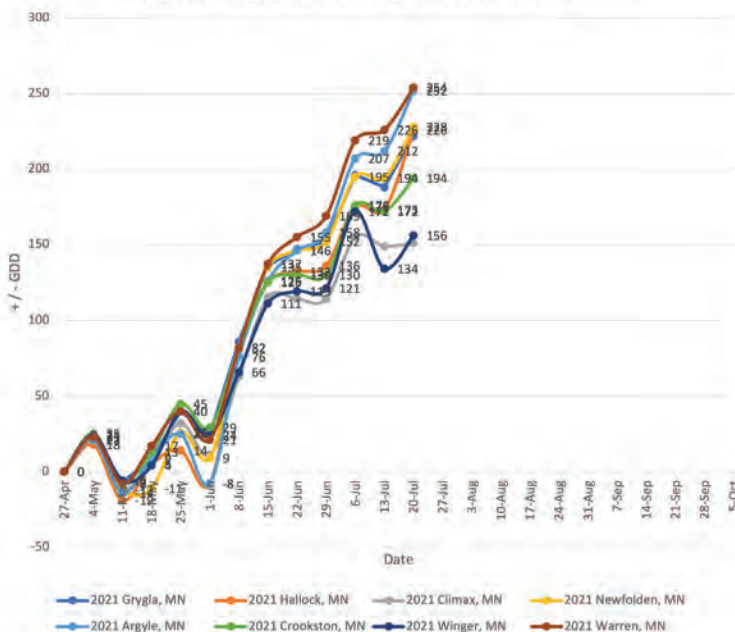
701-430-6820

KAYLA@PETERSONFARMSSEED.COM

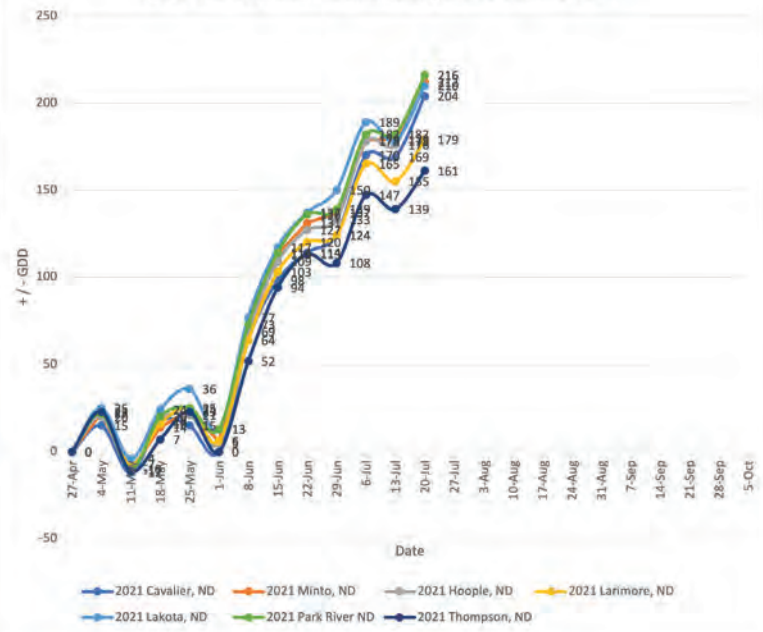


GDU

2021 Northwest Minnesota Departure From Normal



2021 North East North Dakota Departure From Normal



WEEK OF JULY 20, 2021

MIKE SORBY WEST CENTRAL MN

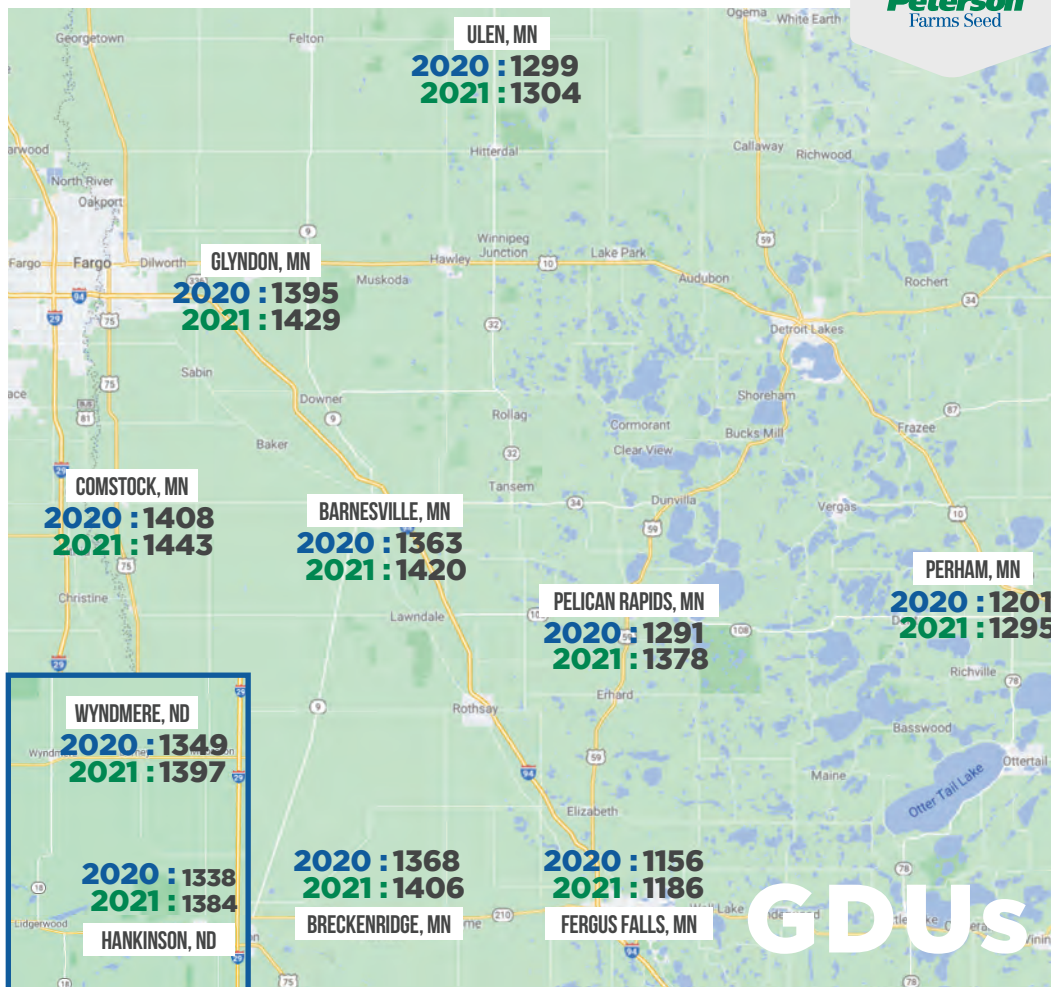


WEEKLY NOTES

We need rain.

Some areas got a little shot of rain but other areas are still in desperate need of moisture.

The crops that did catch some moisture look good and are coming along nicely.

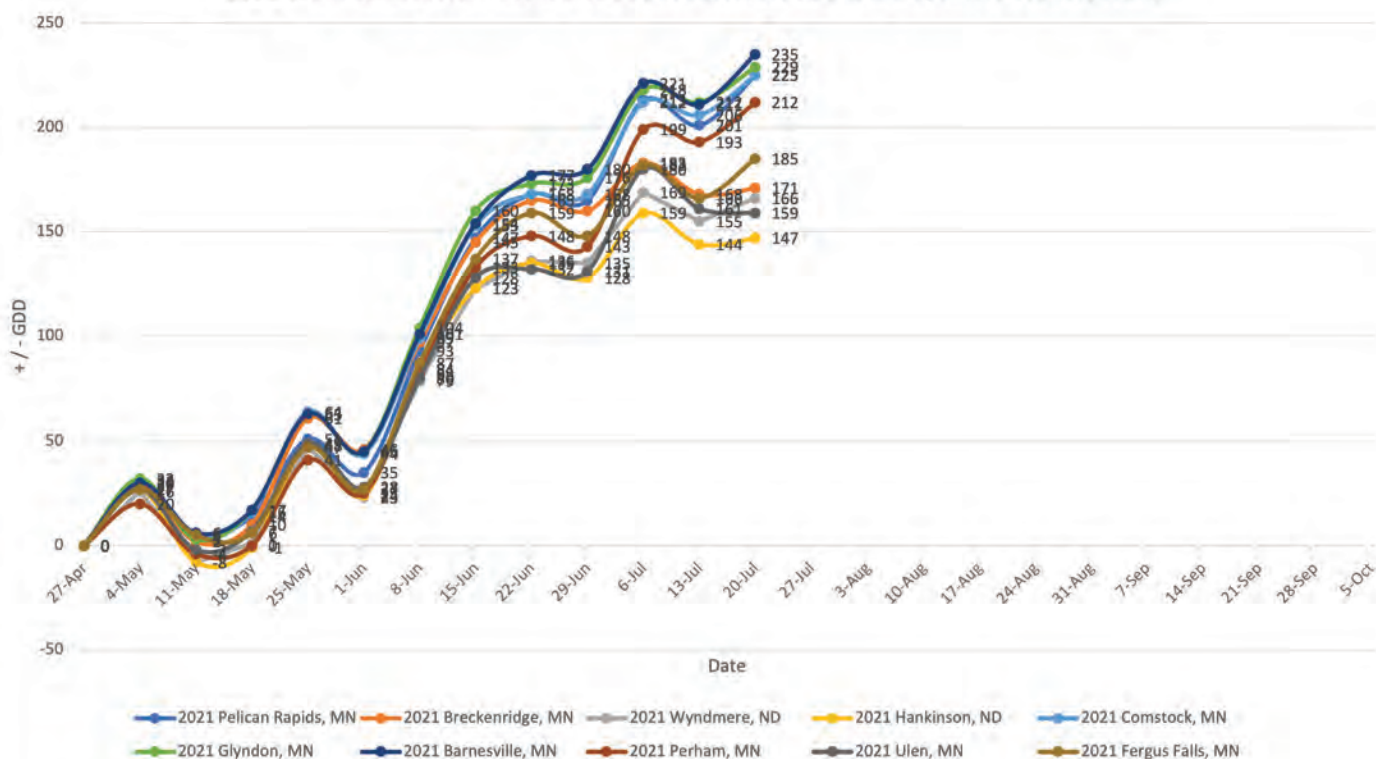


MIKE SORBY

701-238-3914
MIKES@PETERSONFARMSSEED.COM

GDU

2021 West Central Minnesota and South East North Dakota Departure From Normal



WEEK OF JULY 20, 2021

TRAVIS WINTER EAST CENTRAL MN



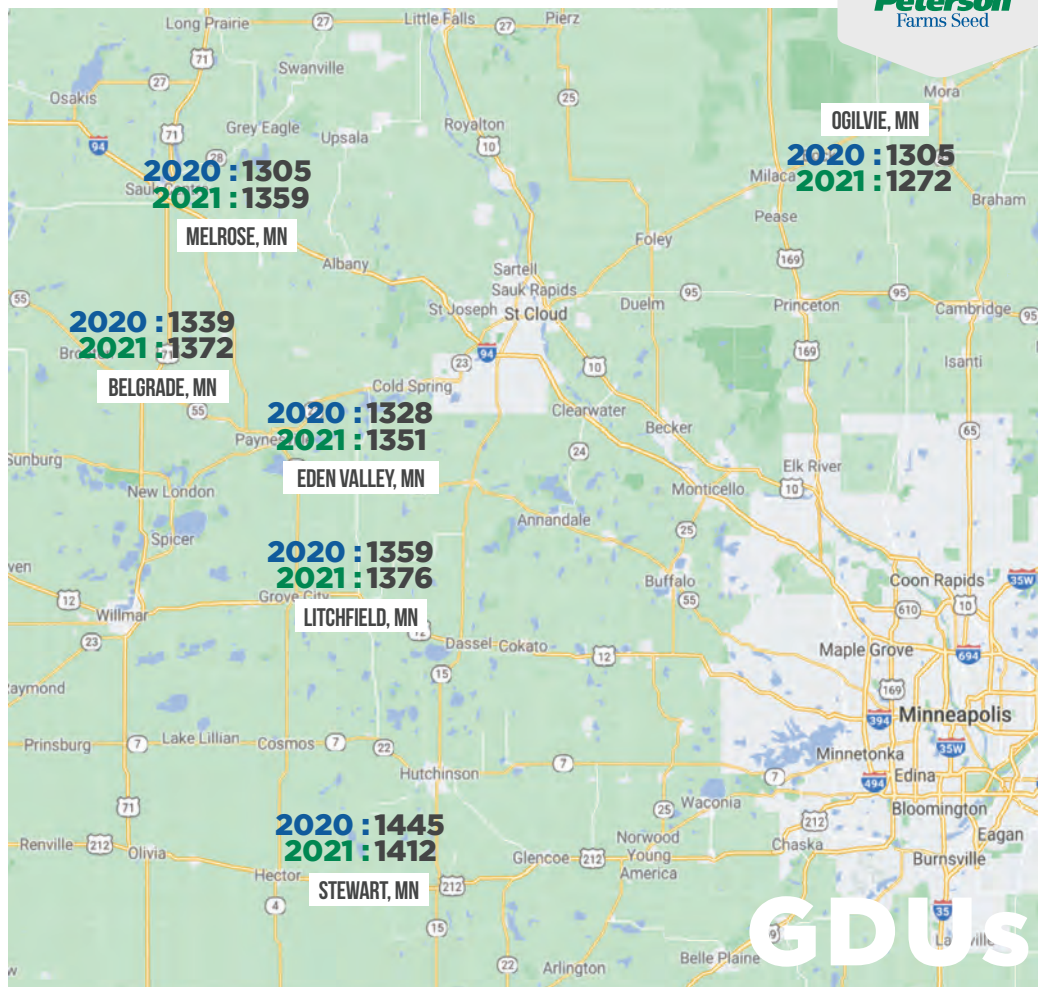
WEEKLY NOTES

The pollen is dropping in the corn for a big chunk of my territory.

The northern half is really hurting for moisture with fields on lighter ground really going backwards in the last week. The heavier ground is hanging on but starting to go the same way.

I have started to see a lot of pods showing up in bean fields, but lower leaves have started to drop on the soybeans in the lighter ground. The southern area is doing pretty well but they still have not seen an abundance of rain by any means!

I am going to start keeping an eye out for spider mites with more reports of them this week.



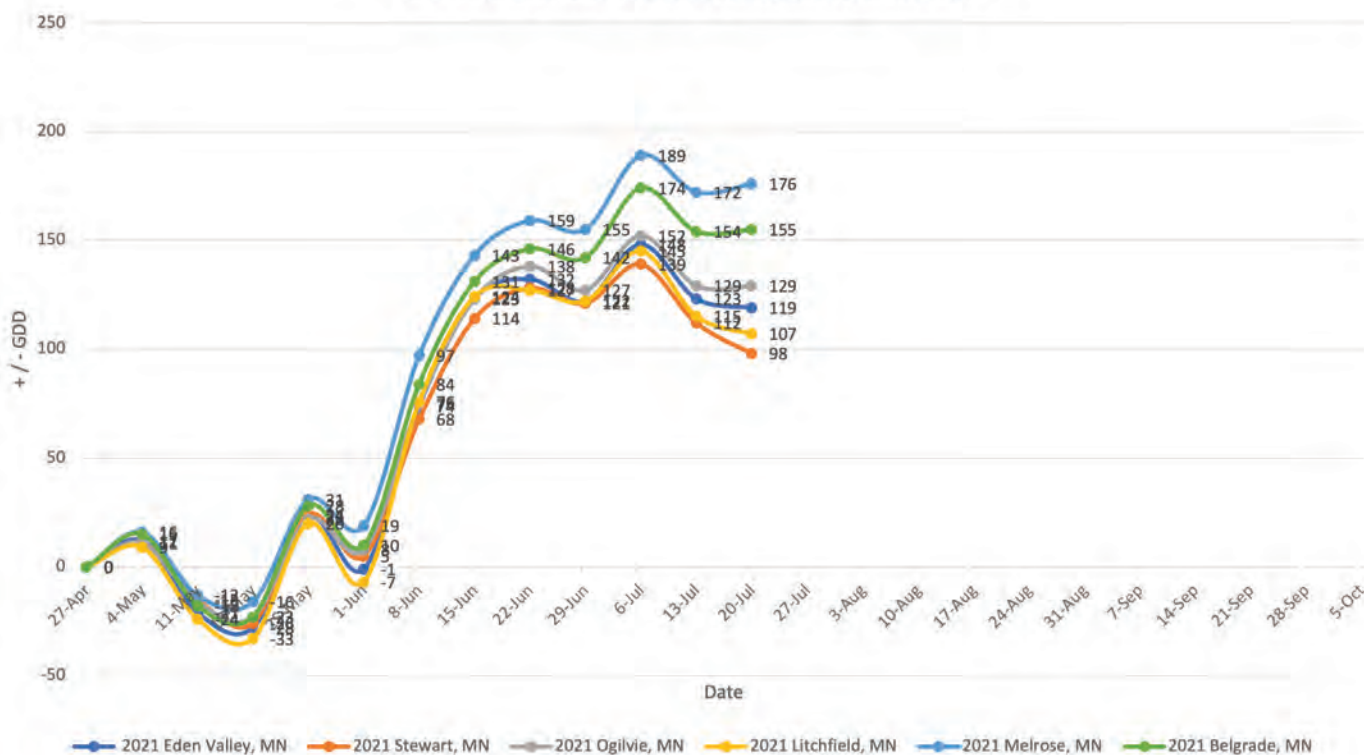
TRAVIS WINTER

320-290-4096

TRAVIS@PETERSONFARMSSEED.COM

GDU

2021 Central Minnesota Departure From Normal



WEEK OF JULY 20, 2021

PFS RETAIL LOCATIONS



WEEKLY NOTES

Hunter: "Hanging On" is the most common phrase used in our area and most everything in our area is doing just that. Some gravel ridges are about toast but the heavier ground continues to handle the dry soils quite well. Very early fields looked to have pollinated well so hopefully that continues. A few flea beetles can be found clipping silks but I don't expect them to be a huge issue. Soybeans are probably taking the dry better than the corn and are growing well. Most fields are setting pods on at least the bottom half of the plant.

Prosper: The rain was nice to see on Tuesday. We are starting to see seed pod development in the earlier maturities and corn is pollinating like crazy - the cobs have some serious potential! Aphids are hanging out on the corn but in small quantities. Michael Shutt and I found a field of spider mites near the West Fargo airport so we will stay on the lookout for that as I would encourage farmers to do, also. I'm impressed with the roots on the corn and the soybeans with the last month of the heat. Expecting wheat harvest by the 1st of August.

KINDRED: JADE ALBRECHT
TYLOR JOHNSON
PROSPER: MICHAEL SHUTT
DREW RODEN
HUNTER: KAEVIN KYLLO
TROY WIEGANDT
701-282-7476

