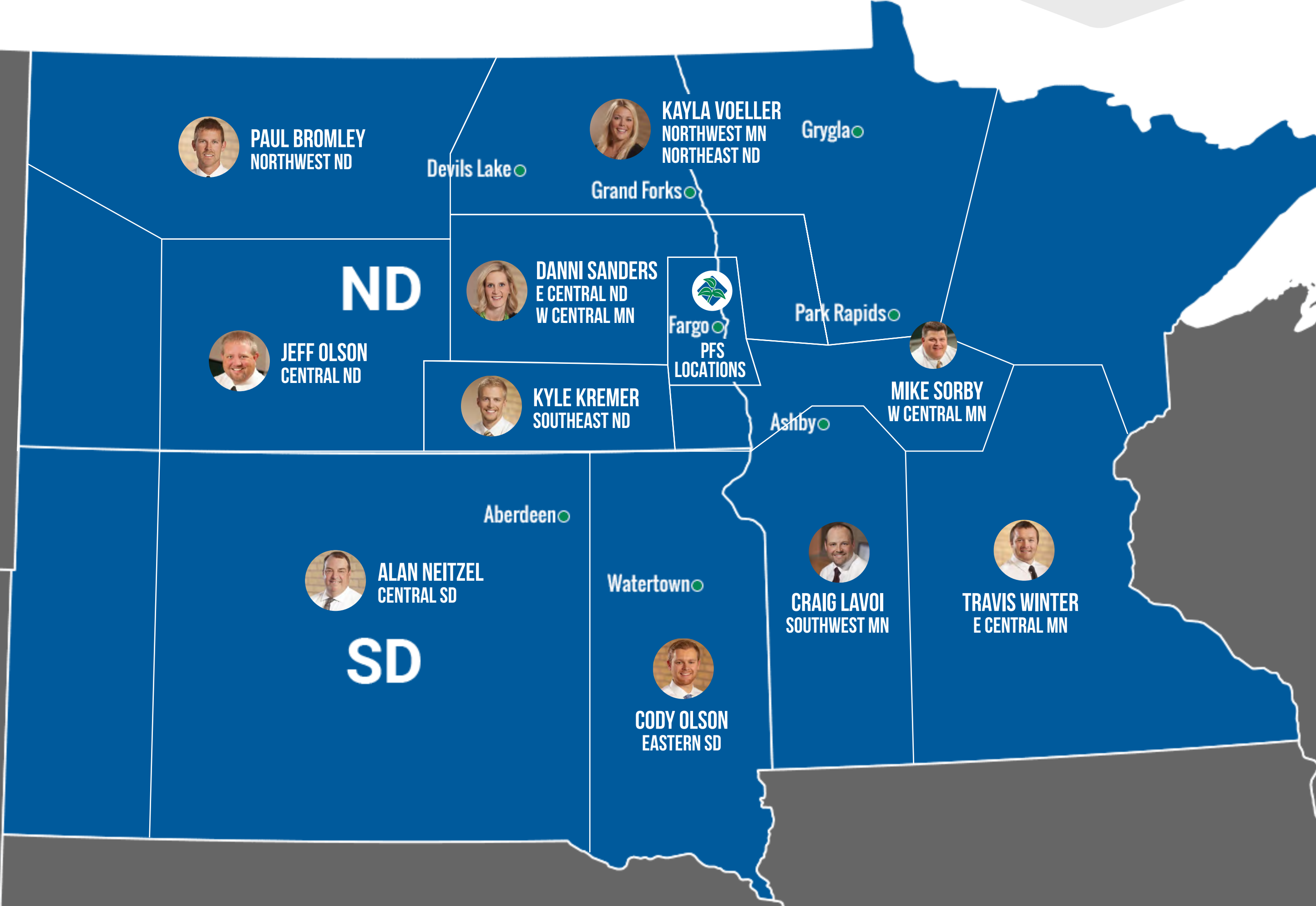


# CLICK ON AN AREA OF THE MAP TO SEE GDU INFORMATION FOR THE WEEK OF JULY 6



WEEK OF JULY 6, 2021

# ALAN NEITZEL CENTRAL SD



## WEEKLY NOTES

Yesterday (7/6) we picked up anywhere from .35" -1.5" with almost everyone getting some moisture. We will need more by next week.

Tassels should be showing up soon. The corn has progressed slowly with the lack of moisture.

Some beans look really good while others are sitting still. Overall, some pockets look really, really good while a few others the rain won't bring back.

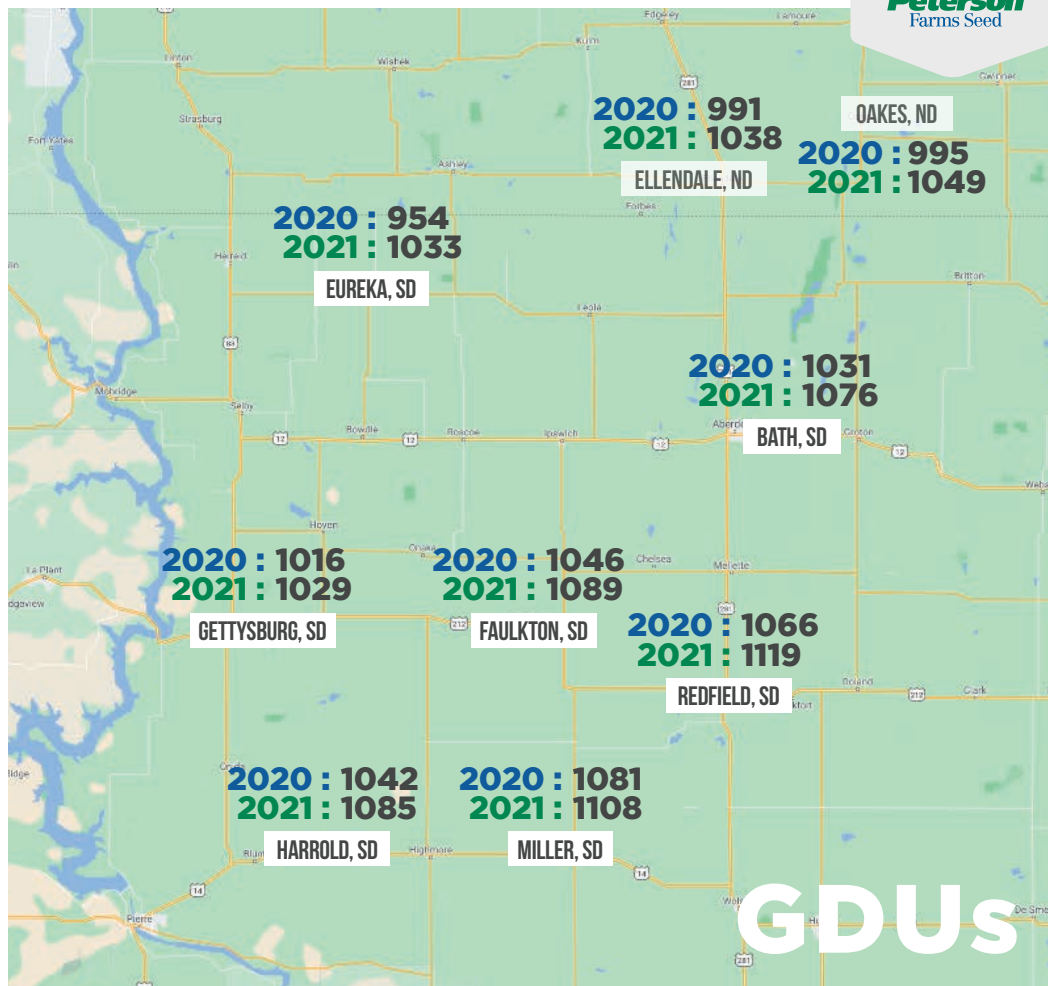
Wheat harvest has started west of Miller.



**ALAN  
NEITZEL**

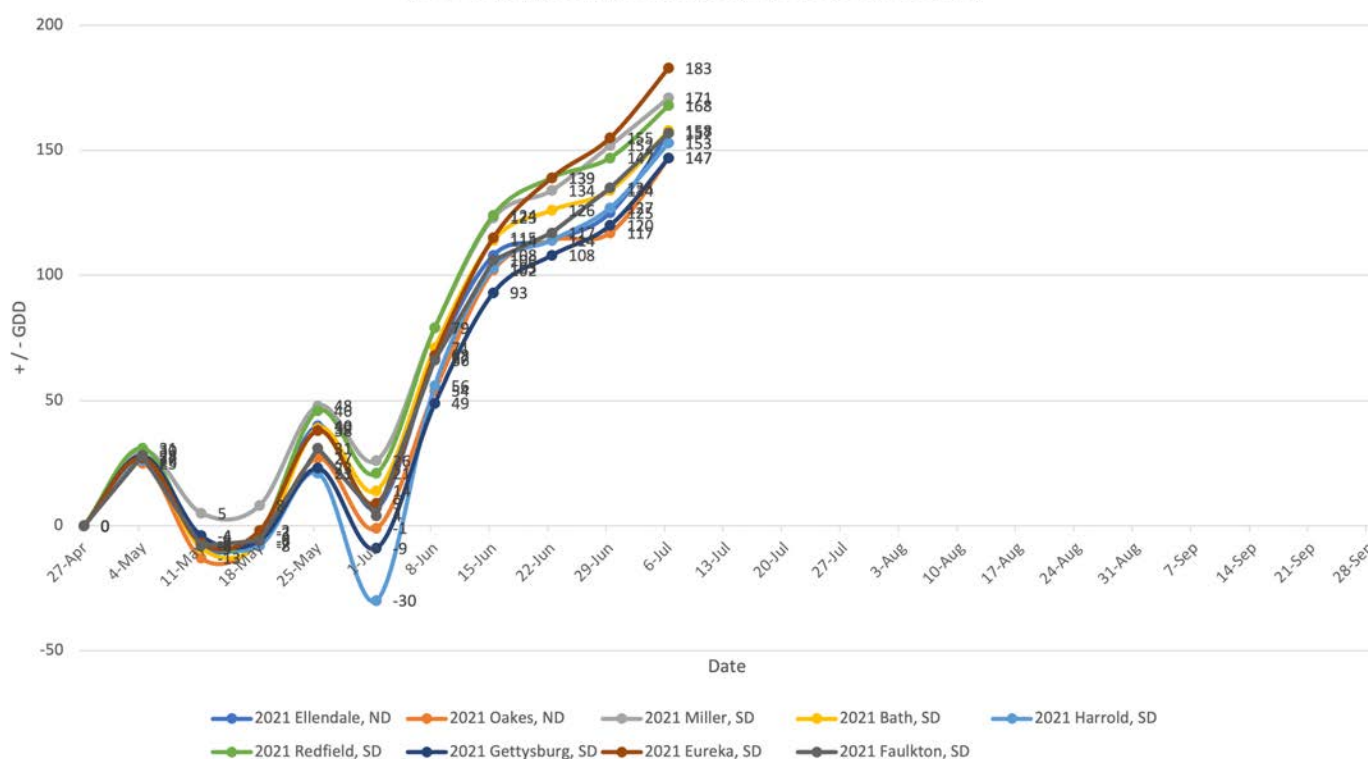
605-380-8920

ALAN@PETERSONFARMSSEED.COM



**GDU**

2021 Central South Dakota Departure From Normal







WEEK OF JULY 6, 2021

# CRAIG LAVOI SOUTHWEST MN



## WEEKLY NOTES

Most of my territory picked up some rain on the 6th, with amounts ranging from .25"-.5"

The last 3 to 4 days of heat really highlighted the stress on sandier ground.

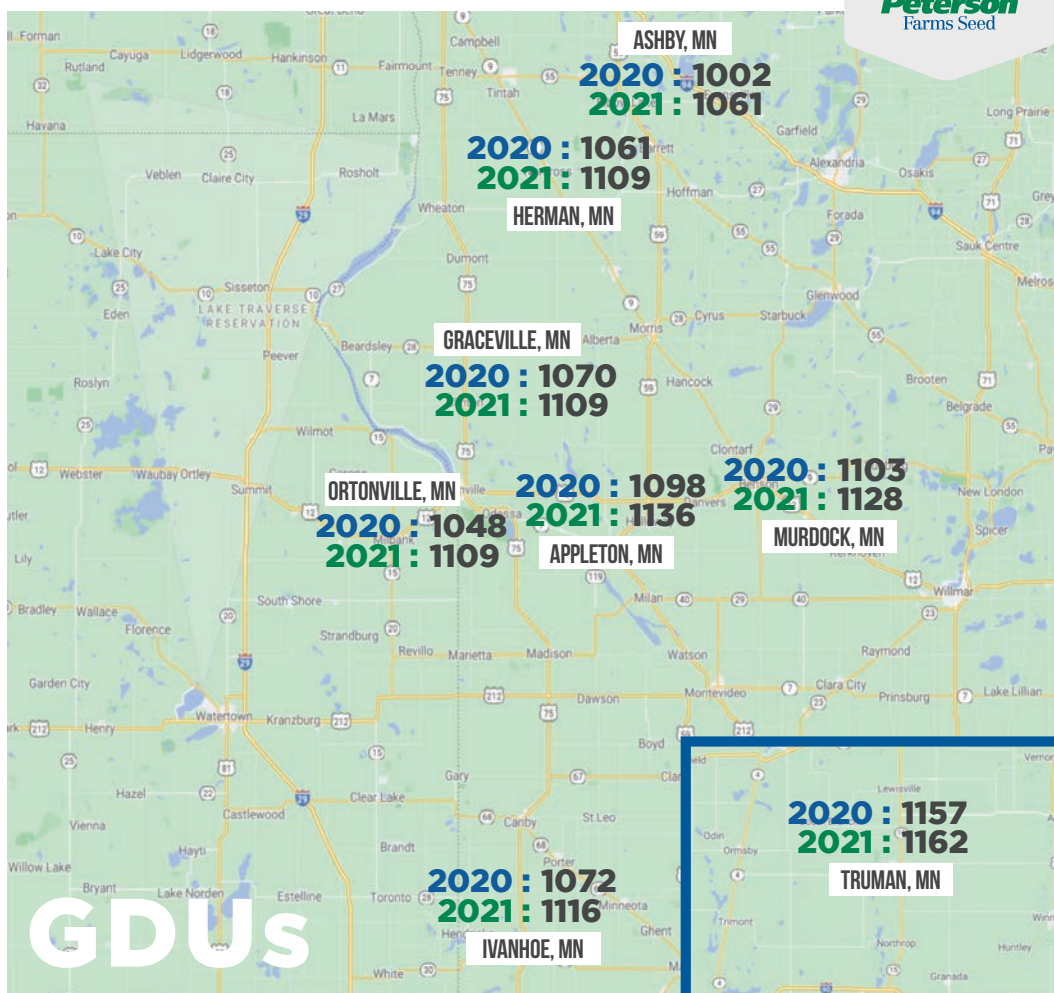
Soybeans are starting to fill in really nicely, especially the last week. The first couple of tassels showed up over the weekend.



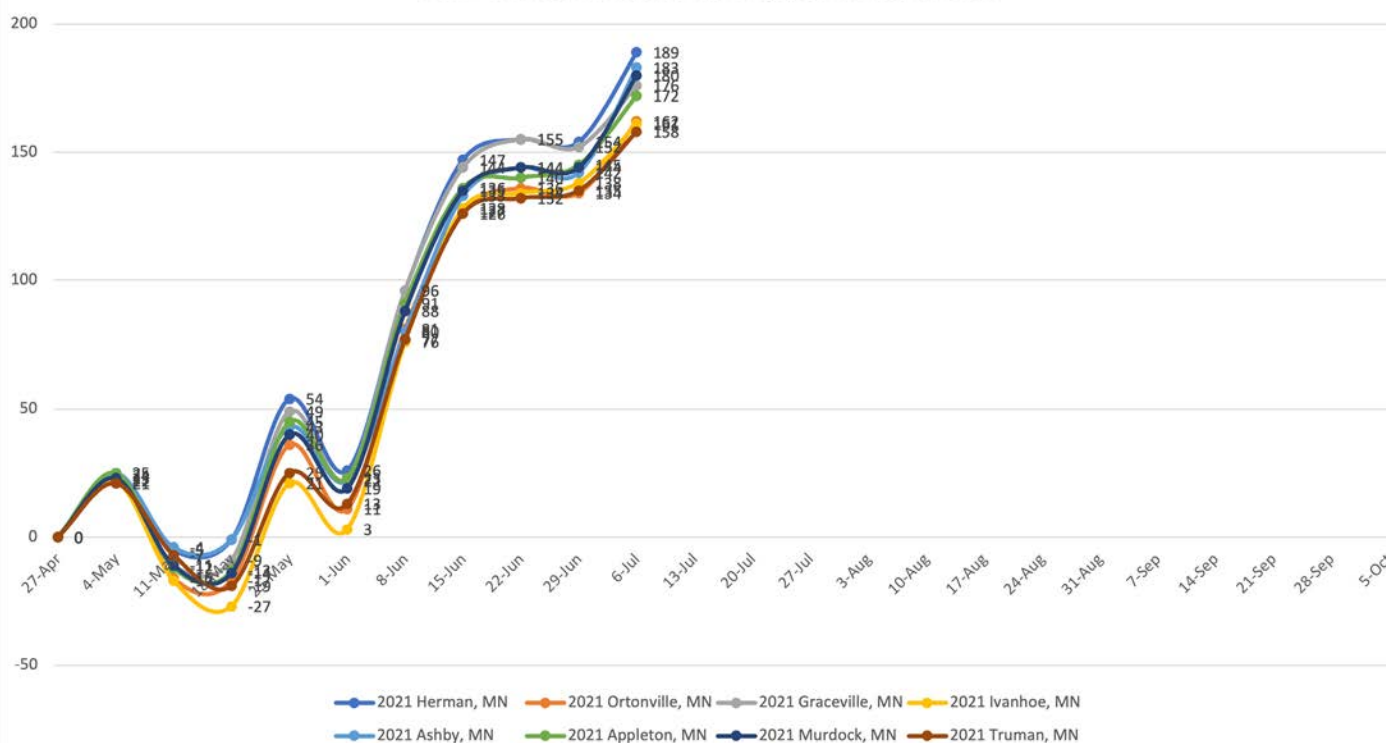
**CRAIG  
LAVOI**

218-282-0791

CRAIG@PETERSONFARMSSEED.COM



2021 Southwest Minnesota Departure From Normal





WEEK OF JULY 6, 2021

# JEFF OLSON CENTRAL ND



## WEEKLY NOTES

We picked up a bit more rain over the weekend and yesterday. Some of the lighter-ground corn fields were showing some stress with the heat the last few days so the rain was welcomed.

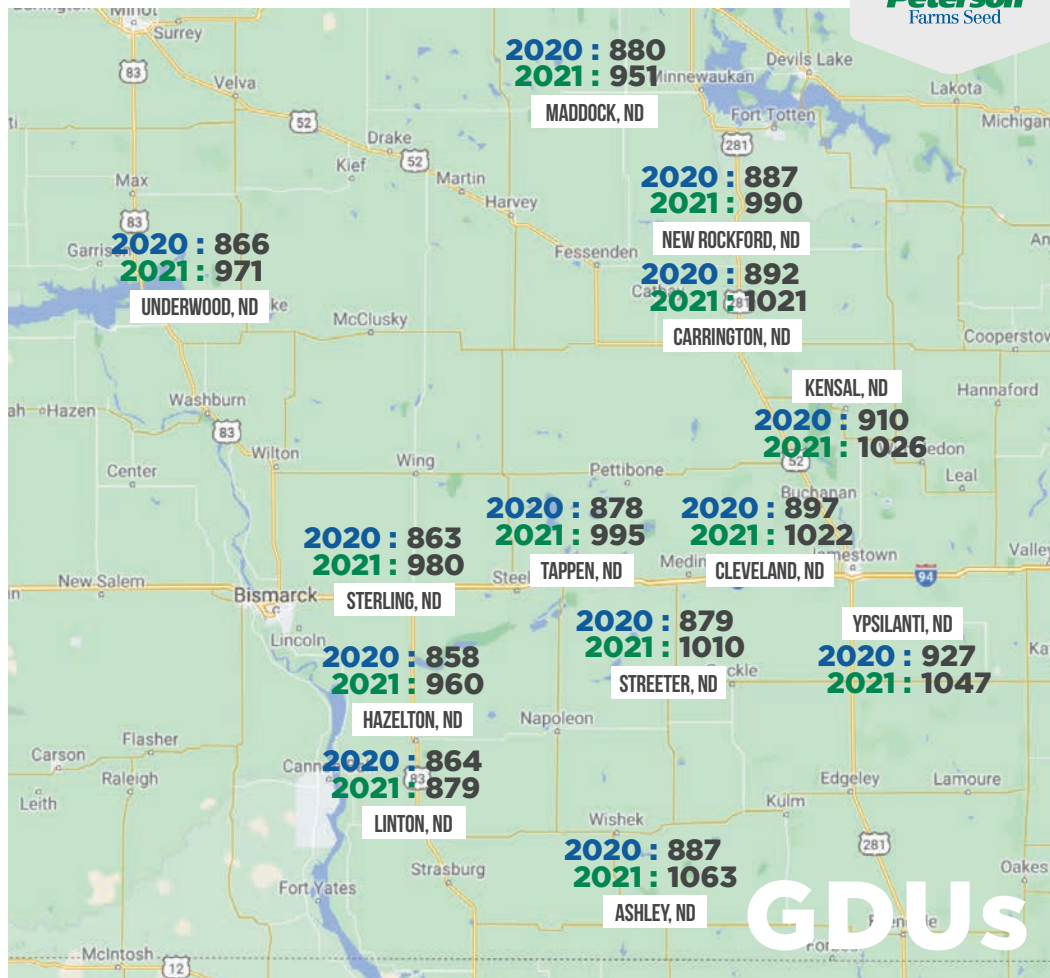
With a few more shots of rain, the soybeans may not end up being tall but they do have some yield potential. The June 30th deadline on Xtend saw a pretty good push to finish up the second round of spraying.



# JEFF OLSON

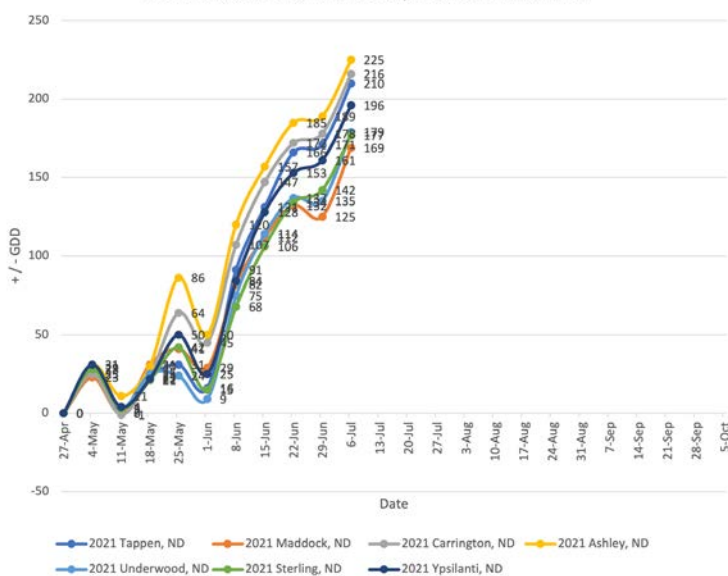
701-659-3246

JEFF@PETERSONFARMSSEED.COM

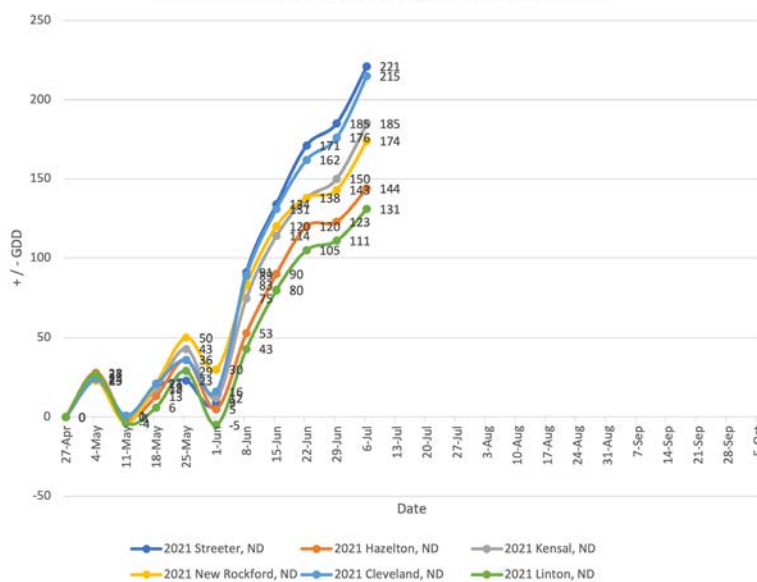


# GDU

2021 Central North Dakota Departure From Normal



2021 Central North Dakota Departure From Normal













**WEEK OF JULY 6, 2021**

**PAUL BROMLEY** NORTHWEST ND



## WEEKLY NOTES

We've got some soybeans getting close to R2 with flowers showing up at the top of the plant. The heat and dry conditions have shortened internodes and some flowers are pretty low on the plant.

It was another scattered weekend of rain, with some getting up to .75" while others saw only about .2" which is just enough to keep everyone going.

Corn is really starting to stretch out, from V8 to V11. Most of the corn has grown 1-2' in the last week and the internodes are really started to elongate.

## WEEKLY NOTES

We've got some soybeans getting close to R2 with flowers showing up at the top of the plant. The heat and dry conditions have shortened internodes and some flowers are pretty low on the plant.

It was another scattered weekend of rain, with some getting up to .75" while others saw only about .2" which is just enough to keep everyone going.

Corn is really starting to stretch out, from V8 to V11. Most of the corn has grown 1-2' in the last week and the internodes are really started to elongate.

## WEEKLY NOTES

We've got some soybeans getting close to R2 with flowers showing up at the top of the plant. The heat and dry conditions have shortened internodes and some flowers are pretty low on the plant.

It was another scattered weekend of rain, with some getting up to .75" while others saw only about .2" which is just enough to keep everyone going.

Corn is really starting to stretch out, from V8 to V11. Most of the corn has grown 1-2' in the last week and the internodes are really started to elongate.

## WEEKLY NOTES

We've got some soybeans getting close to R2 with flowers showing up at the top of the plant. The heat and dry conditions have shortened internodes and some flowers are pretty low on the plant.

It was another scattered weekend of rain, with some getting up to .75" while others saw only about .2" which is just enough to keep everyone going.

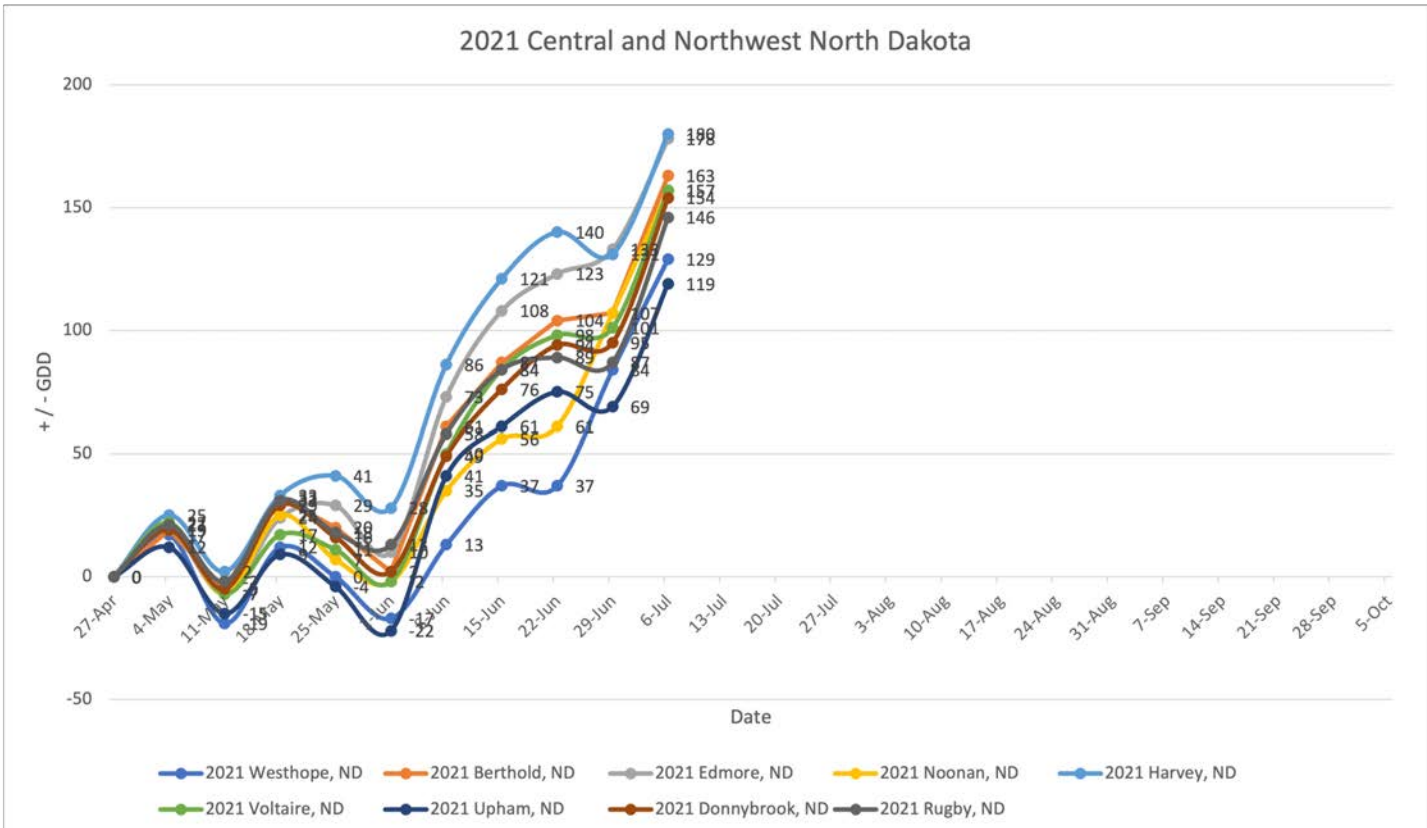
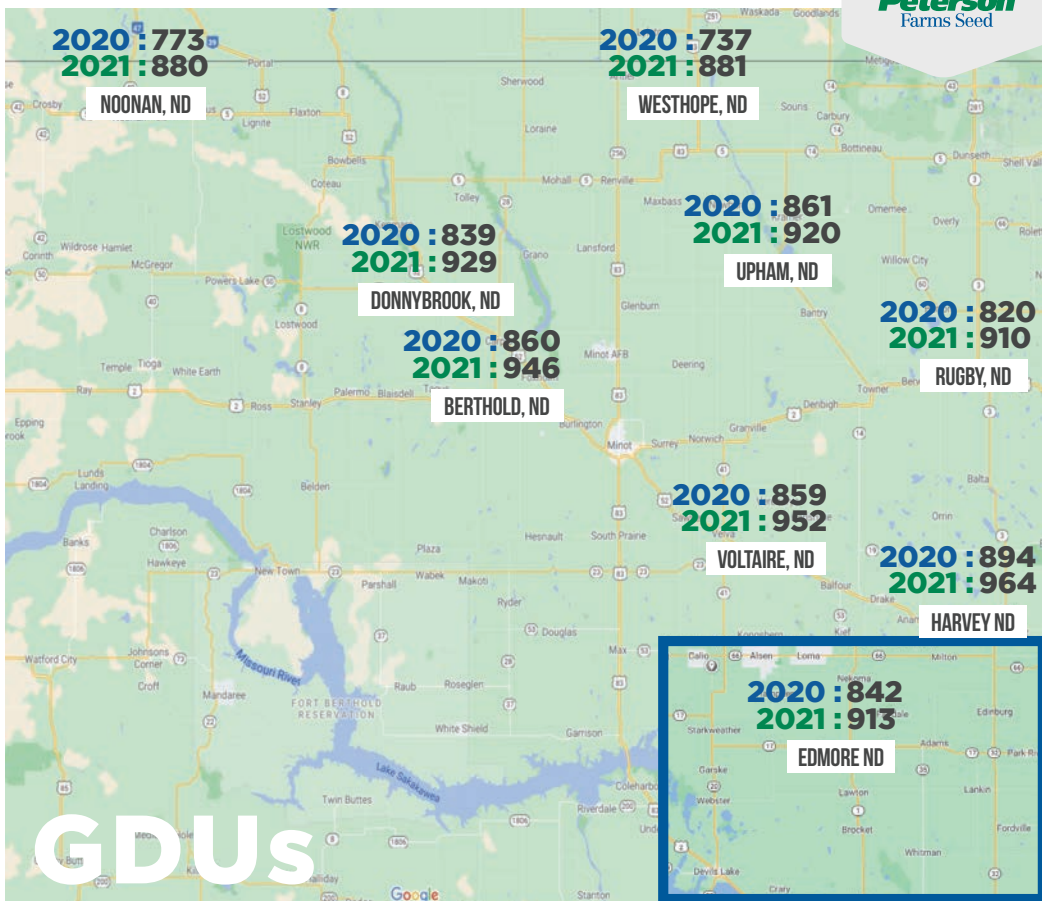
Corn is really starting to stretch out, from V8 to V11. Most of the corn has grown 1-2' in the last week and the internodes are really started to elongate.



**PAUL  
BROMLEY**

**701-399-6944**

**PAUL@PETERSONFARMSSEED.COM**





WEEK OF JULY 6, 2021

# TRAVIS WINTER EAST CENTRAL MN



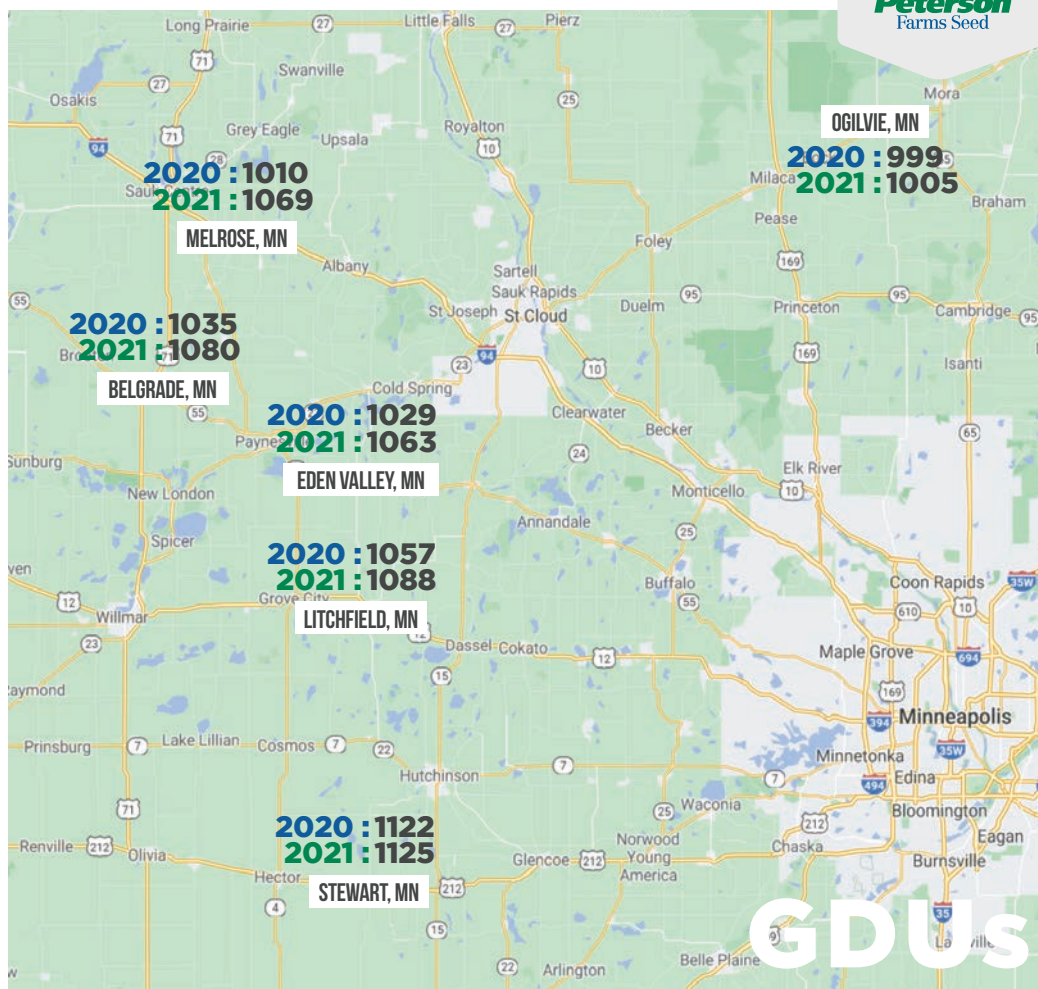
## WEEKLY NOTES

The southern half of my area looks good and should be tasseling by the end of the week with the nice rains we've seen the last couple weeks.

Belgrade country was looking dry before the .5" and has recovered but will need more rain.

The northern section of my territory has also been picking up some really nice rain and the crops are showing it. Even Long Prairie picked up almost an inch.

The soybeans are getting close to canopy even on 30" rows and are filled with flowers.



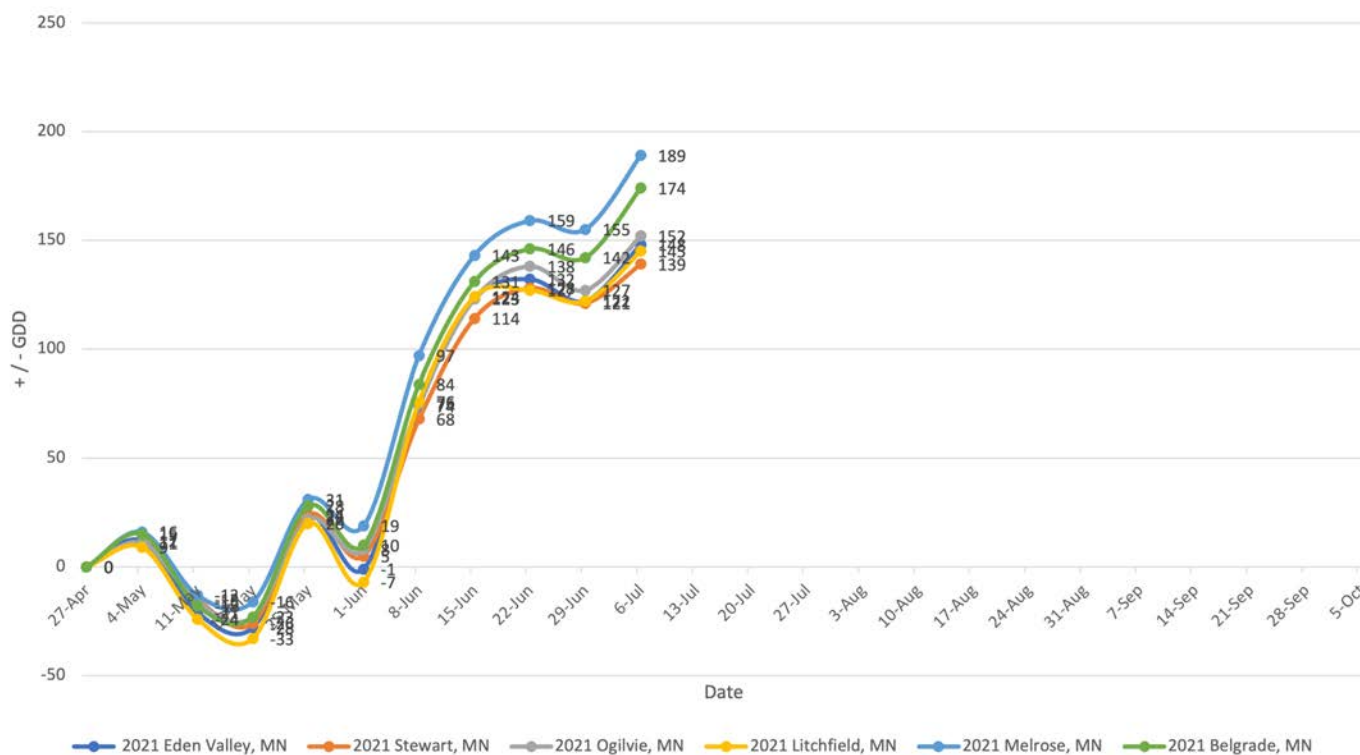
TRAVIS WINTER

320-290-4096

TRAVIS@PETERSONFARMSSEED.COM

GDU

2021 Central Minnesota Departure From Normal





WEEK OF JULY 6, 2021

# PFS RETAIL LOCATIONS



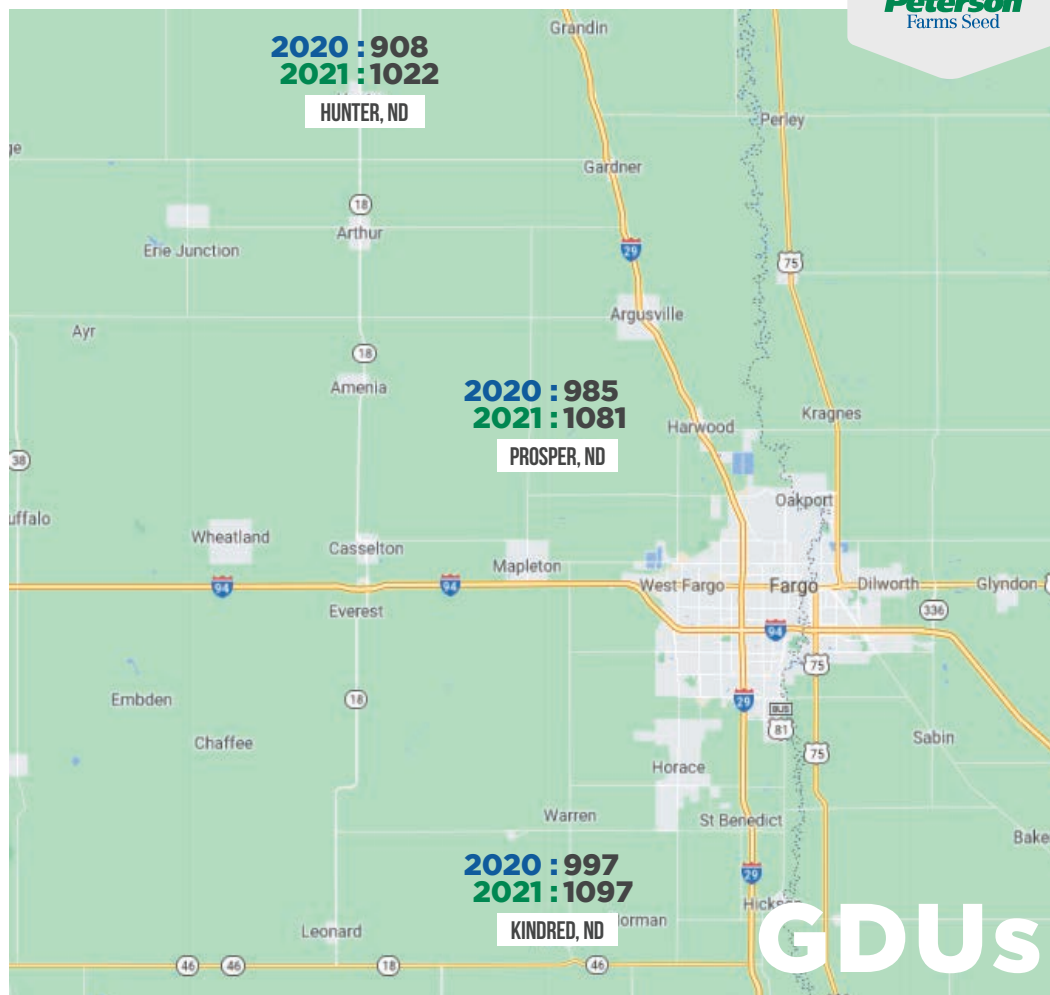
## WEEKLY NOTES

**Hunter:** We saw some spotty rain on Saturday and Tuesday. In the Hunter area, it was about .2" and Fargo was .5". Corn isn't tasseling yet but should be getting close later in the week. Soybeans are starting to look good, some of the replants are starting to fill in nicely. Most farmers are finishing up spraying the beans a second time.

**Kindred:** We picked up a .5" of rain yesterday which will really help things along. The farmers in the hills would still be happy to pick up some more. None of the corn is tasseling but it is getting close. Replants are starting to fill in really nice. This week we are right in the middle of our second spray on the soybeans.

**Prosper:** The corn is sitting at V11 which means we'll hopefully see some tassels next week. Soybeans are starting to canopy. Wheat may even get combined in a couple weeks which seems strange to think about this early. The rain on the 6th was really spotty with some not getting any at all while Harwood picked up .75"

**KINDRED:** JADE ALBRECHT  
TYLOR JOHNSON  
**PROSPER:** MICHAEL SHUTT  
DREW RODEN  
**HUNTER:** KAEVIN KYLLO  
TROY WIEGANDT  
**701-282-7476**



2021 PFS Locations Departure From Normal

