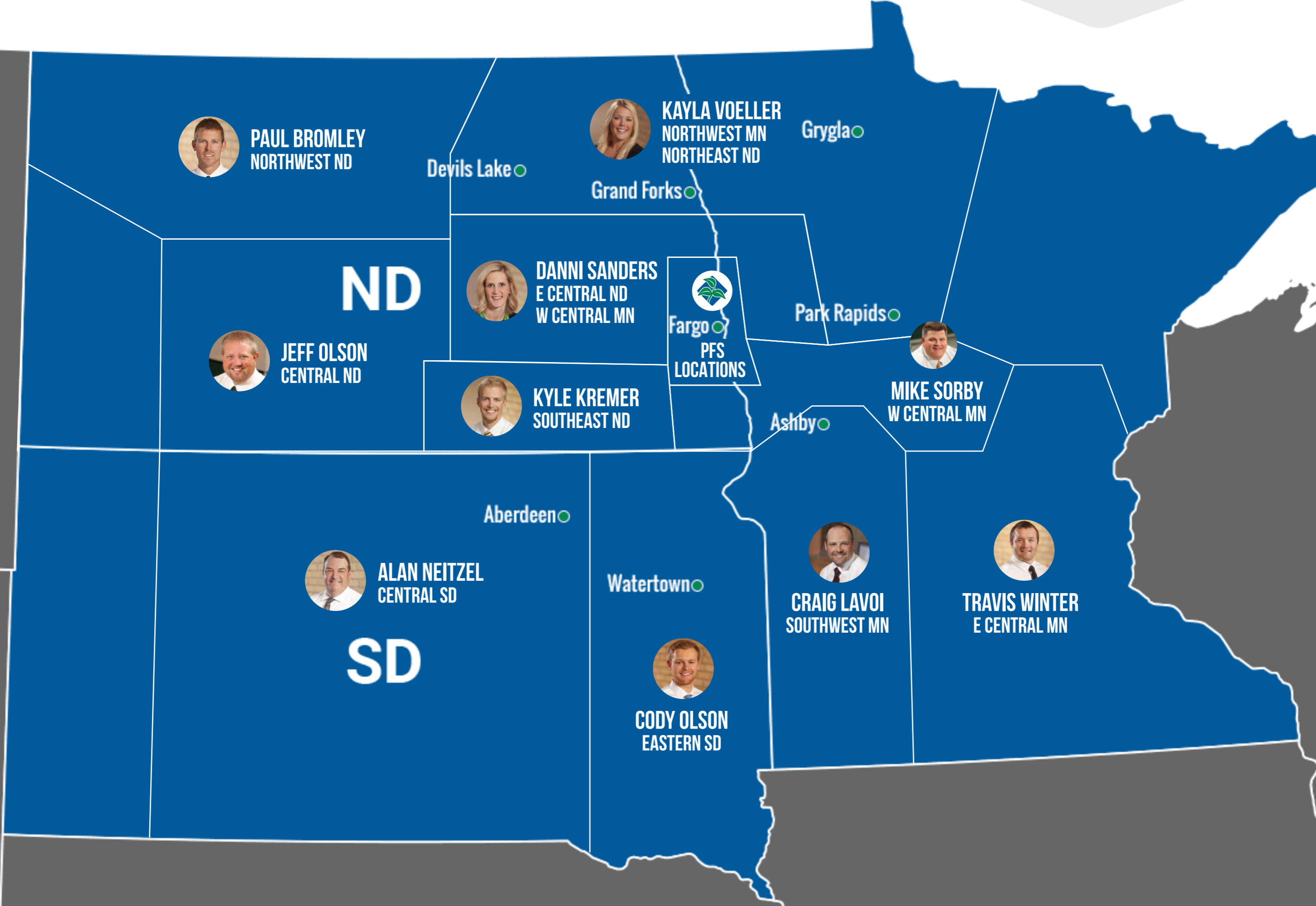


CLICK ON AN AREA OF THE MAP TO SEE GDU INFORMATION FOR THE WEEK OF AUGUST 5



WEEK OF AUGUST 5, 2021

JEFF OLSON CENTRAL ND



WEEKLY NOTES

Area wheat harvest is just starting slowly with uneven maturation. 3-40bu are yield numbers that I am hearing so far, with good protein on low-yielding acres.

Grasshoppers are still a concern in the west. Spider mite populations are starting to increase.

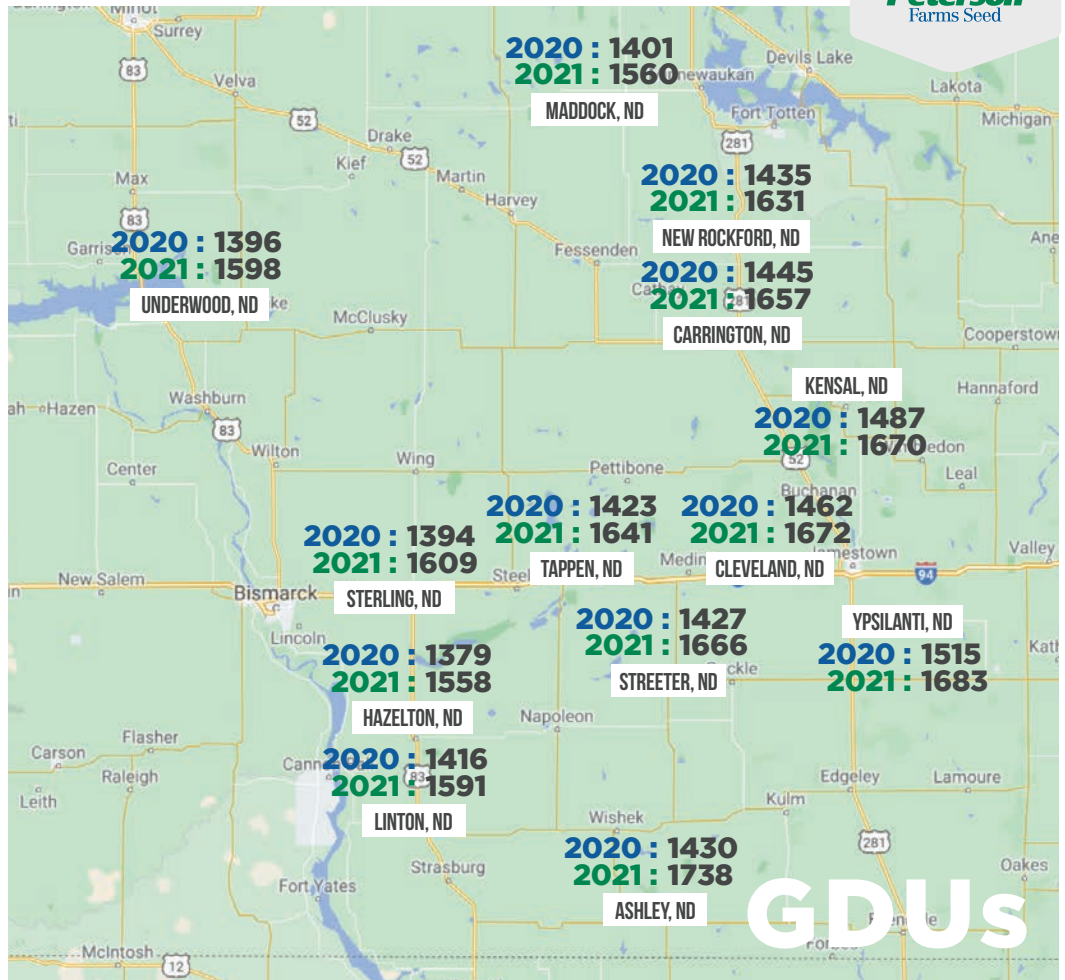
There is a bit of corn being chopped after insurance zeroed it out.



JEFF OLSON

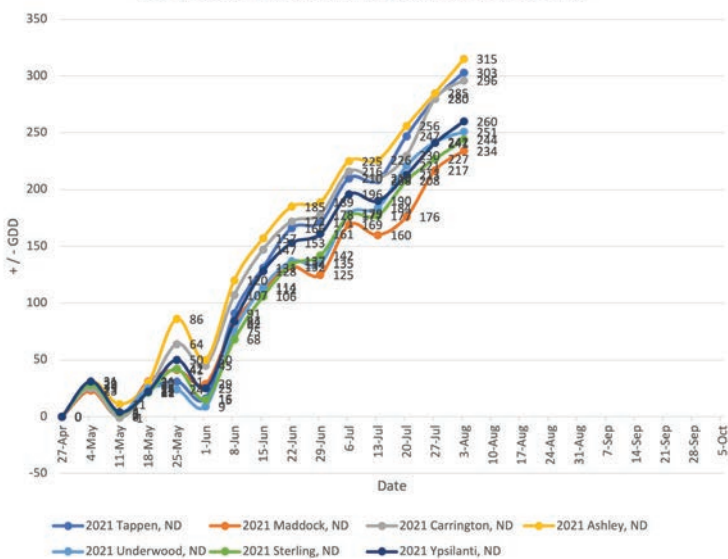
701-659-3246

JEFF@PETERSONFARMSSEED.COM

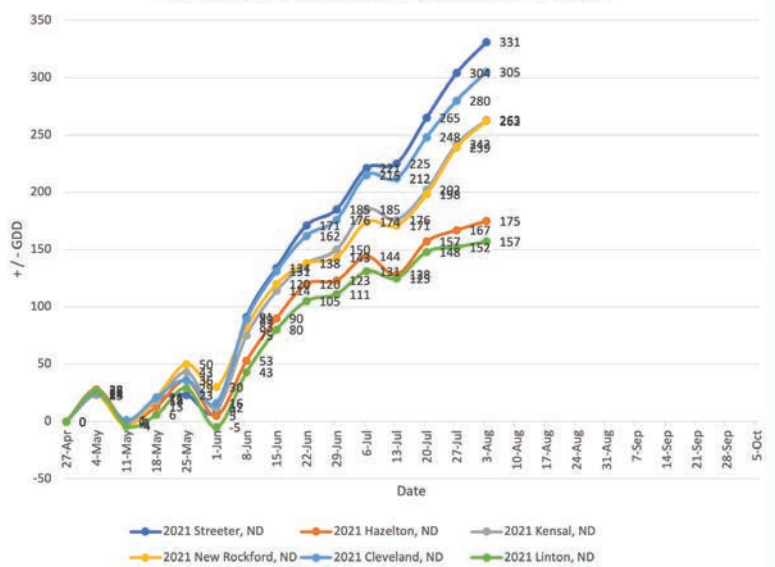


GDU

2021 Central North Dakota Departure From Normal



2021 Central North Dakota Departure From Normal



WEEK OF AUGUST 5, 2021

KAYLA VOELLER



WEEKLY NOTES

Wheat harvest is full steam ahead. Some fields were a complete bust and some yielded surprisingly well, depending on the area.

We are seeing a lot of grasshoppers everywhere. The soybean pods are filling in but it really depends on the area.

WEEKLY NOTES

Wheat harvest is full steam ahead. Some fields were a complete bust and some yielded surprisingly well, depending on the area.

We are seeing a lot of grasshoppers everywhere. The soybean pods are filling in but it really depends on the area.

WEEKLY NOTES

Wheat harvest is full steam ahead. Some fields were a complete bust and some yielded surprisingly well, depending on the area.

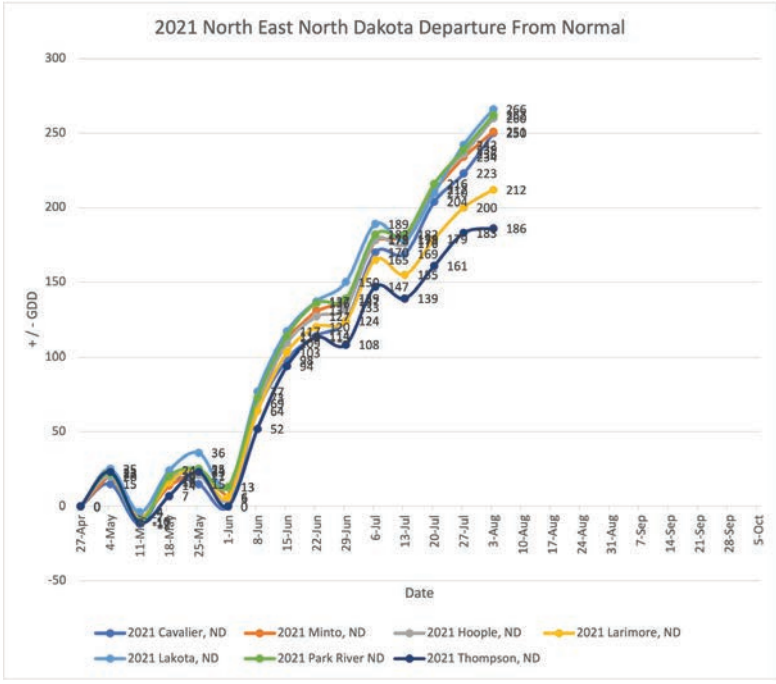
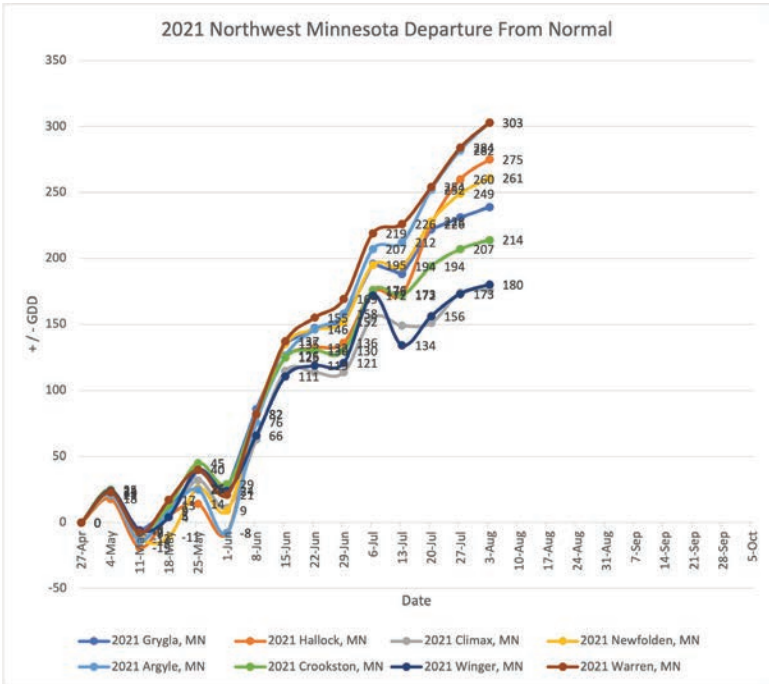
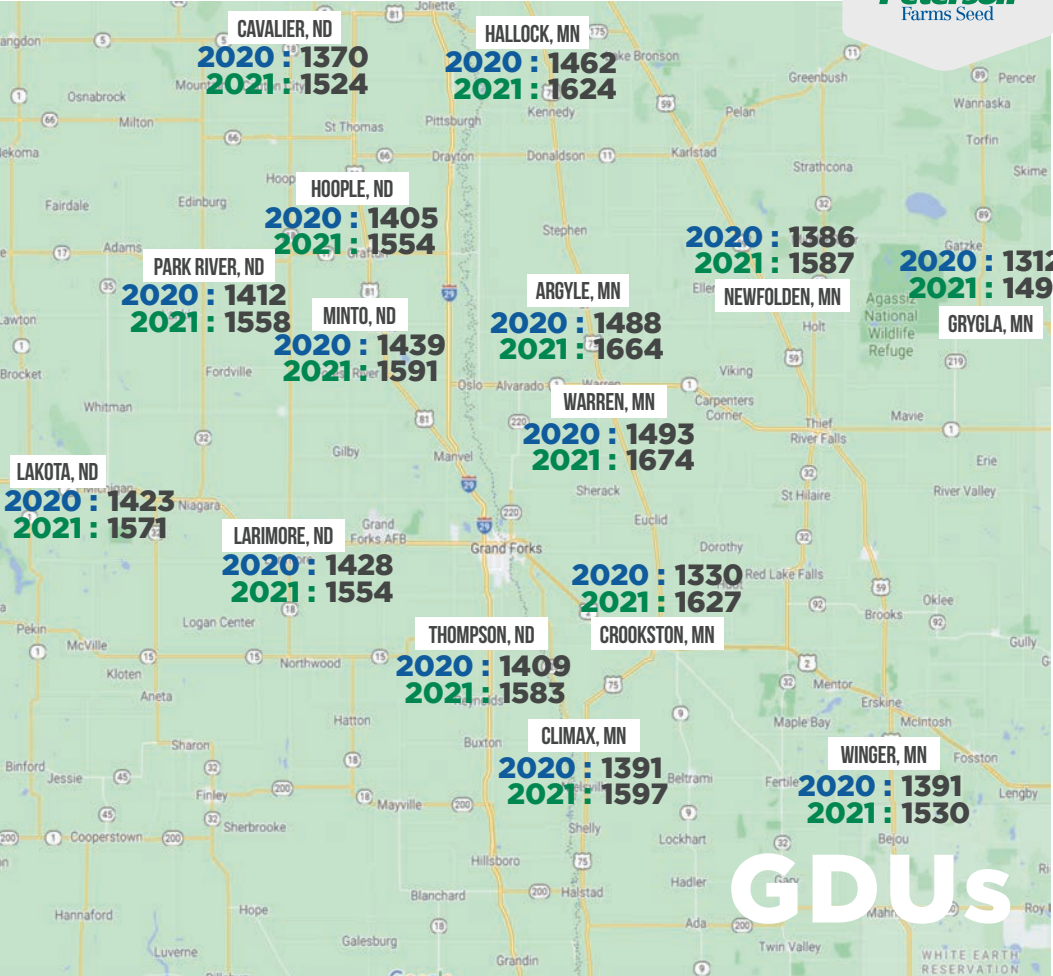
We are seeing a lot of grasshoppers everywhere. The soybean pods are filling in but it really depends on the area.



KAYLA VOELLER



KAYLA VOELLER



WEEK OF AUGUST 5, 2021

KYLE KREMER SOUTHEAST ND



WEEKLY NOTES

Wheat harvest is in full swing. Yields have been relatively low with the summer heat we have had. It is nice to see the combines rolling, though!

Soybeans and corn look good in many areas. A “WeFest” rain would be really helpful in filling pods and kernels. I’m expecting some light test weights this year, but my fingers are crossed.

Wheat harvest is in full swing. Yields have been relatively low with the summer heat we have had. It is nice to see the combines rolling, though!

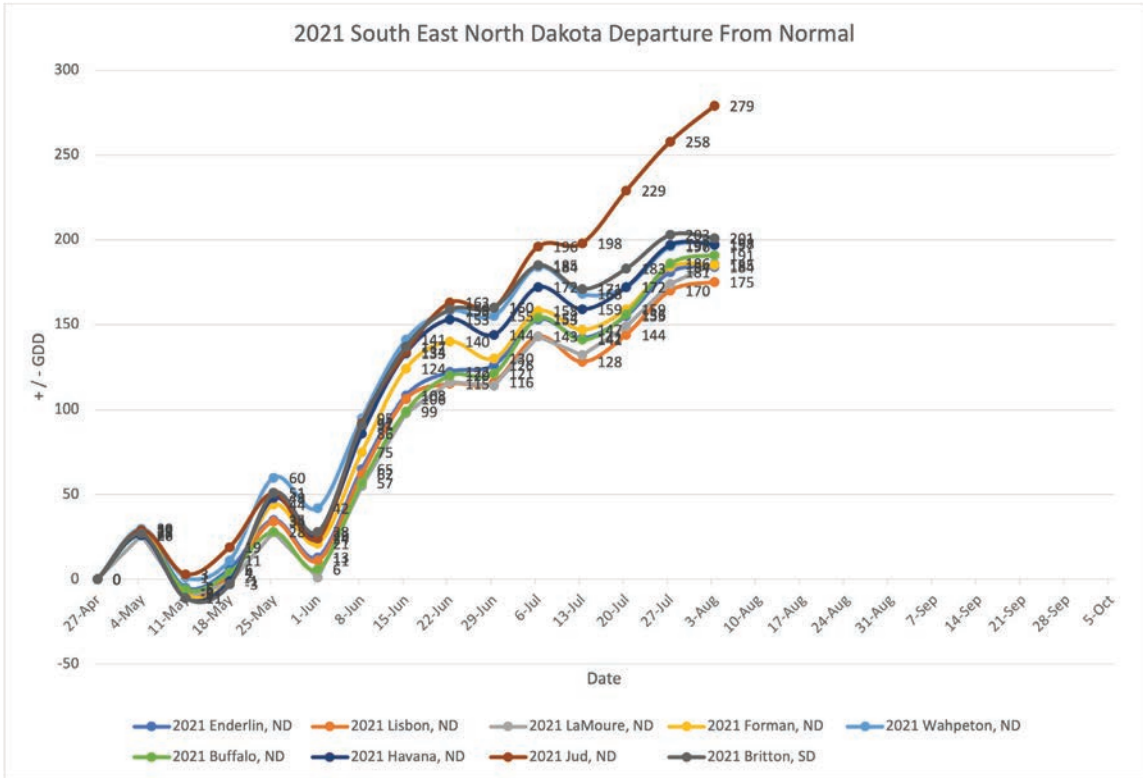
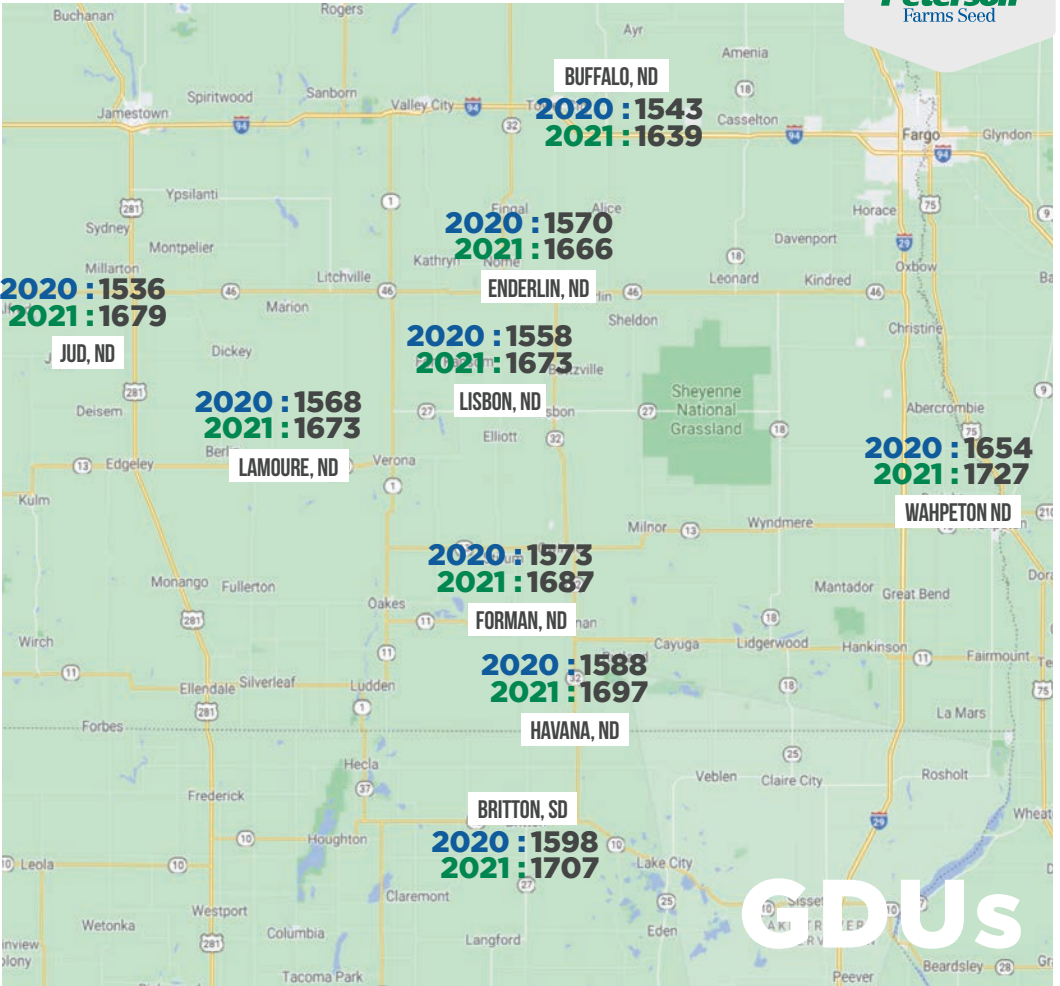
Soybeans and corn look good in many areas. A “WeFest” rain would be really helpful in filling pods and kernels. I’m expecting some light test weights this year, but my fingers are crossed.



KYLE KREMER

701-809-4490

KYLE@PETERSONFARMSSEED.COM



WEEK OF AUGUST 5, 2021

MIKE SORBY WEST CENTRAL MN



WEEKLY NOTES

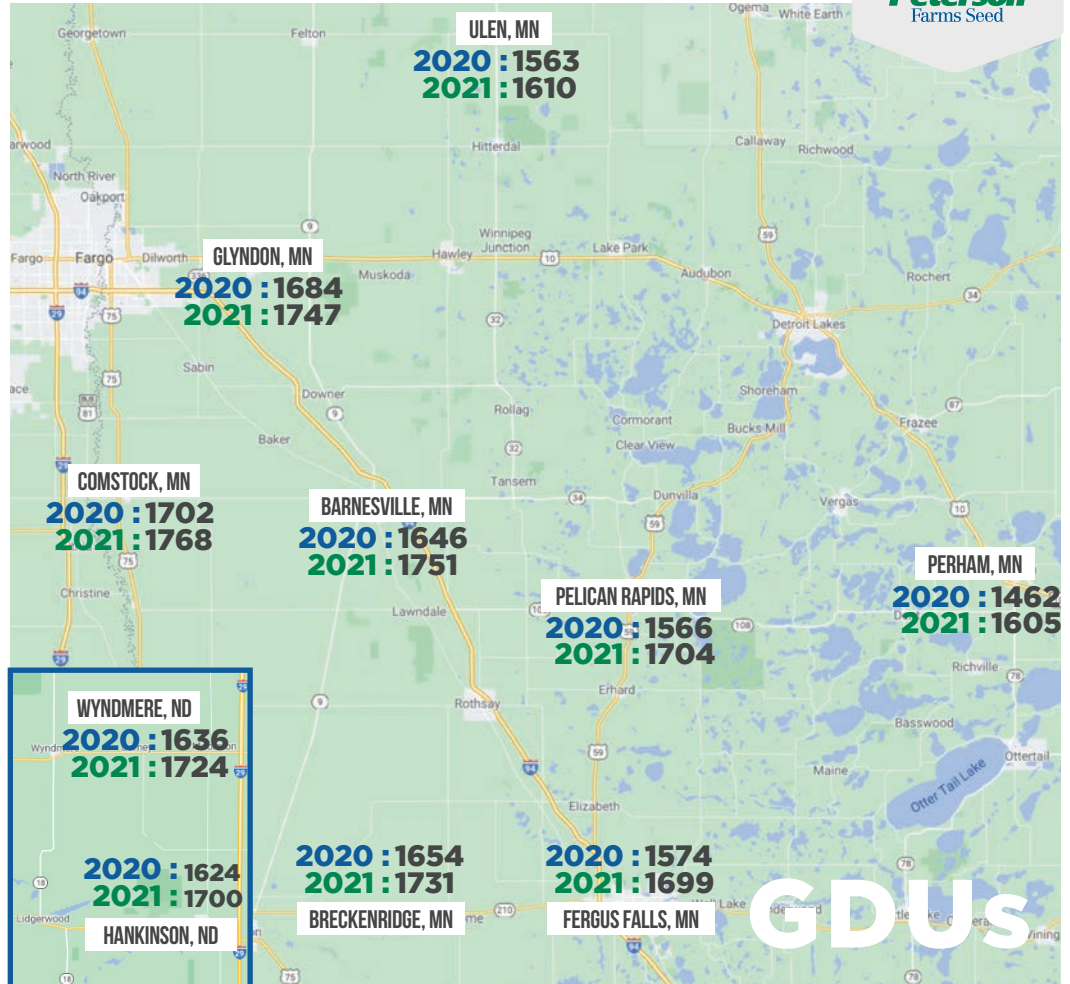
Wheat harvest is coming to an end with decent yields considering the growing season conditions we've had.

73K90 (90RM) has started to dent around the Fergus Falls, MN area.



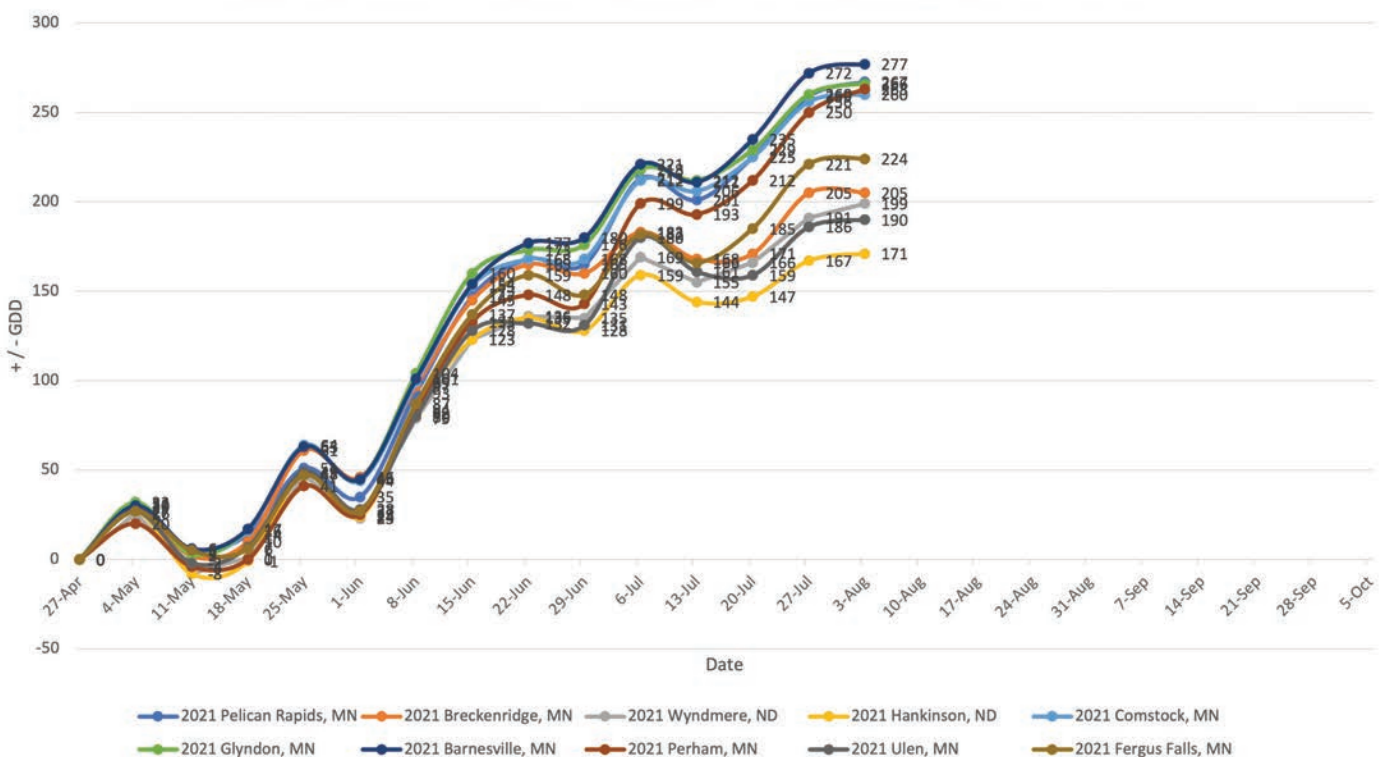
MIKE SORBY

701-238-3914
MIKES@PETERSONFARMSSEED.COM



GDU's

2021 West Central Minnesota and South East North Dakota Departure From Normal



WEEK OF AUGUST 5, 2021

TRAVIS WINTER EAST CENTRAL MN



WEEKLY NOTES

Small grains are all harvested in the area.

The corn silks have all browned up and are starting to fill. A few spots missed the shot of rain the other day and there are a lot of silage choppers starting to roam through those areas. The 96-day and 101-day corn are really shining this year.

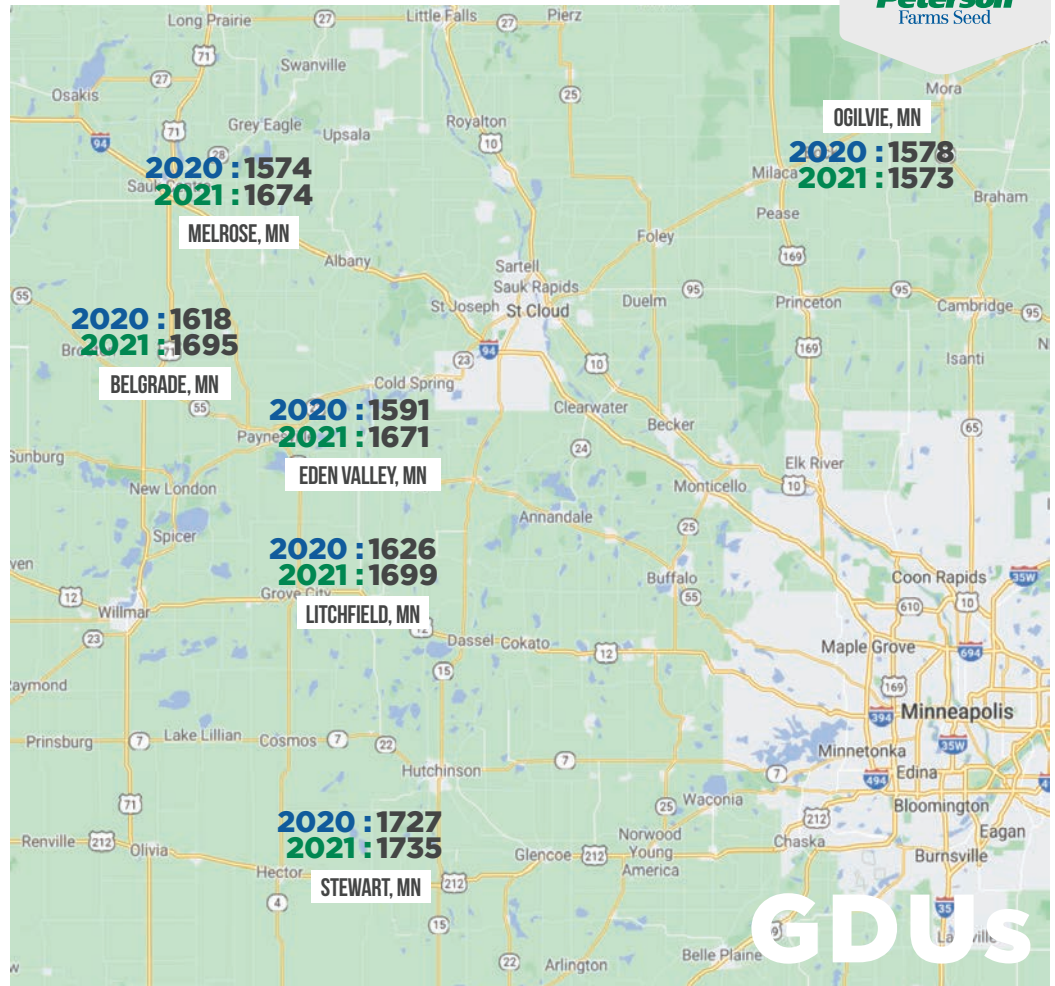
Soybeans are podding. Where they caught the rain, things are beautiful but we all will need another shot soon. We've seen pockets of aphids and mites but not a lot of pressure overall.



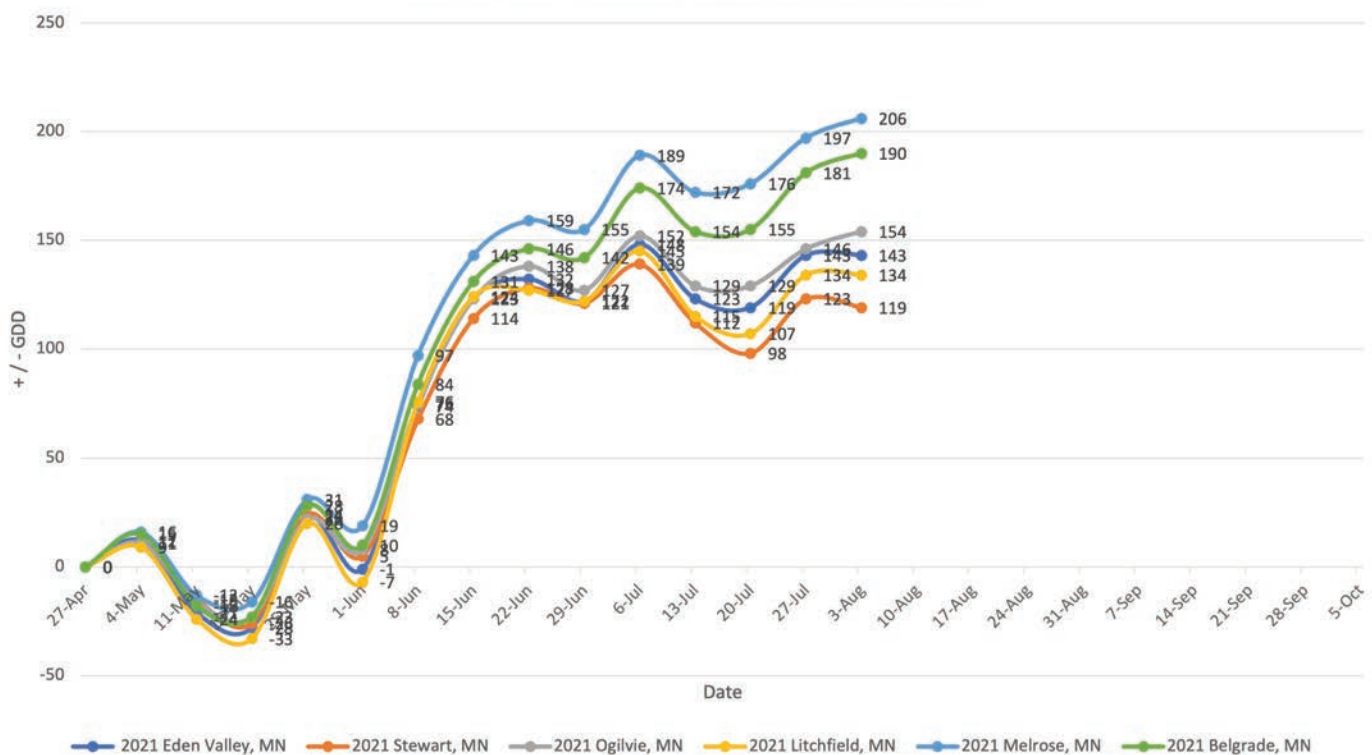
TRAVIS WINTER

320-290-4096

TRAVIS@PETERSONFARMSSEED.COM



2021 Central Minnesota Departure From Normal



WEEK OF AUGUST 5, 2021

PFS RETAIL LOCATIONS



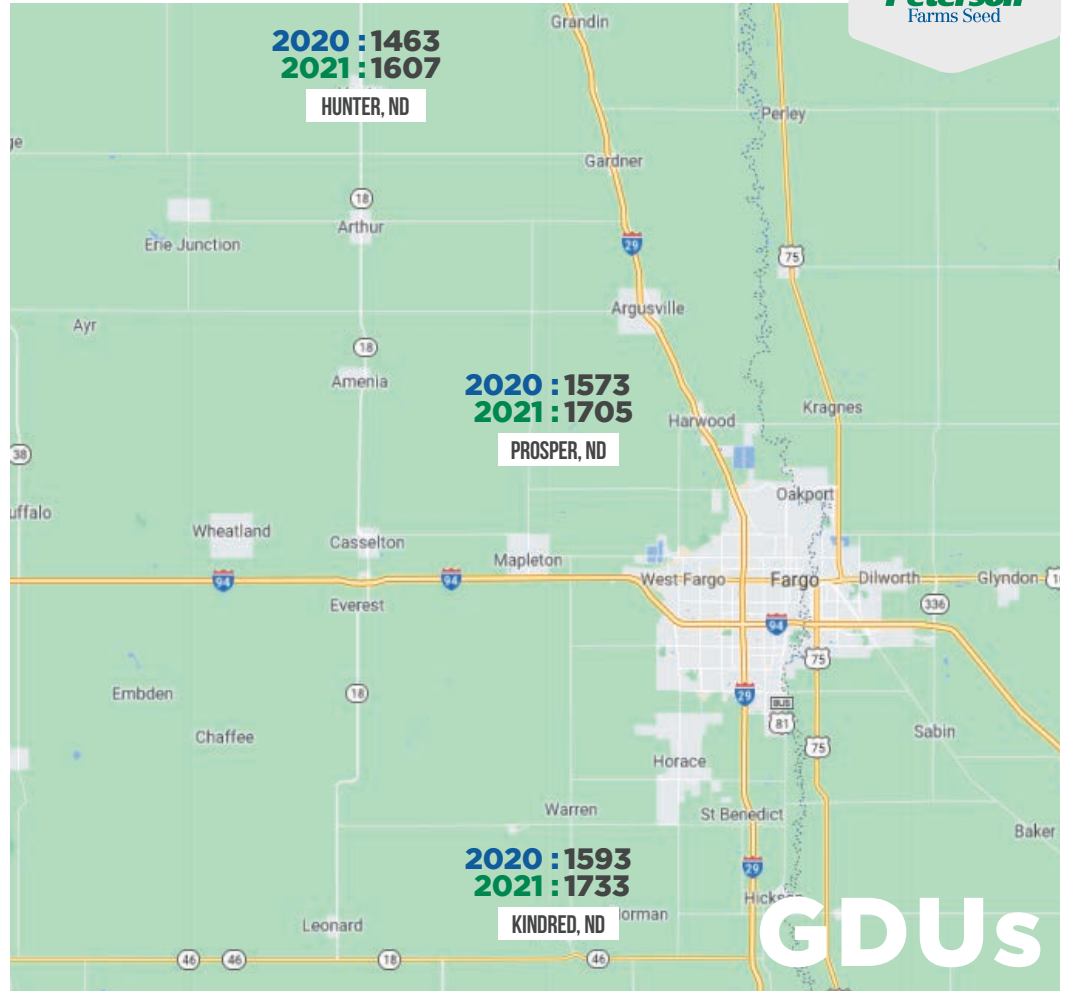
WEEKLY NOTES

Kindred: Wheat is mostly off in our area and ran better than expected. I haven't seen any dented corn yet but we are getting close on some early hybrids. We are still managing grasshoppers in the beans and finding a few bean leaf beetles that need to be sprayed.

Prosper: Wheat is about 75% done. Yields were a great surprise when the combines hit the field. Corn is mostly in the milk stage. Grasshoppers have wreaked havoc on the edges, even chewing silks off during pollination. Beans are somehow still making pods but the bottom of the plants are filling in nicely. Spider mites in some areas have been found in huge numbers. Bifenthrin is what I've seen working well. Q86 is looking exceptionally good with 18-20 around.

Hunter: Wheat yields are better than expected across the area! Crops are hanging on but we will need another rain soon to maintain yield. Some spraying for spider mites and grasshoppers around the area. We are not seeing much for aphids or corn borer.

KINDRED: JADE ALBRECHT
TYLOR JOHNSON
PROSPER: MICHAEL SHUTT
DREW RODEN
HUNTER: KAEVIN KYLLO
TROY WIEGANDT
701-282-7476



GDU's

2021 PFS Locations Departure From Normal

