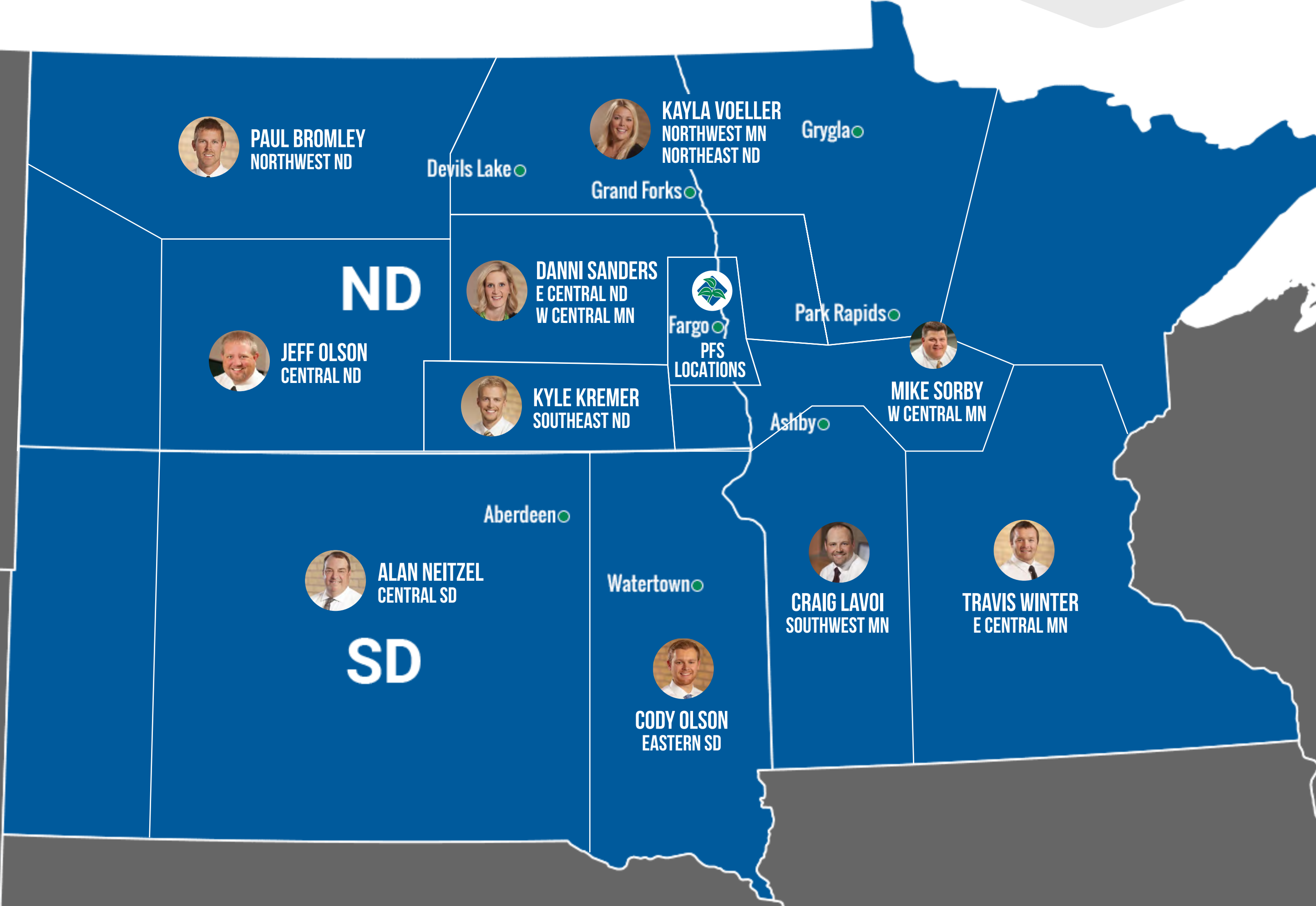


CLICK ON AN AREA OF THE MAP TO SEE GDU INFORMATION FOR THE WEEK OF SEPT. 14



WEEK OF SEPT. 14, 2021

CODY OLSON EASTERN SD



WEEKLY NOTES

Early soybeans are being harvested as we speak!

Silage harvest is mostly done with just a few farmers working on finishing up.

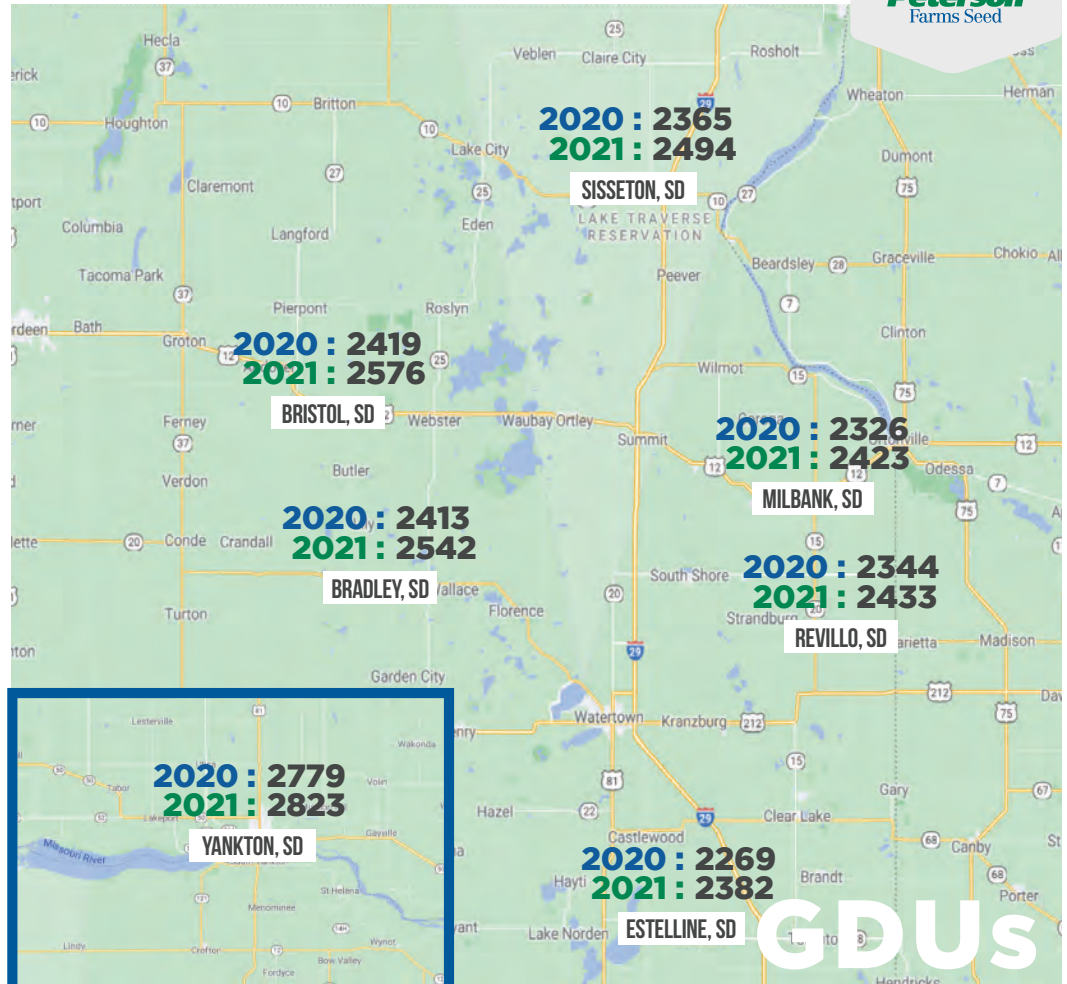
High-moisture corn harvest has started. 75T99 is really looking great going into harvest!



CODY OLSON

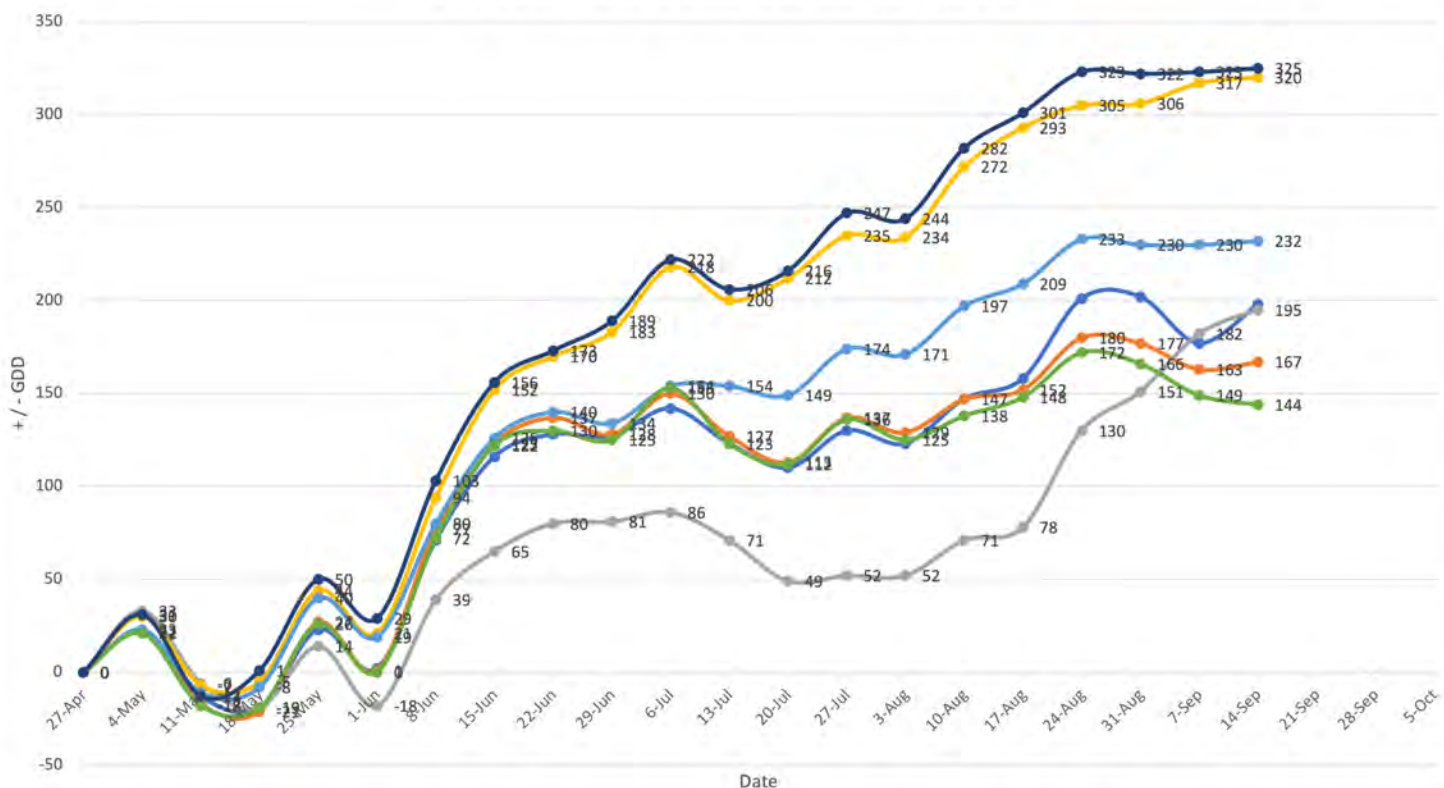
605-929-5688

CODYO@PETERSONFARMSSEED.COM



GDU

2021 Eastern South Dakota Departure From Normal



WEEK OF SEPT. 14, 2021

DANNI SANDERS

EAST CENTRAL ND
WEST CENTRAL MN



WEEKLY NOTES

Harvest is expected to really start later this week on both corn and soybeans.

With the dry soybeans and top die-back, most growers are putting together a plan of attack on what to start first.

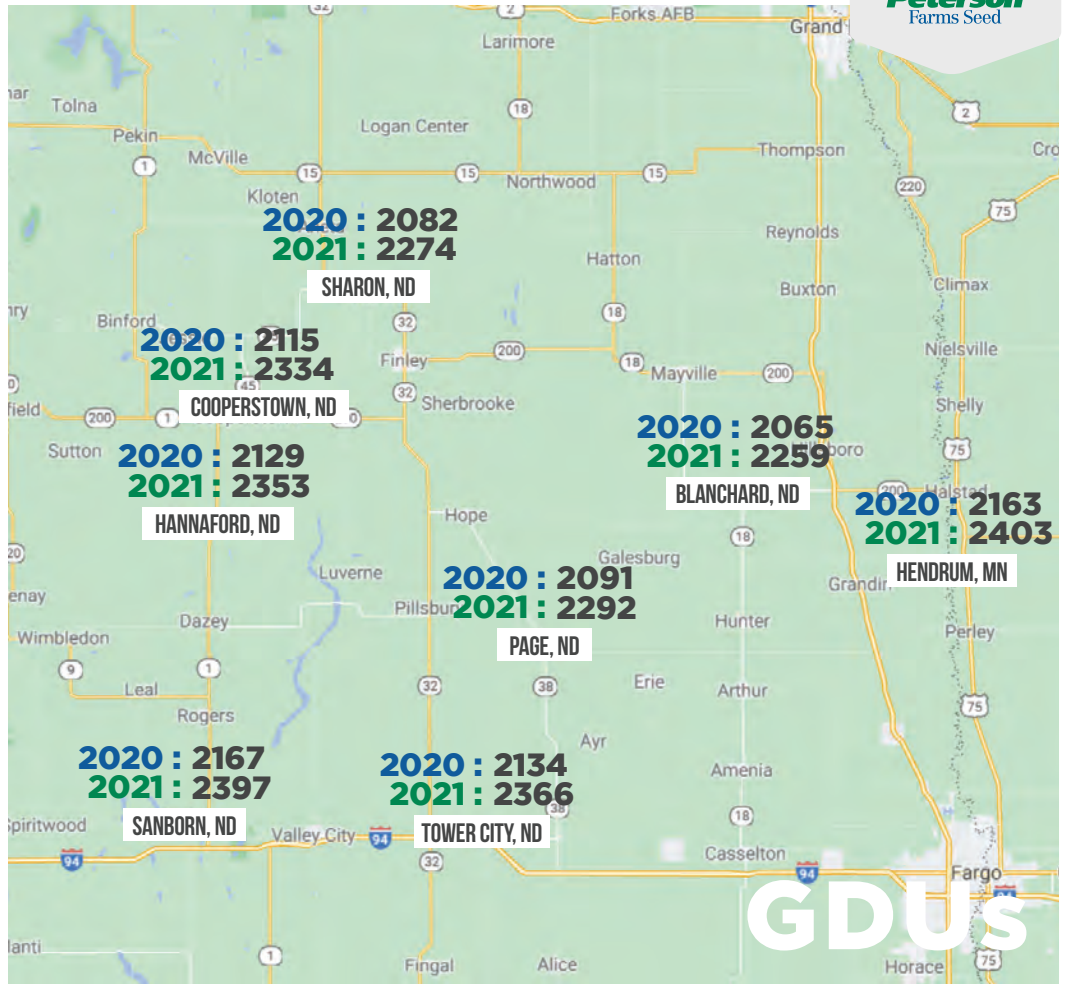
Our 75G85, 73S84 and 74J89 corn hybrids all look solid, as well as our 19EN04 and 2106E Enlist beans also look really nice. Farmers in my area are really excited to see how the new XtendFlex beans come off, too!



DANNI SANDERS

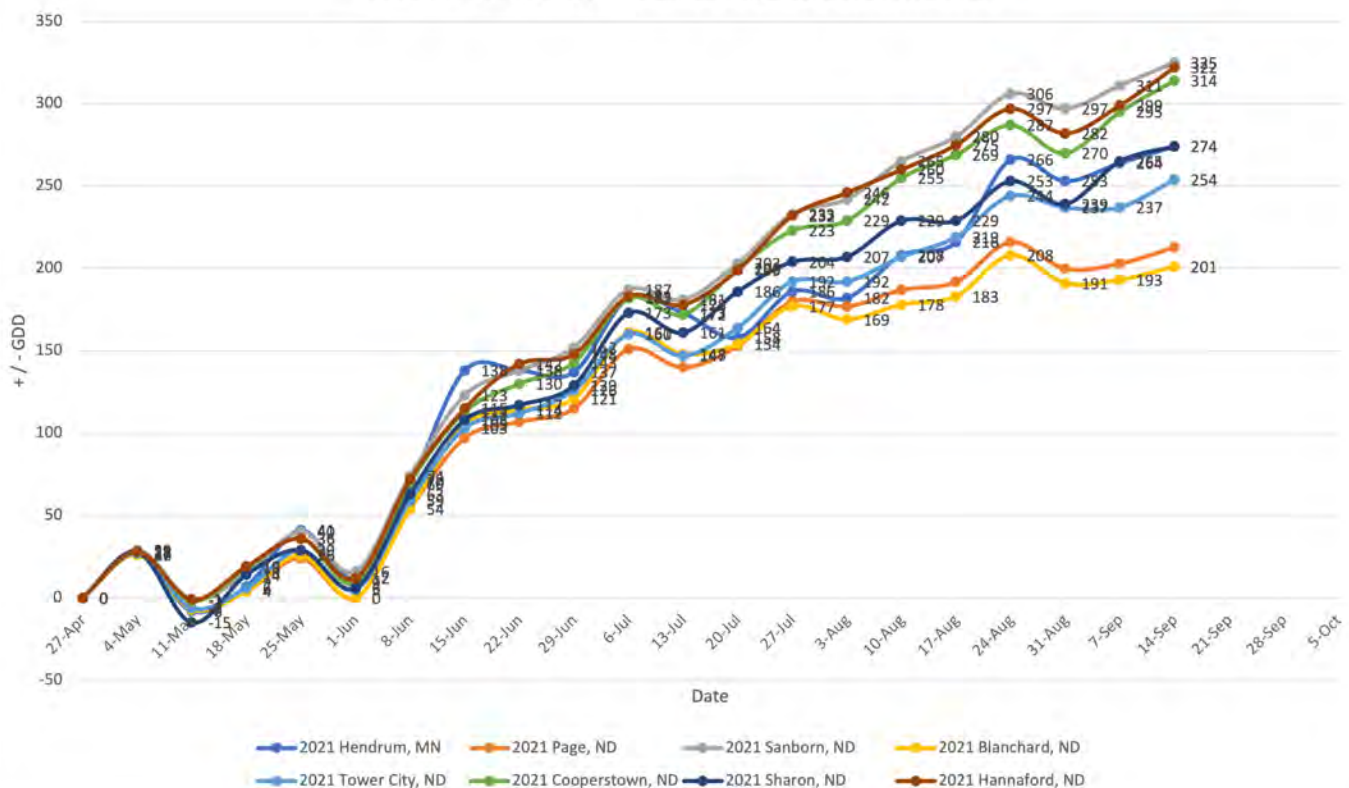
701-371-1712

DANNI@PETERSONFARMSSEED.COM



GDU

2021 East Central North Dakota Departure From Normal



WEEK OF SEPT. 14, 2021

JEFF OLSON CENTRAL ND



WEEKLY NOTES

A lot of area corn fields have been chopped for silage in the last 30 days.

Many growers are saying that wheat, corn and bean yields will be extremely variable based on small showers that hit specific fields within the same farm.

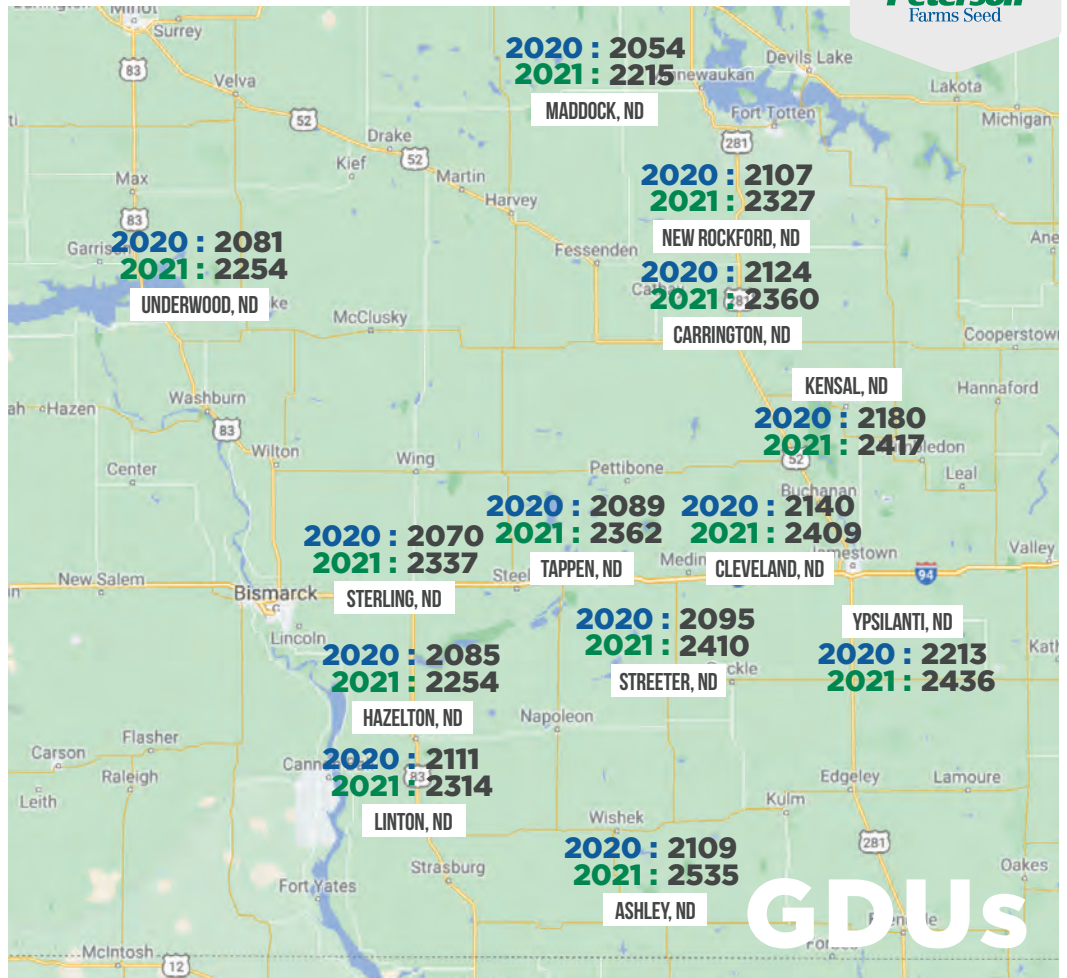
I have had a lot of comments that beans and corn have "greened up" after the rains we have received in the last two weeks.



JEFF OLSON

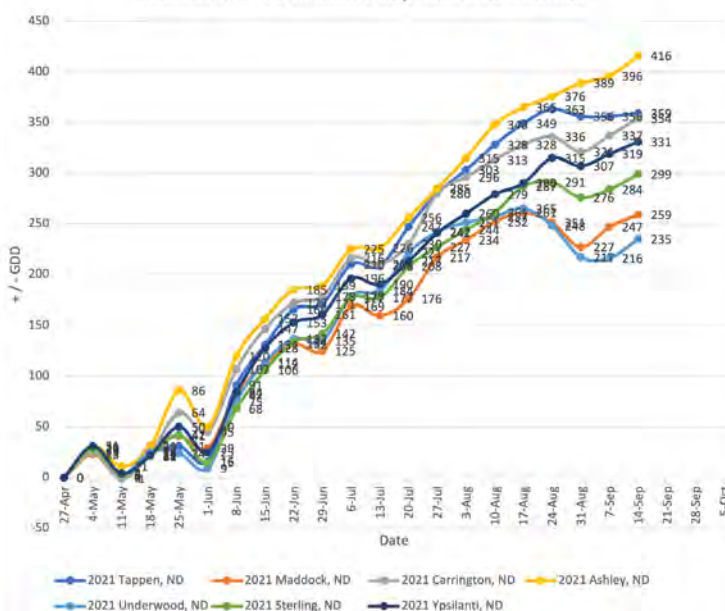
701-659-3246

JEFF@PETERSONFARMSSEED.COM

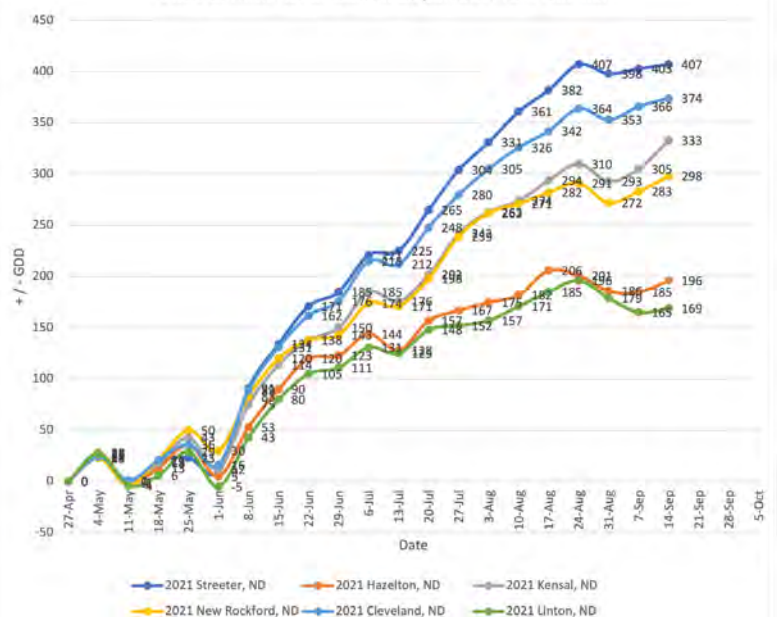


GDU

2021 Central North Dakota Departure From Normal



2021 Central North Dakota Departure From Normal



WEEK OF SEPT. 14, 2021

KYLE KREMER SOUTHEAST ND



WEEKLY NOTES

A few soybeans and corn have been cut this week with extreme yield variability, as expected.

Corn moisture is anywhere from 22-34% depending on location and maturity.

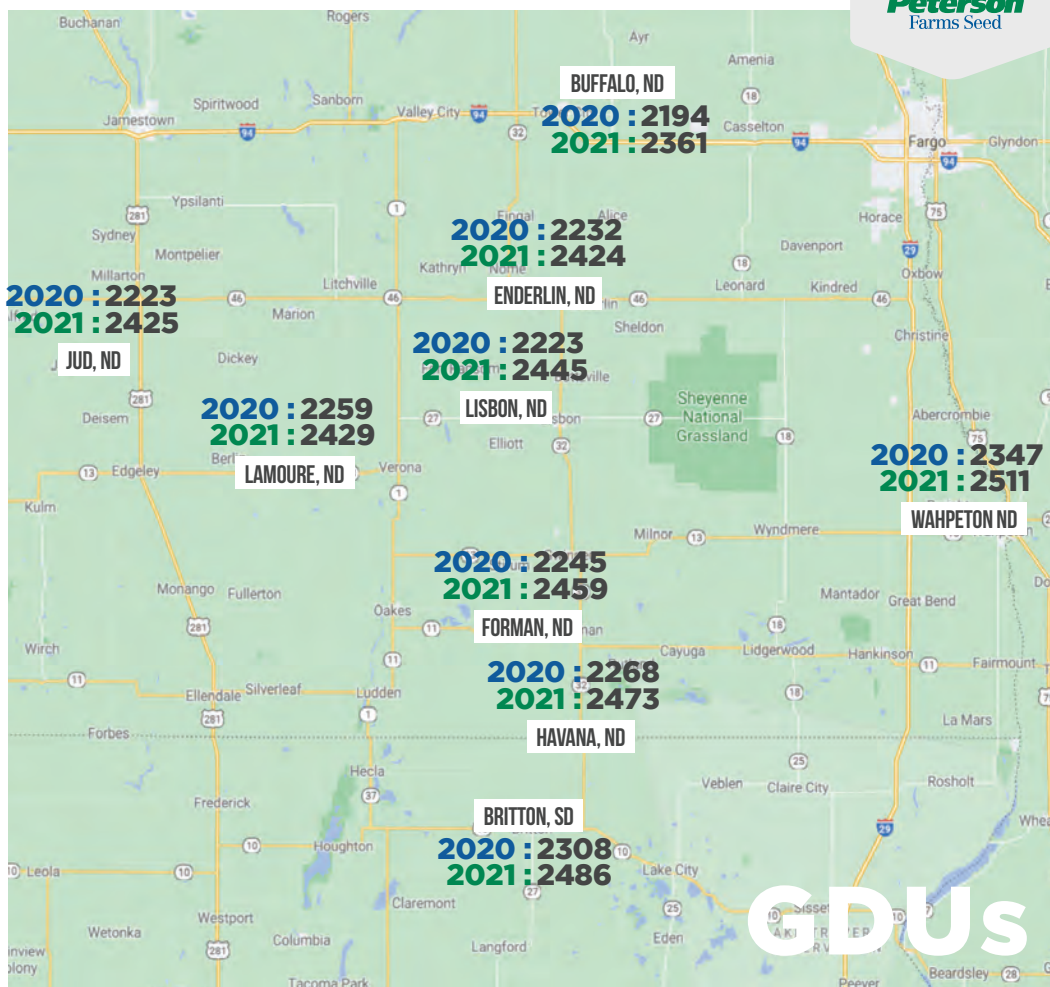
This is a perfect year for evaluating late season plant health and standability in corn. Hot temperatures this weekend will really push the crop to harvest.



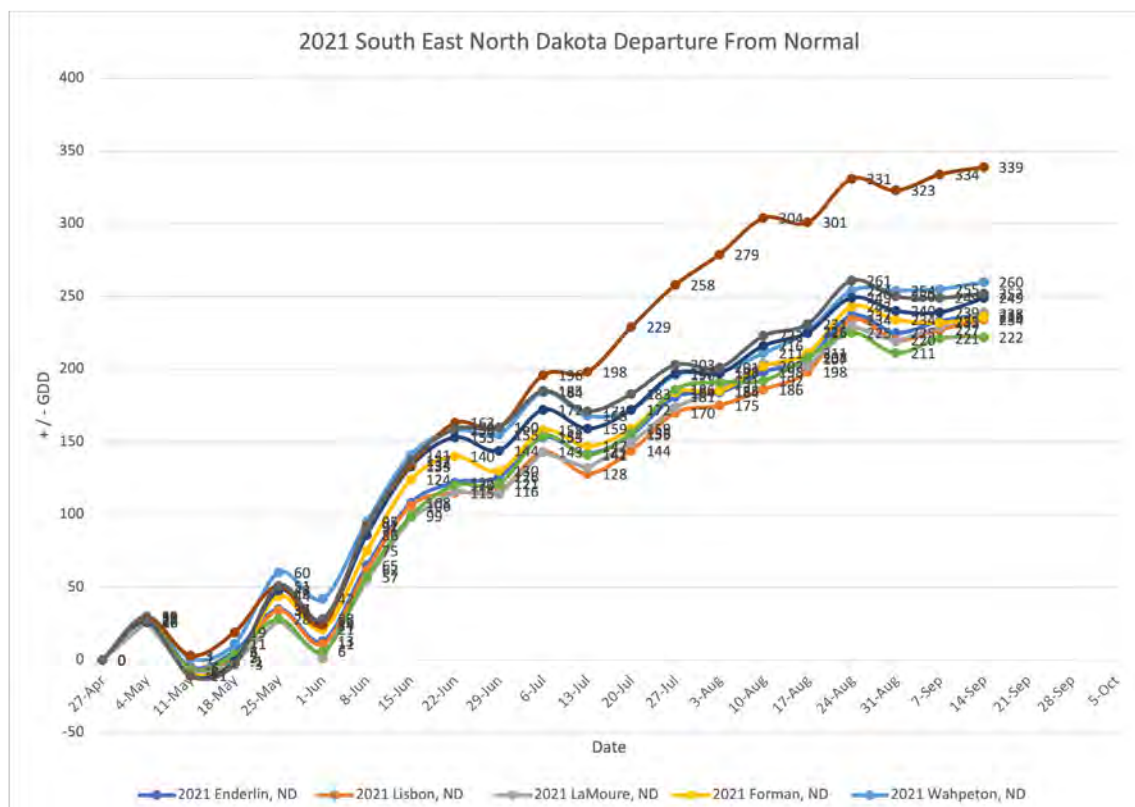
**KYLE
KREMER**

701-809-4490

KYLE@PETERSONFARMSSEED.COM



GDU



WEEK OF SEPT. 14, 2021

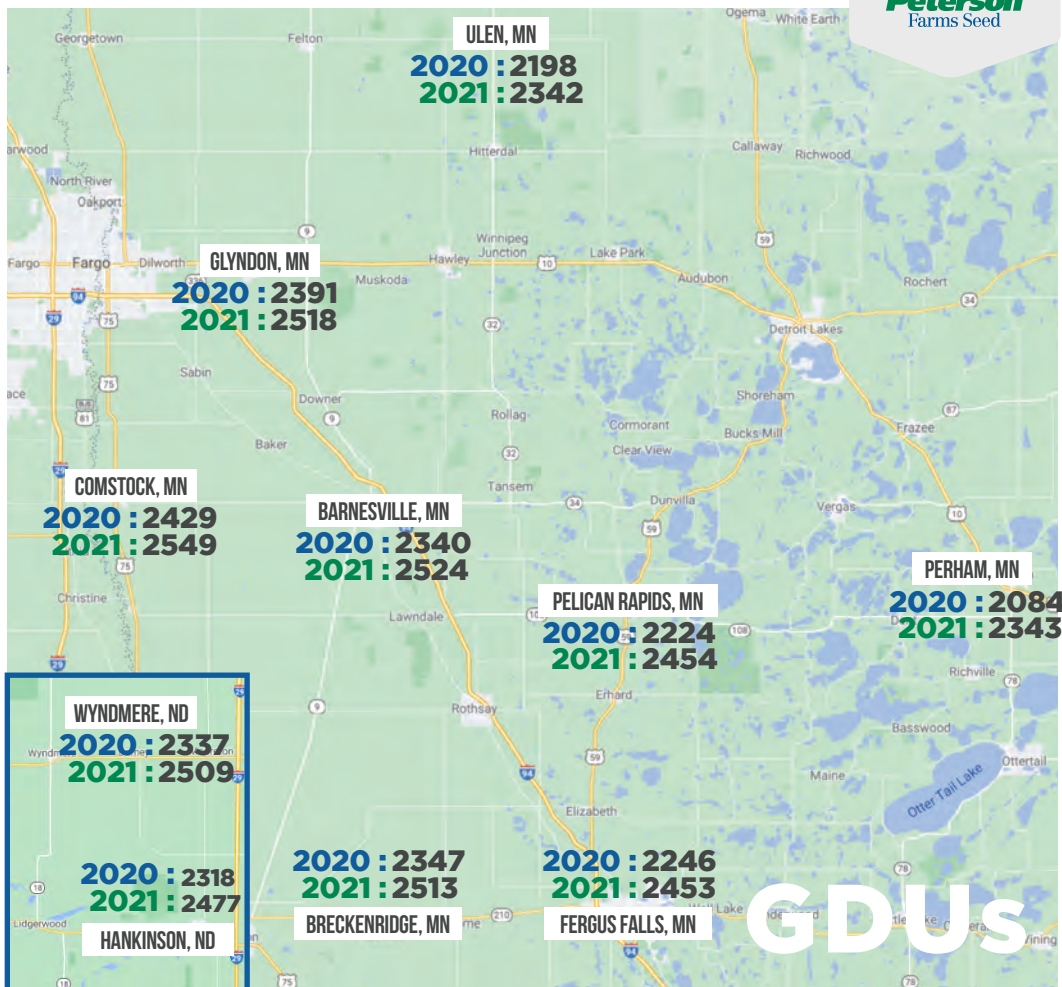
MIKE SORBY WEST CENTRAL MN



WEEKLY NOTES

Both corn and soybean harvest has begun with yields and moisture all over the board depending on rain.

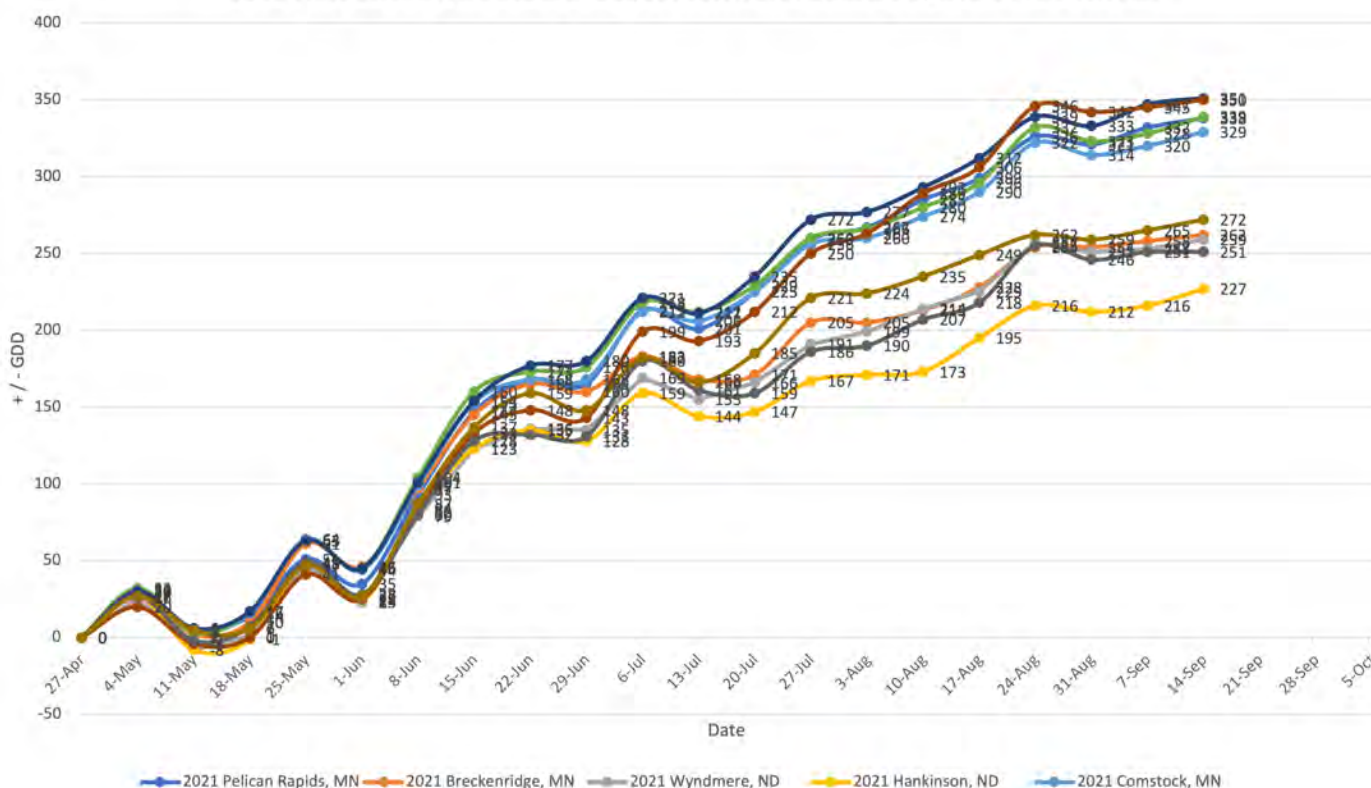
Some stalks on the corn have rotted out and started to lay down with the winds we had. The moisture is from 18% up to the high 20's.



MIKE SORBY

701-238-3914
MIKES@PETERSONFARMSSEED.COM

2021 West Central Minnesota and South East North Dakota Departure From Normal



WEEK OF SEPT. 14, 2021

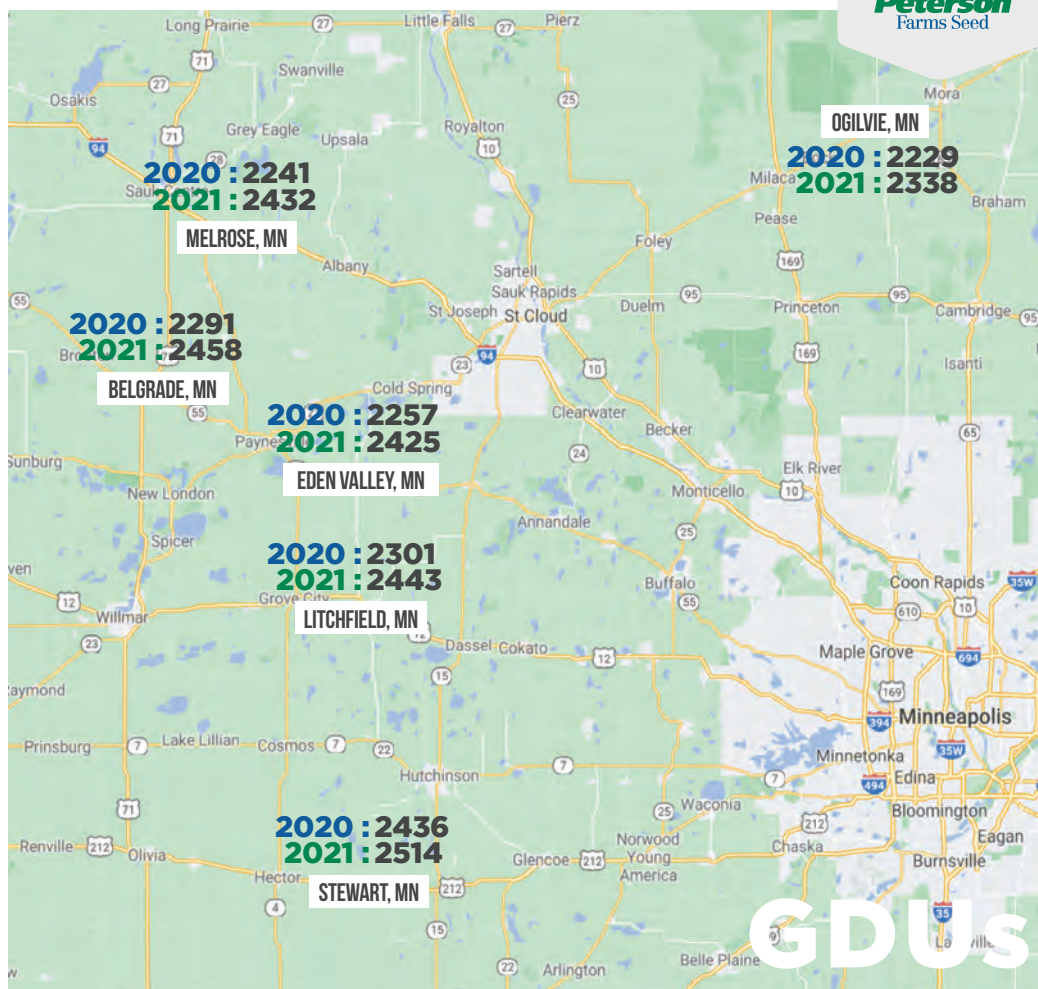
TRAVIS WINTER EAST CENTRAL MN



WEEKLY NOTES

Combines have started rolling in my territory! Farmers haven't been too disappointed with their beans in areas that were still green when we started getting rain.

The dry, stressed corn is having issues so we are encouraging growers to stay vigilant in monitoring their crop and hope the wind stays away until after harvest. Although, 76Y96 and 72A91 are still standing like picket fences which is great to see!



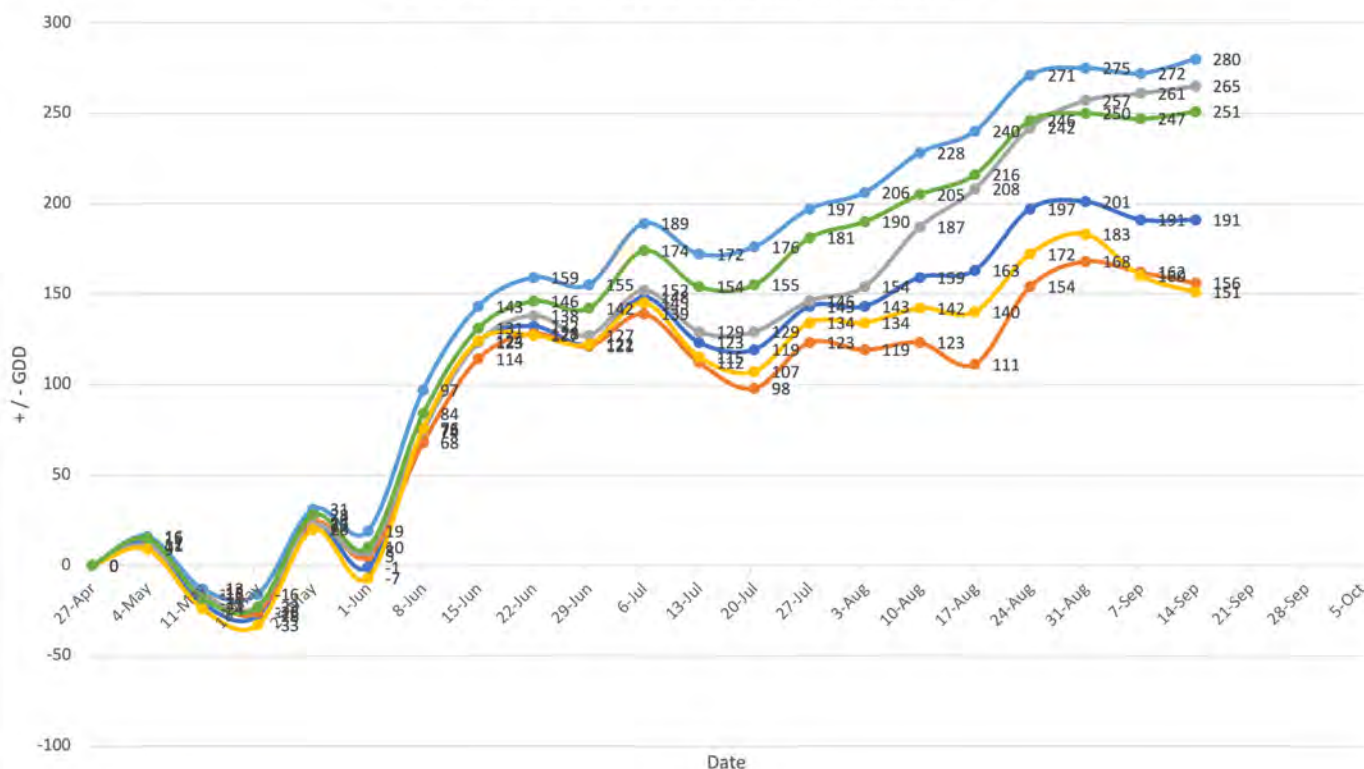
TRAVIS
WINTER

320-290-4096

TRAVIS@PETERSONFARMSSEED.COM

GDU

2021 Central Minnesota Departure From Normal



WEEK OF SEPT. 14, 2021

PFS RETAIL LOCATIONS



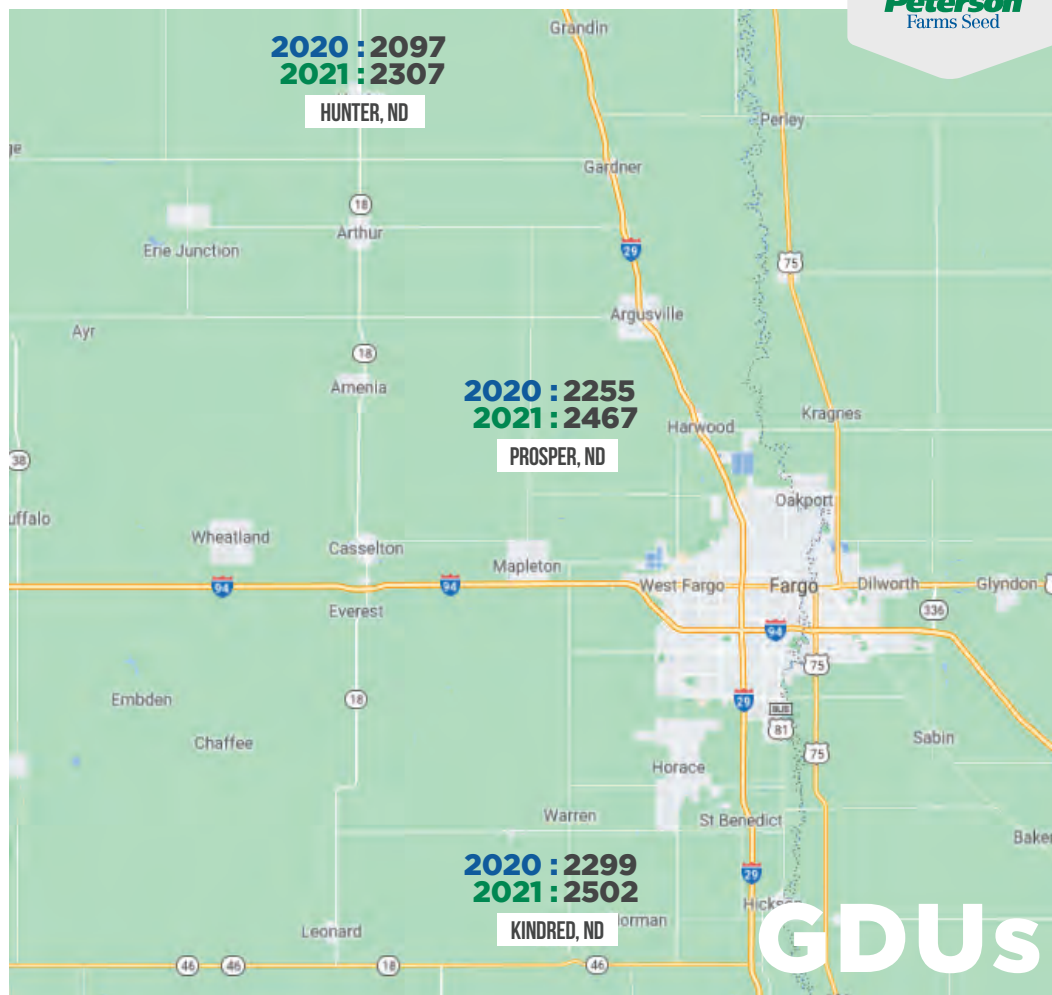
WEEKLY NOTES

Kindred: Our corn just started coming off this week for some very sandy fields. 74J89 and 72A91 were running 170-190 bu/A with 22% moisture. Stalk integrity looks to be a serious concern so monitoring/staging is key. Some beans in the area came off at 20-30 bu/A and extremely dry at 10% moisture. Most of the soybeans are a good 2 weeks out with uneven stand.

Prosper: We are starting to pick away at soybeans with some running 20-30 bu/A. We do expect to take some corn off this week and have similar concerns to all areas about stalk integrity.

Hunter: There's been a couple people going on corn. We've found sandier areas dropping some of the nubbin cobs so everyone should be on top of those fields. Early beans are coming off and ranging from 20-38 bu/A.

KINDRED: JADE ALBRECHT
TYLOR JOHNSON
PROSPER: MICHAEL SHUTT
DREW RODEN
HUNTER: KAEVIN KYLLO
TROY WIEGANDT
701-282-7476



2021 PFS Locations Departure From Normal

