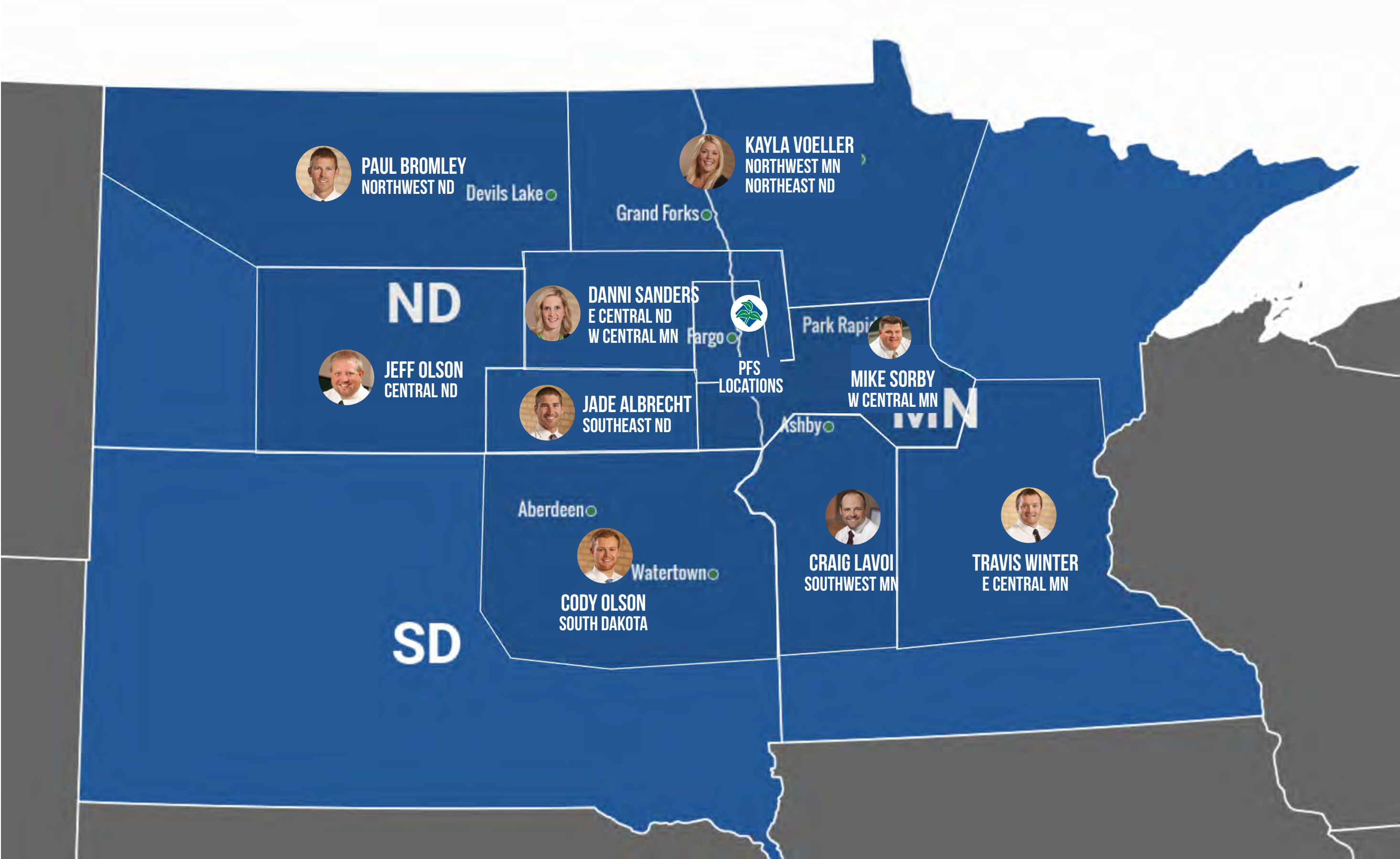


CLICK ON AN AREA OF THE MAP TO SEE GDU INFORMATION FOR THIS WEEK



WEEK OF SEPT. 13, 2023

JEFF OLSON CENTRAL ND



WEEKLY NOTES

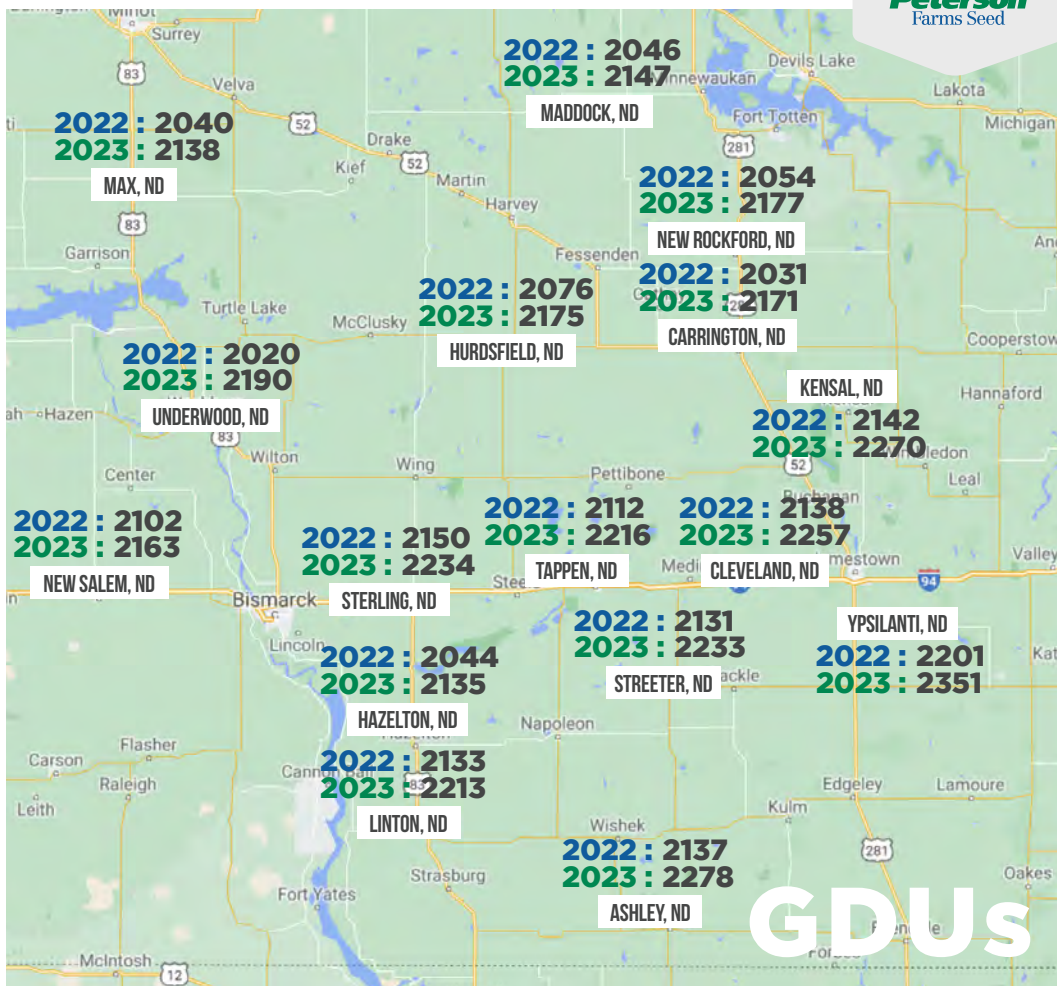
- There is still a small amount of wheat harvest to finish yet.
- Canola, edible bean, and pea harvest is well underway.
- Haven't been hearing of any soybean harvest reports, but they will be coming soon.



**JEFF
OLSON**

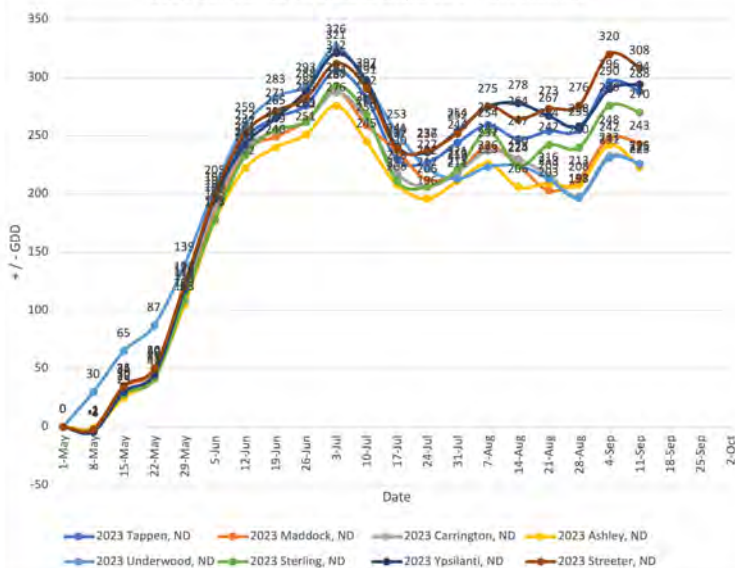
701-659-3246

JEFF@PETERSONFARMSSEED.COM

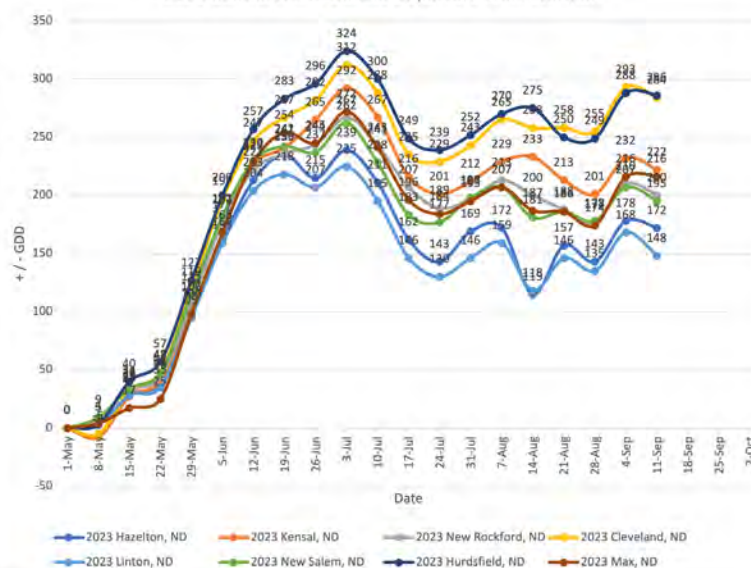


GDU

2023 Central North Dakota Departure From Normal



2023 Central North Dakota Departure From Normal



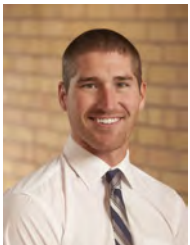
WEEK OF SEPT. 13, 2023

JADE ALBRECHT SOUTHEAST ND



WEEKLY NOTES

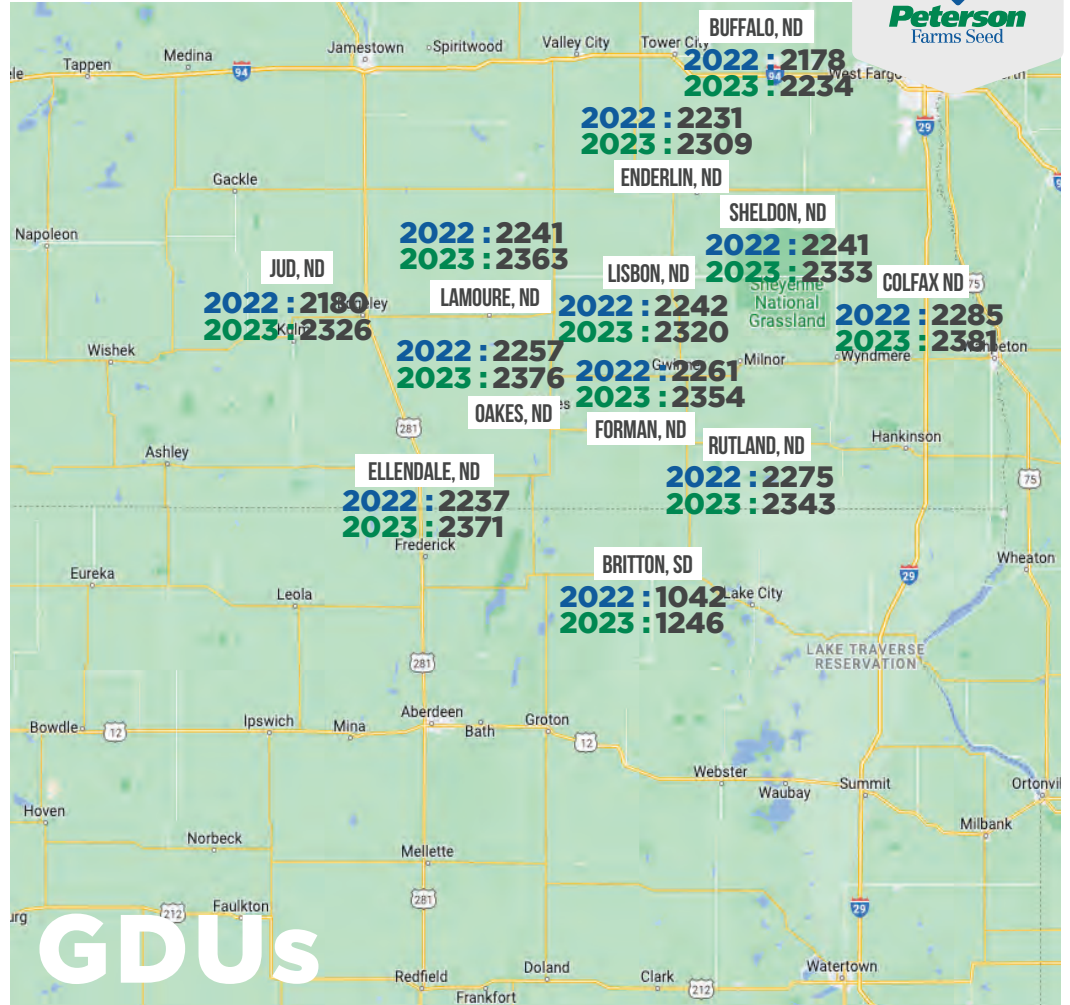
- There's silage coming off that's variable, but better than expected.
- A lot of soybeans are turning, but there will be corn coming off first for a few farms. Shanks and stalks are looking problematic in some areas, so there's corn scheduled to be picked and dried as soon as it black layers.



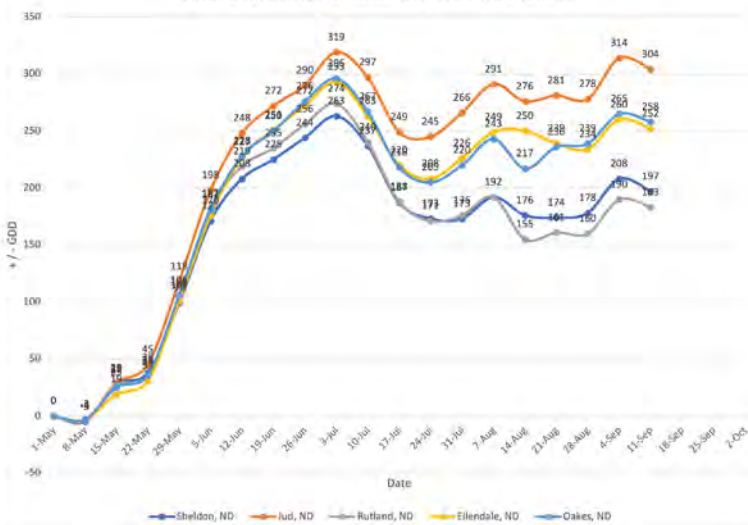
**JADE
ALBRECHT**

701-893-8170

JADE@PETERSONFARMSSEED.COM



2023 South East North Dakota Departure From Normal



2023 South East North Dakota Departure From Normal



WEEK OF SEPT. 13, 2023

MIKE SORBY WEST CENTRAL MN



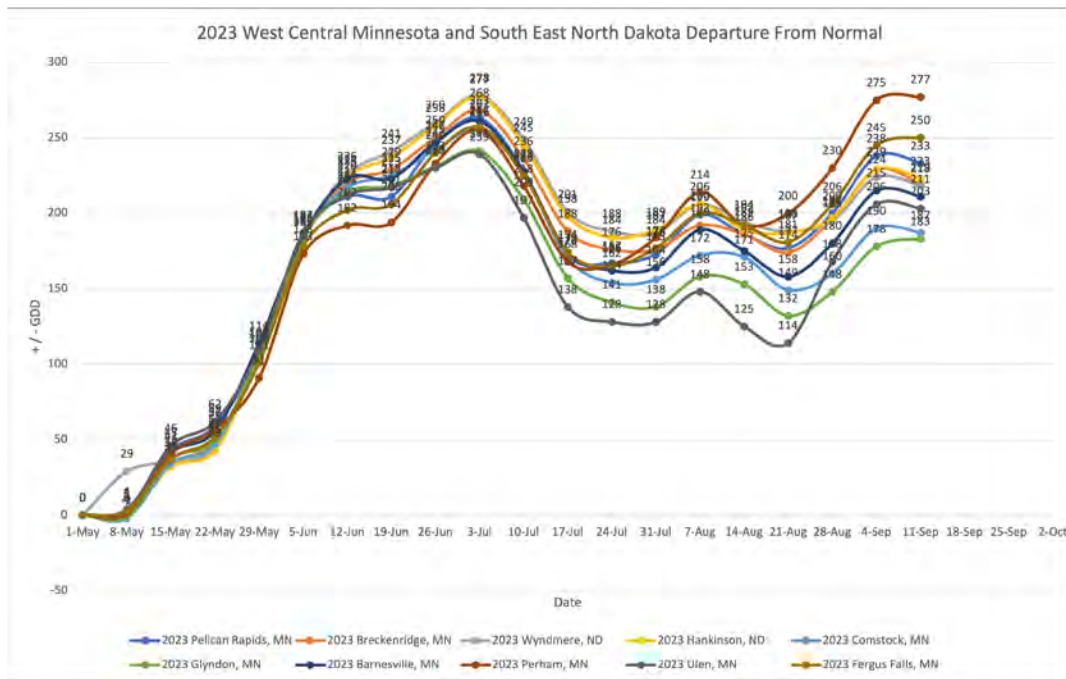
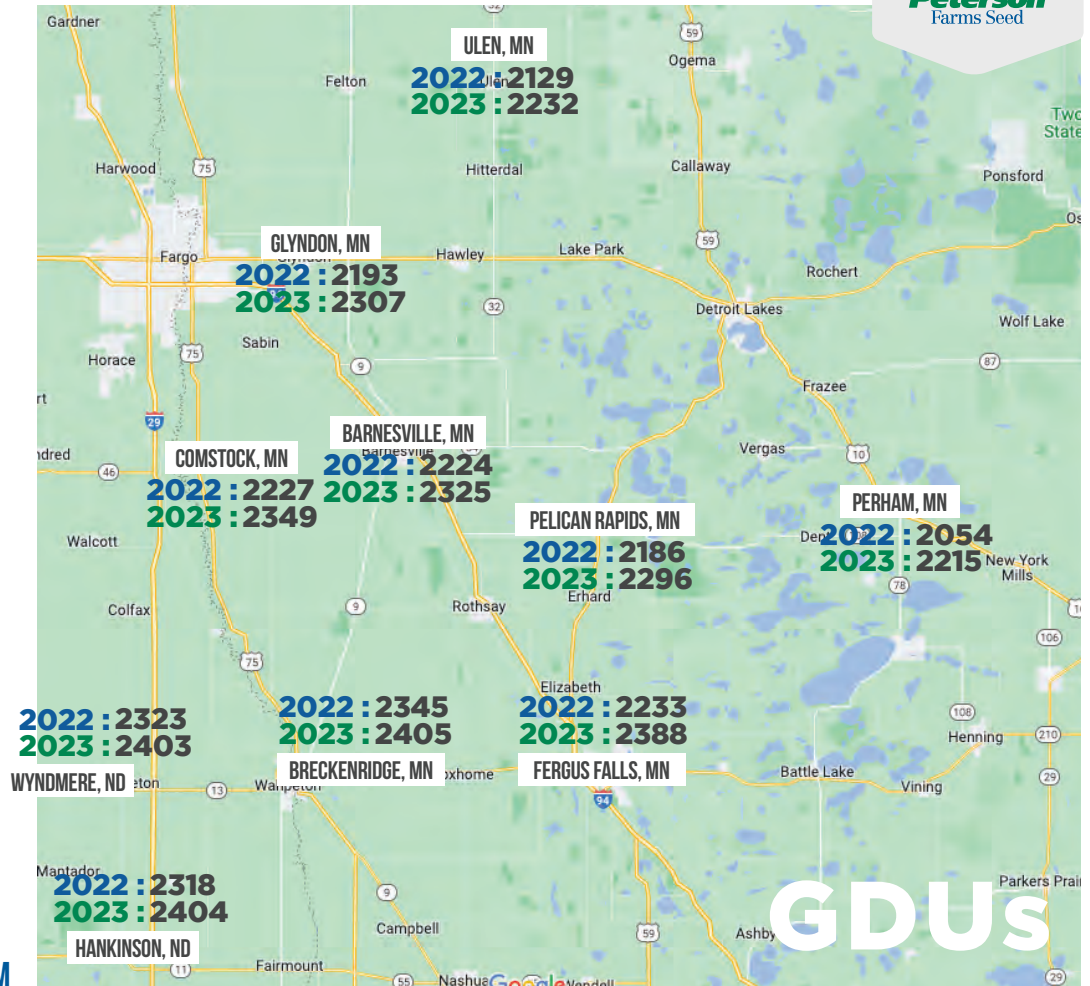
WEEKLY NOTES

- Wheat harvest is about wrapped up.
- Some early soybeans have been harvested.
- Guys are out checking stalk strength in their corn and it's looking acceptable for now.



MIKE SORBY

701-238-3914
MIKES@PETERSONFARMSSEED.COM



WEEK OF SEPT. 13, 2023

TRAVIS WINTER EAST CENTRAL MN



WEEKLY NOTES

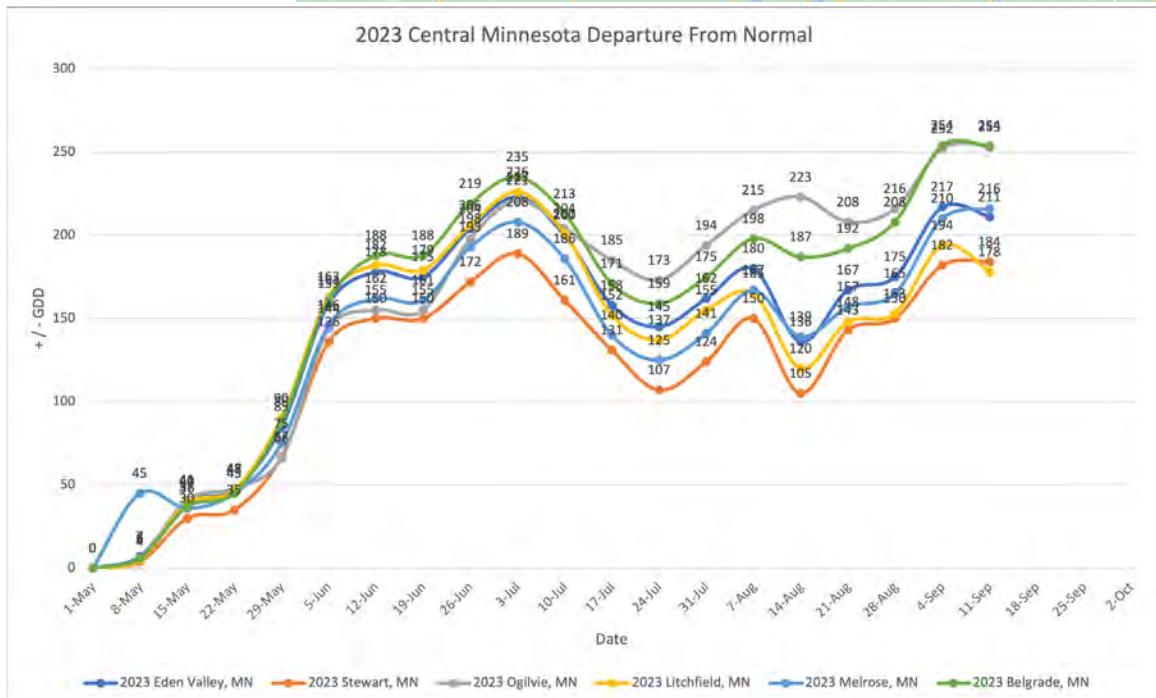
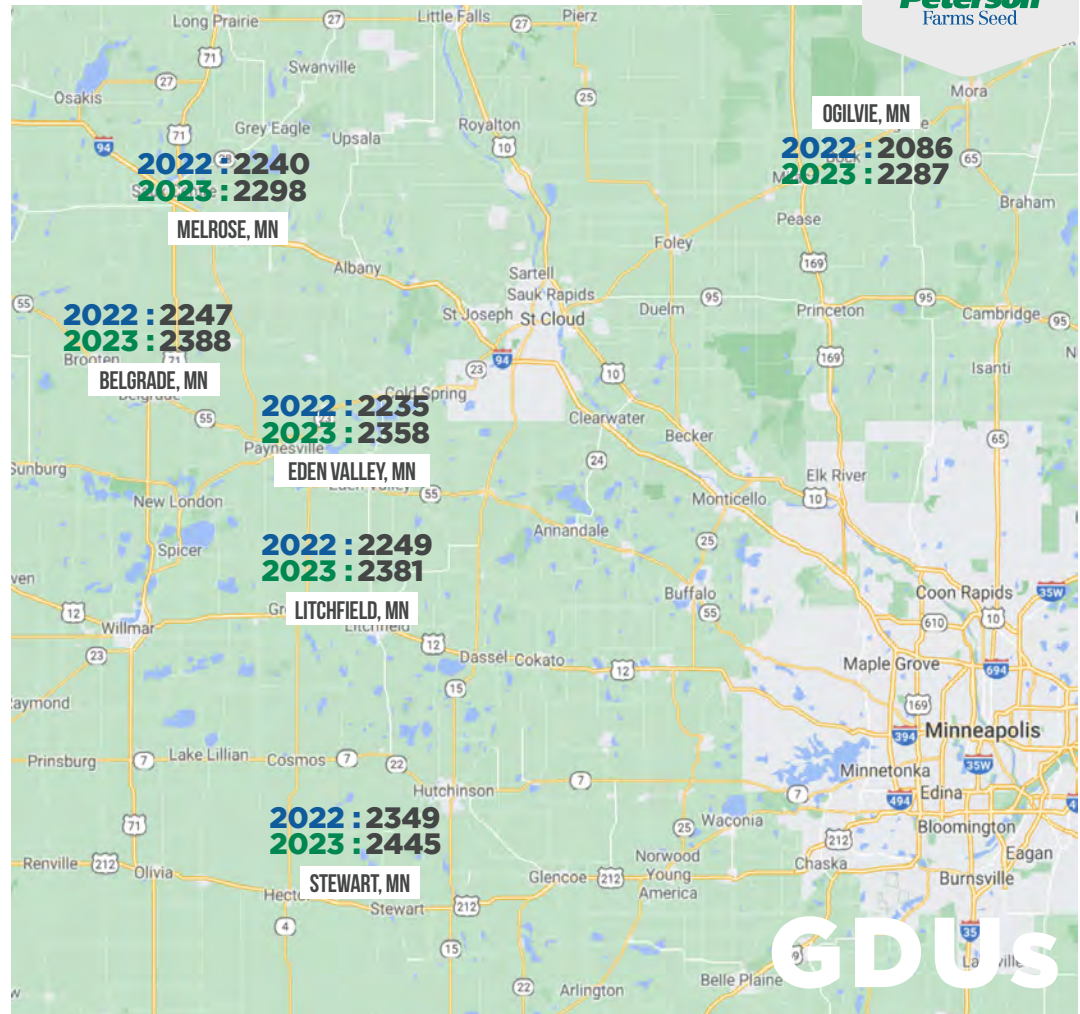
- Things are progressing fast!
- Corn chopping is either completed or in progress. A lot of corn has hit black layer with many plants are brown from the tassel to the ground. There's been some talk of corn harvest possibly happening in a week or two.
- Soybeans are turning fast as well. Most fields are holding on to a few yellow leaves, with a few greener spots scattered throughout.
- Not seeing any frost in the weather yet!



**TRAVIS
WINTER**

320-290-4096

TRAVIS@PETERSONFARMSSEED.COM



WEEK OF SEPT. 13, 2023

PFS LOCATIONS



WEEKLY NOTES

PROSPER

- Harvest is coming fast!

KINDRED

- All of the wheat in our area is off and tillage has begun.
- Soybeans and corn are progressing well. Beans are filling pods to the top very well.
- Corn is around 50-75% milk line stage.

HUNTER

- Row crop harvest is upon us with many fields of edibles coming off and a few soybean fields have been harvested. Early yields are on the average side, which was expected where the soybeans finished a little early.
- Corn is coming along fast now as well, with some hand shelled samples measuring moisture in the low 20s. Yields look to be holding on with nice looking kernel counts. Now we wait to see how kernel size/weight turns out.
- Anthracnose is becoming a concern on certain fields where stalks are more than likely going to be an issue. I would look into prioritizing harvest order by fields that have been hit worse than others. In some cases, waiting until beans are finished may be too late.

KINDRED: JADE ALBRECHT
TYLOR JOHNSON
PROSPER: MICHAEL SHUTT
DREW RODEN
HUNTER: KAELIN KYLLO
TROY WIEGANDT
701-282-7476

