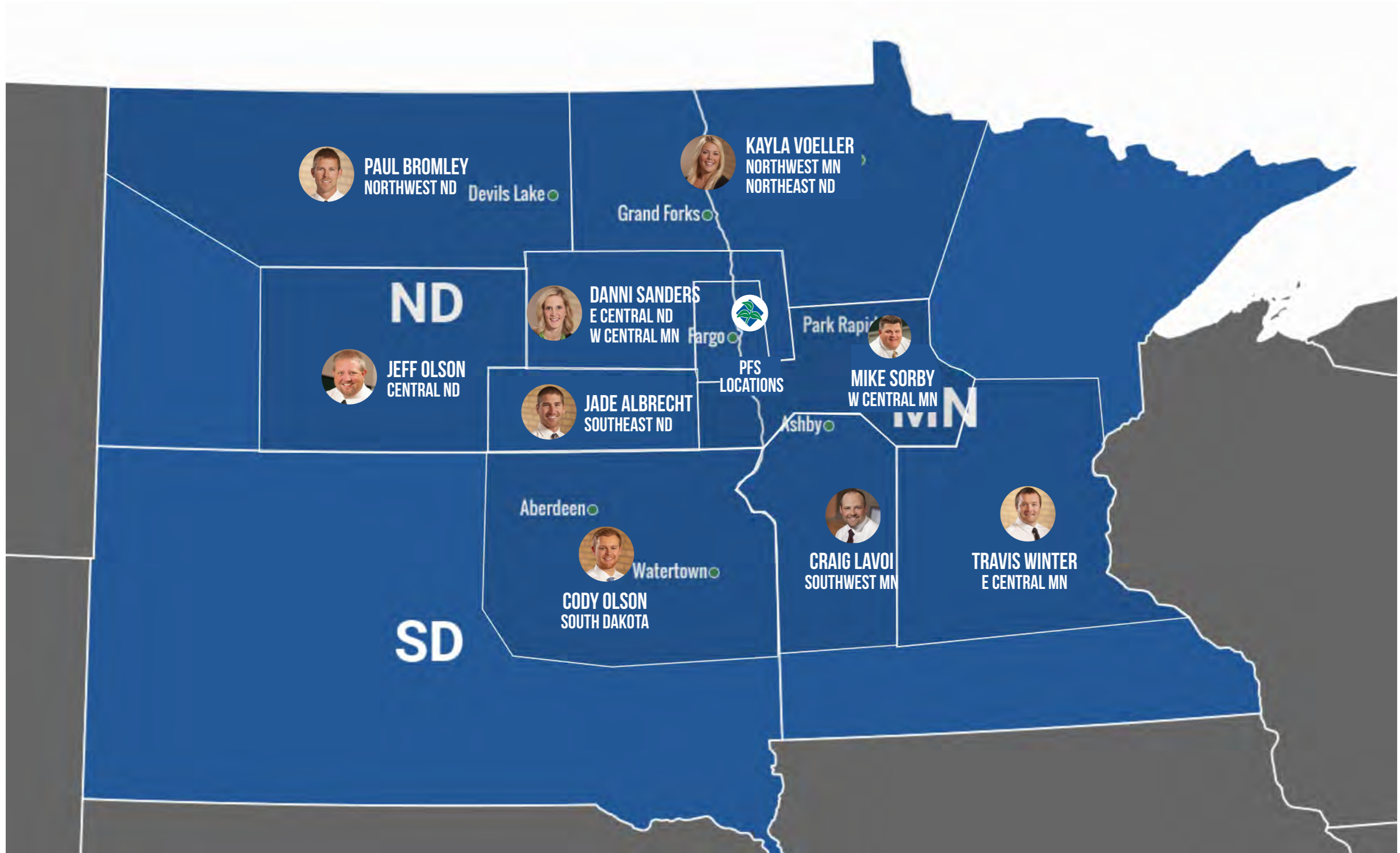


# CLICK ON AN AREA OF THE MAP TO SEE GDU INFO FOR THE WEEK OF SEPT. 30, 2024





## WEEKLY NOTES

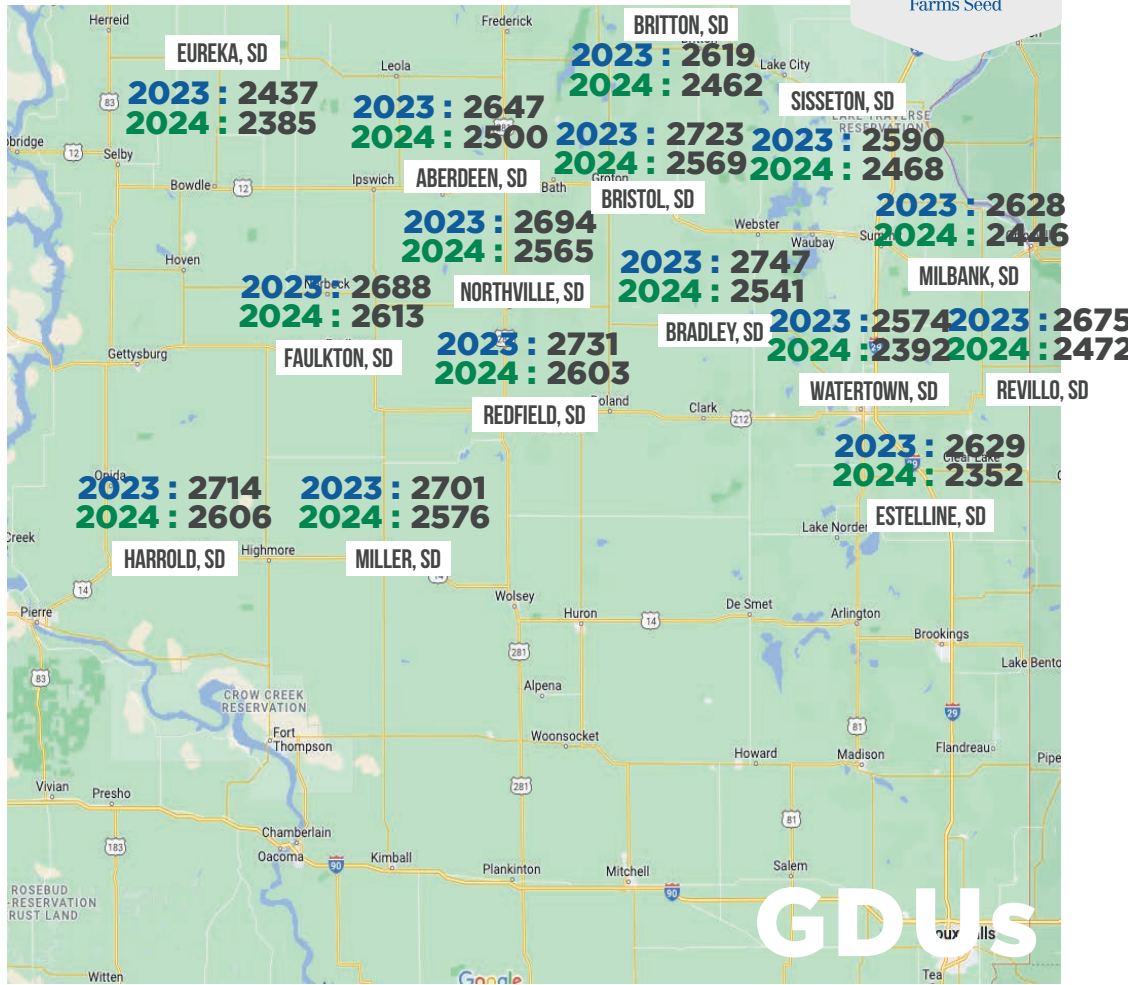
- Soybeans are in full harvest mode. We have many green stems, but dry pods. Many fields are coming off at 10-11%, sadly, but yields are doing good.
- Some corn is getting taken off, but right now growers are going after dry soybeans rather than corn that is still 20-22%.



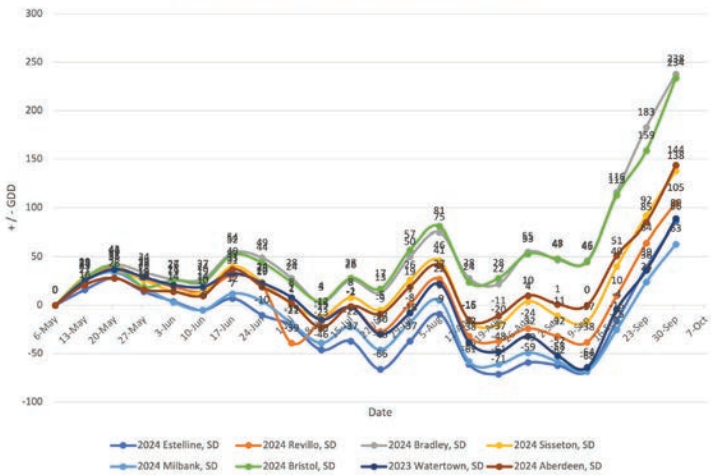
# CODY OLSON

605-929-5688

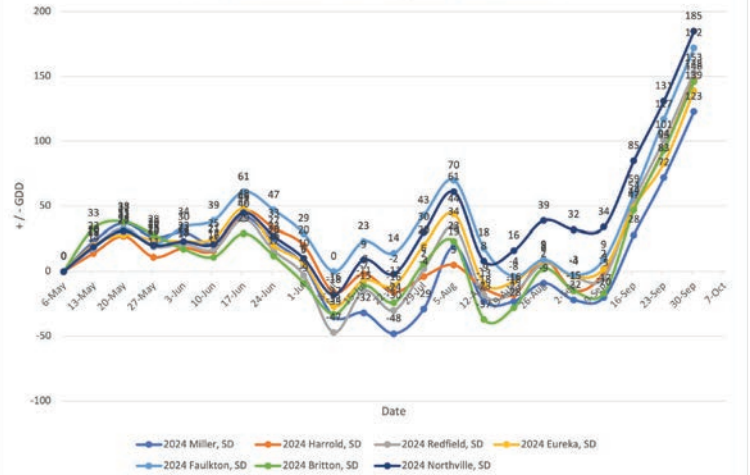
CODYO@PETERSONFARMSSEED.COM



2024 Eastern South Dakota Departure From Normal



2024 Central South Dakota Departure From Normal



# CRAIG LAVOI SOUTHWEST MN



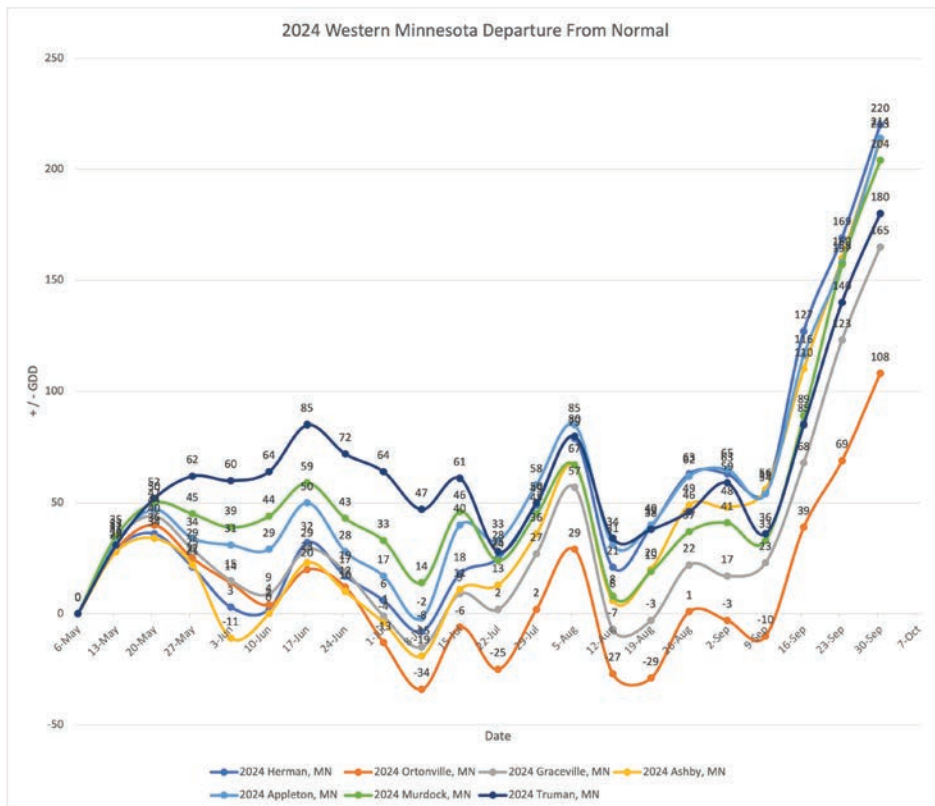
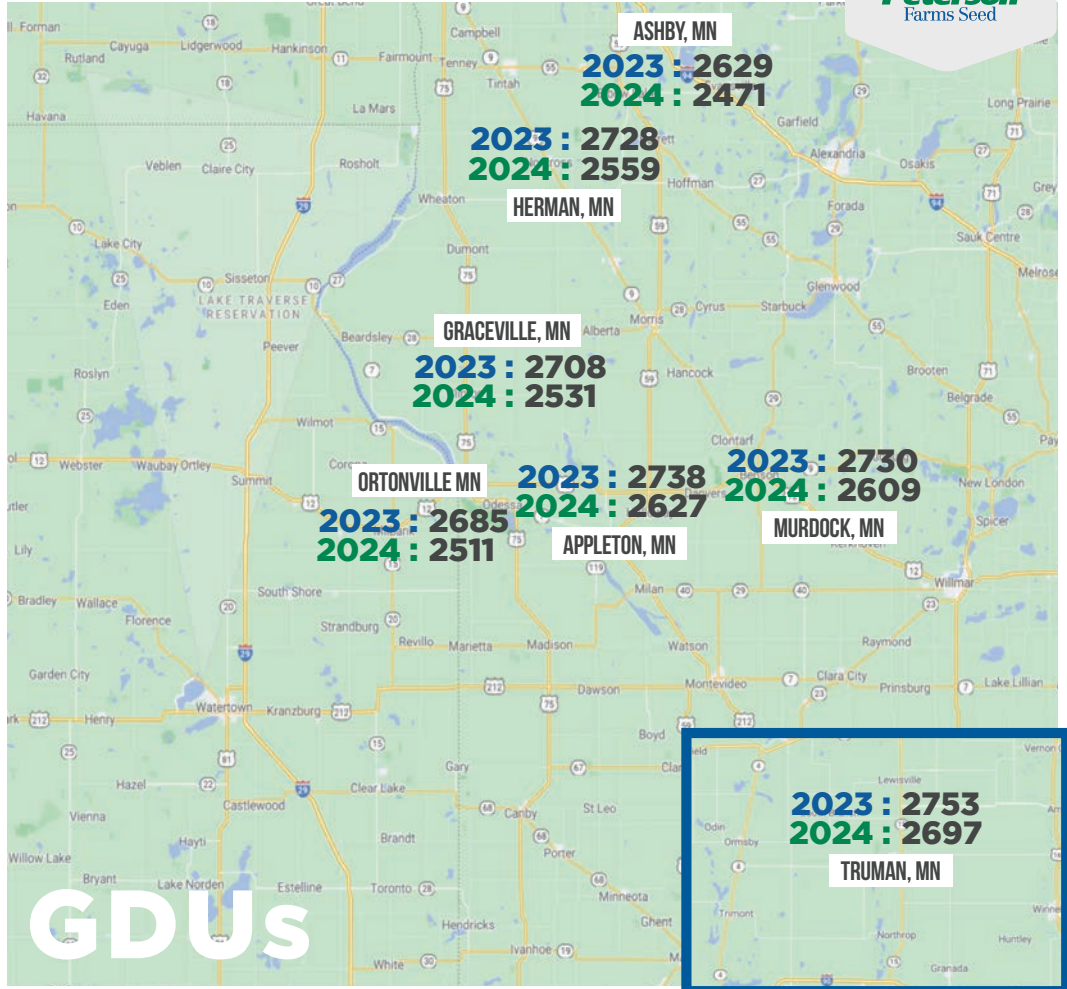
## WEEKLY NOTES

- Harvest is in full swing! Growers are rushing to get soybeans off as this heat has taken moistures down into the 8-9% moisture range in short order.
- Corn also is starting to come off in spots. I hand shelled and tested 74R89 Tuesday that was already down to 16.4% moisture. The few corn reports I have heard have been very promising from a yield standpoint.



**CRAIG LAVOI**

218-282-0791  
CRAIG@PETERSONFARMSSEED.COM





## WEEKLY NOTES

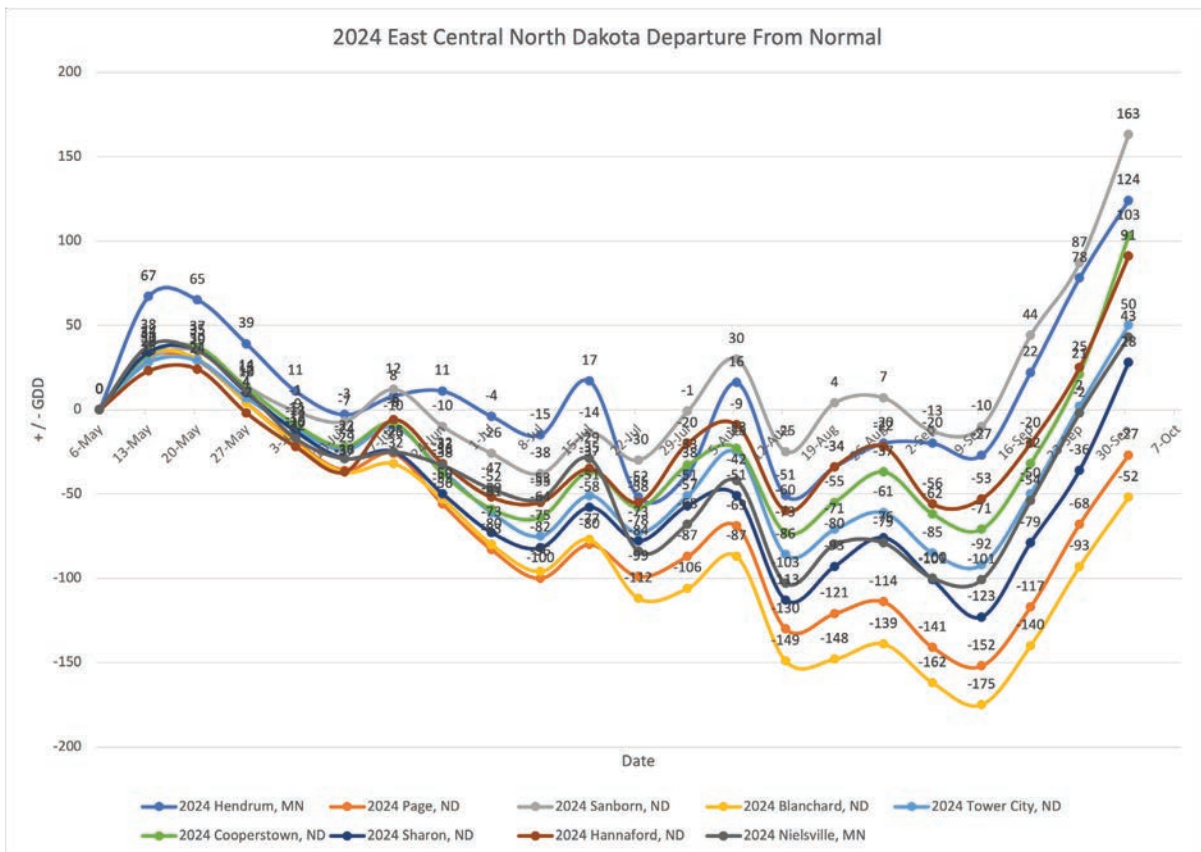
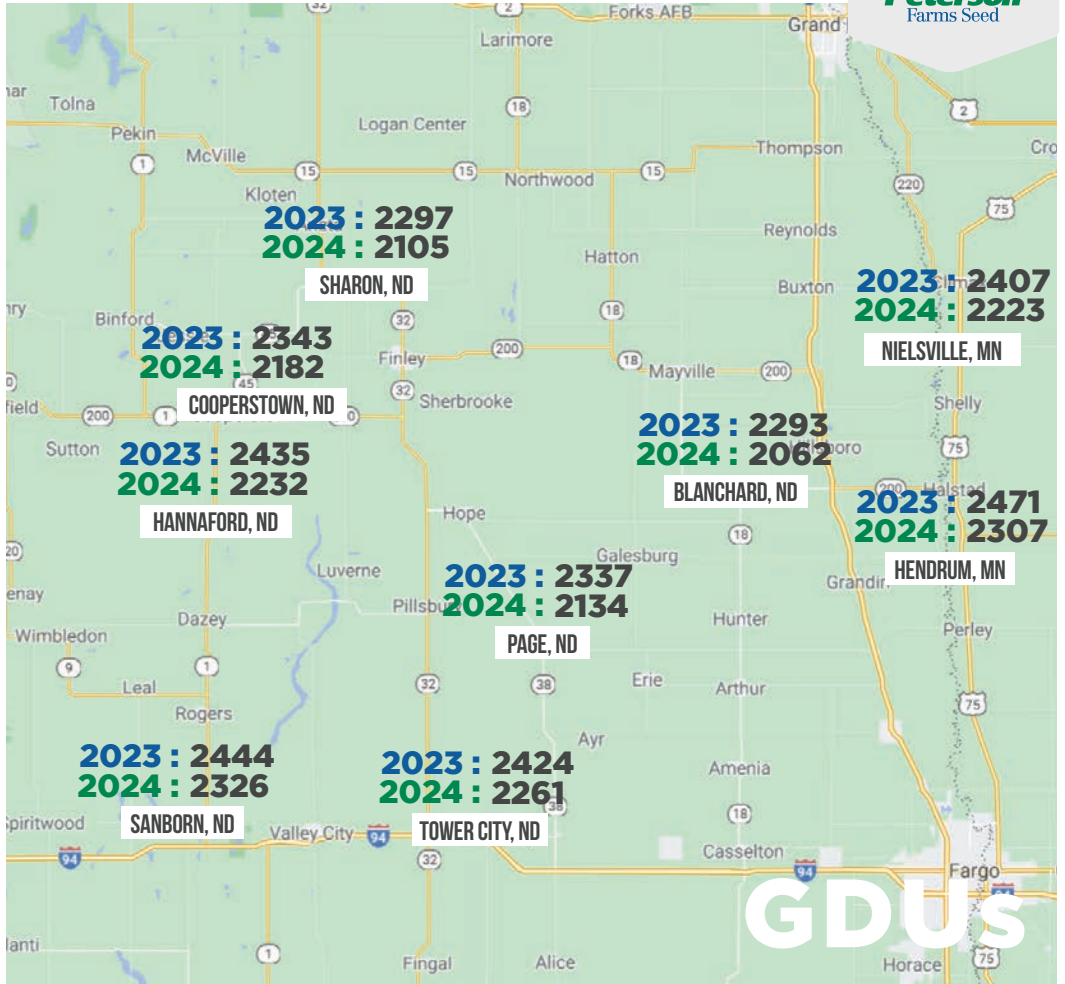
- Beans are coming off quickly. I'm hearing quite a bit of variation within fields. Green stems and leaves are hanging on, but the concern now is moisture. We're seeing some levels below 10%. With no frost in sight, it's better to get the beans off than wait for the plants to dry down.
- Corn is just getting started. Yields have been average to above average.



**DANNI SANDERS**

701-371-1712

DANNI@PETERSONFARMSSEED.COM



WEEK OF SEPT. 30, 2024

# JADE ALBRECHT SOUTHEAST ND



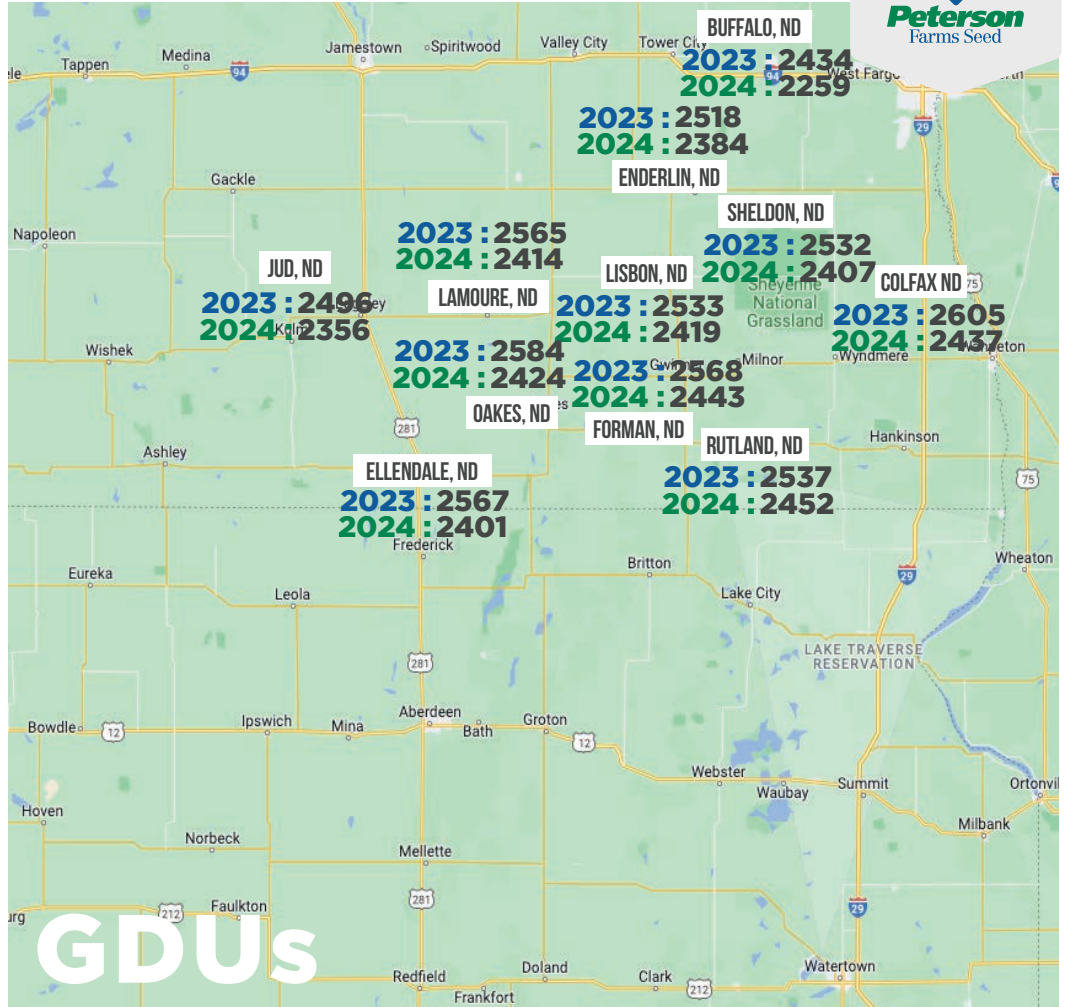
## WEEKLY NOTES

- A lot of soybeans are coming off with single-digit moisture. Yields are all over the place.
- Some corn is starting to come off with moisture in the low 20s and yields above average so far.



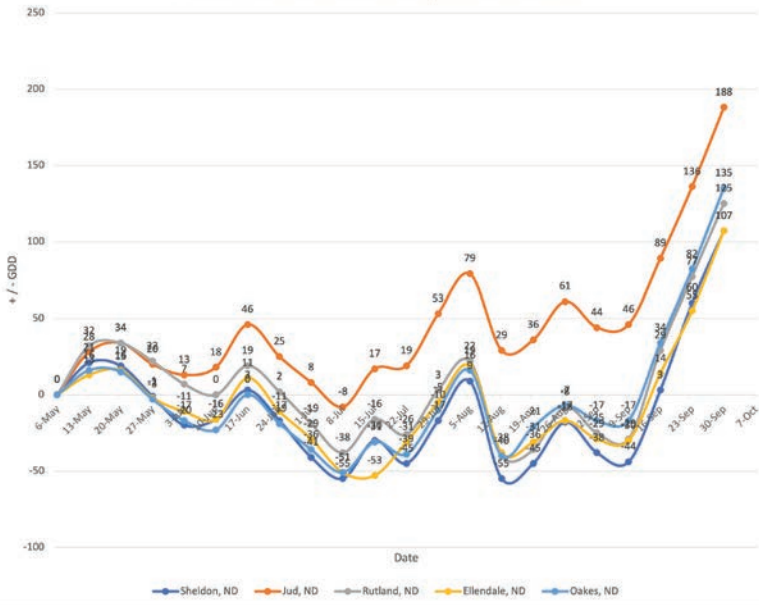
**JADE ALBRECHT**

701-893-8170  
[JADE@PETERSONFARMSSEED.COM](mailto:JADE@PETERSONFARMSSEED.COM)

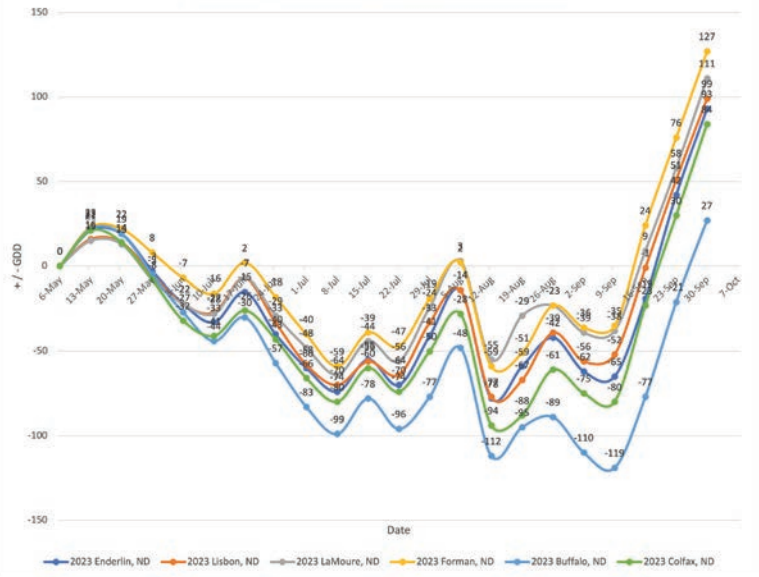


**GDU**s

2024 South East North Dakota Departure From Normal



2024 South East North Dakota Departure From Normal













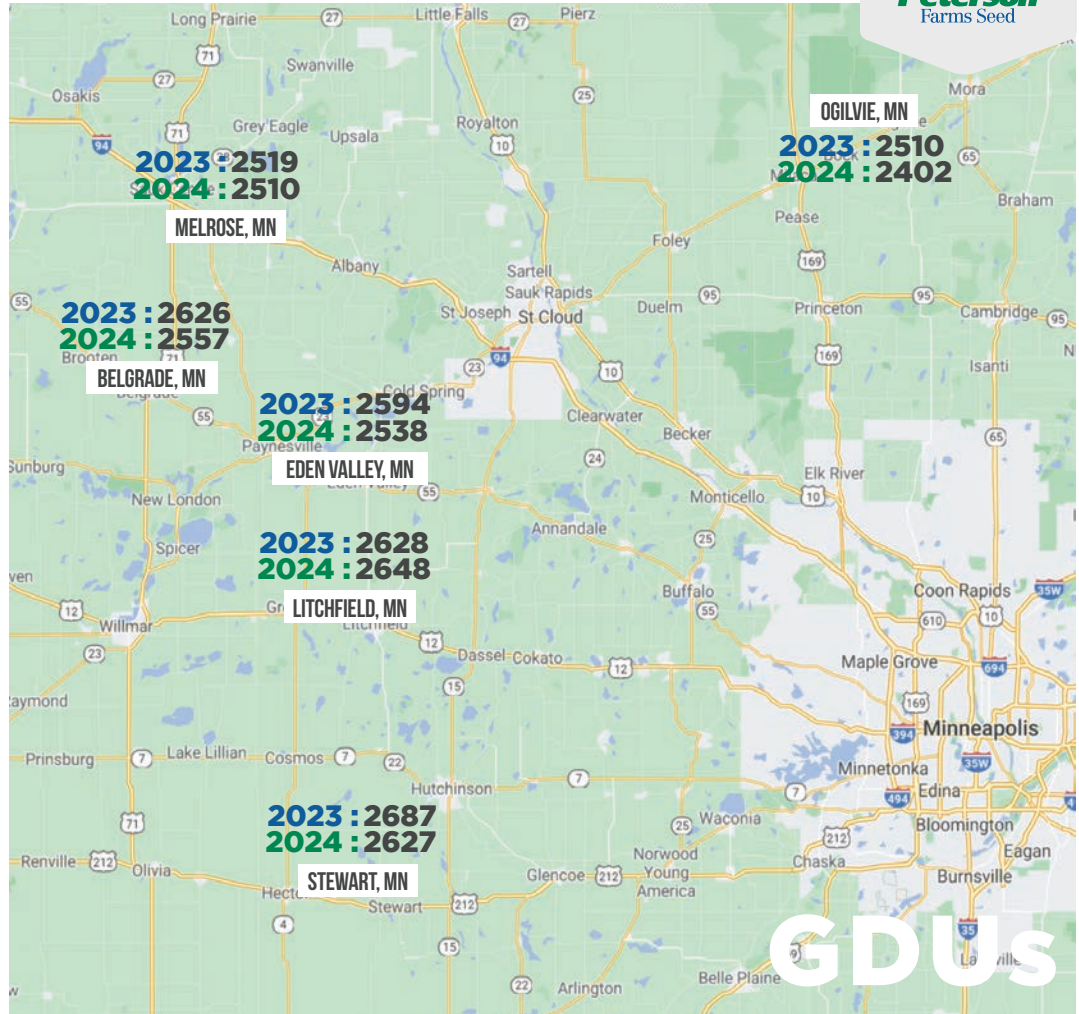
WEEK OF SEPT. 30, 2024

# TRAVIS WINTER EAST CENTRAL MN



## WEEKLY NOTES

- Beans are being combined across pretty much my whole territory. This will continue with the dry weather in the forecast.
- Corn has hit black layer and is drying down quickly! The southern portion of my territory has begun to combine corn.
- I'm guessing by the end of the week there will be quite a few combines going on corn across most of my territory.

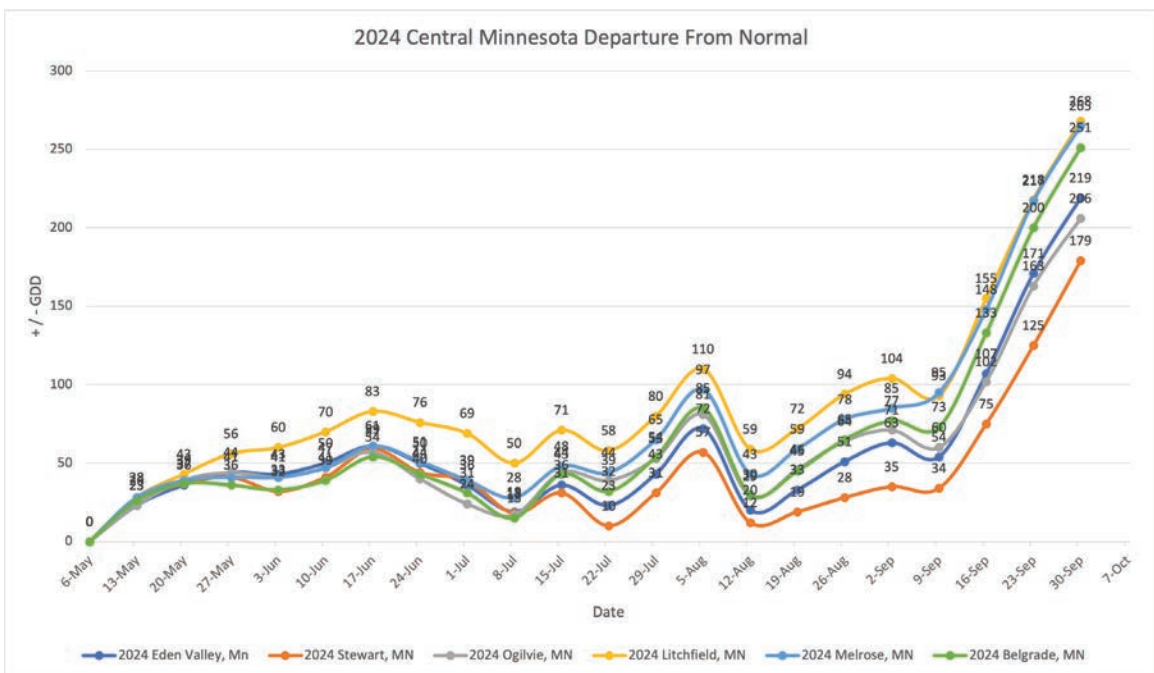


**TRAVIS WINTER**

320-290-4096

TRAVIS@PETERSONFARMSSEED.COM

**GDU**s



# PFS LOCATIONS



## WEEKLY NOTES

### HUNTER

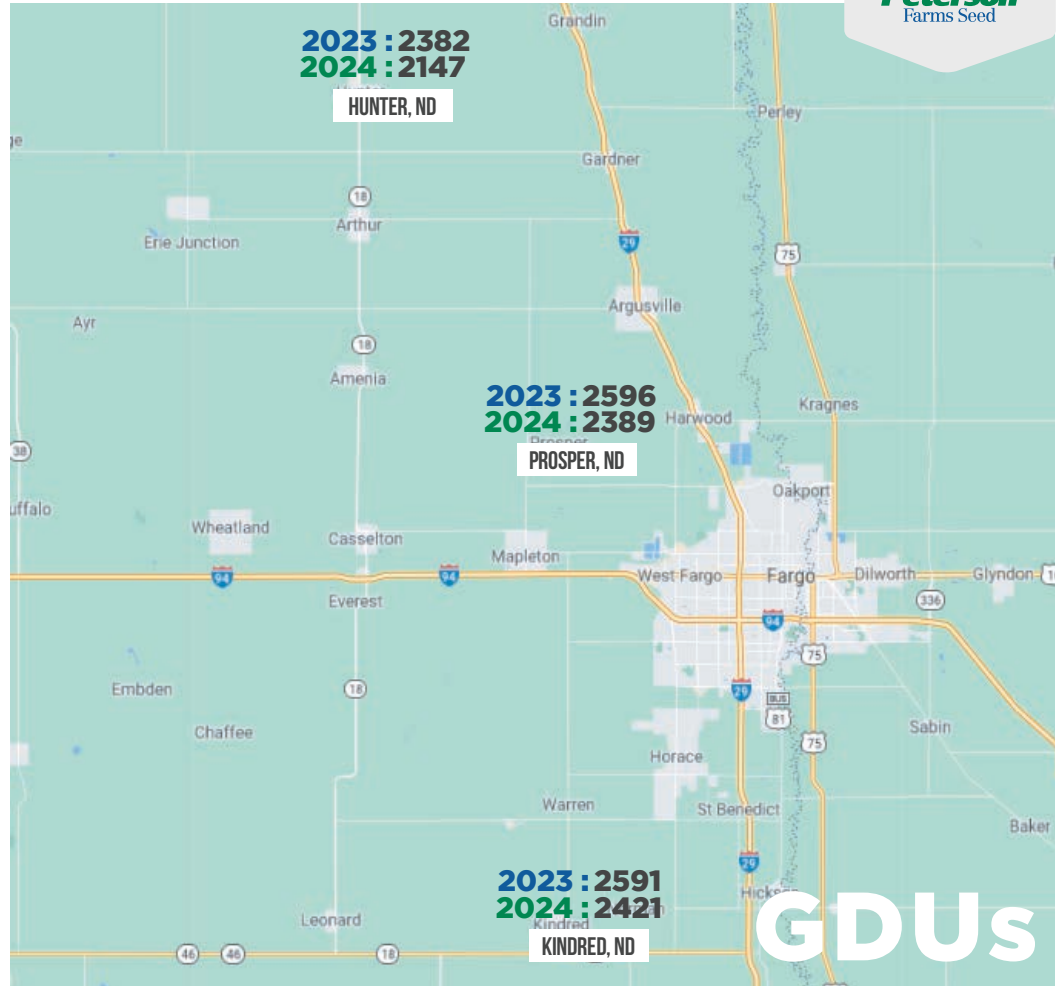
- Soybean harvest is in full swing with good yields so far. Fields are drying fast leading to soybeans getting too dry.
- Corn is turning fast with the heat and wind. Main focus is ensuring the crop stays standing. If needed, we could see some corn coming off before the end of soybean harvest.

### PROSPER

- Soybean harvest continues. Hearing good yields for the most part. The hot and windy weather is drying out fields, but that's out of our control.
- The weather should be pushing the corn along quickly. I expect corn coming off any time now depending on where guys are sitting at compared to soybeans.

### KINDRED

- Guys are starting to take off beans. It seems they are coming off more north of ND-46, which makes sense being south got a bit more rain this last spring holding off planting.
- Getting some SCN samples back and we are getting numbers just about everywhere. Nothing over 10,000 yet, but still pretty present.



GDU's

**KINDRED:** JADE ALBRECHT  
 CODY FULTS  
**PROSPER:** DREW RODEN  
**HUNTER:** KAELIN KYLLO  
 TROY WIEGANDT

701-282-7476

